



Guide Price
£545,000

Freehold

4x  2x  2x 

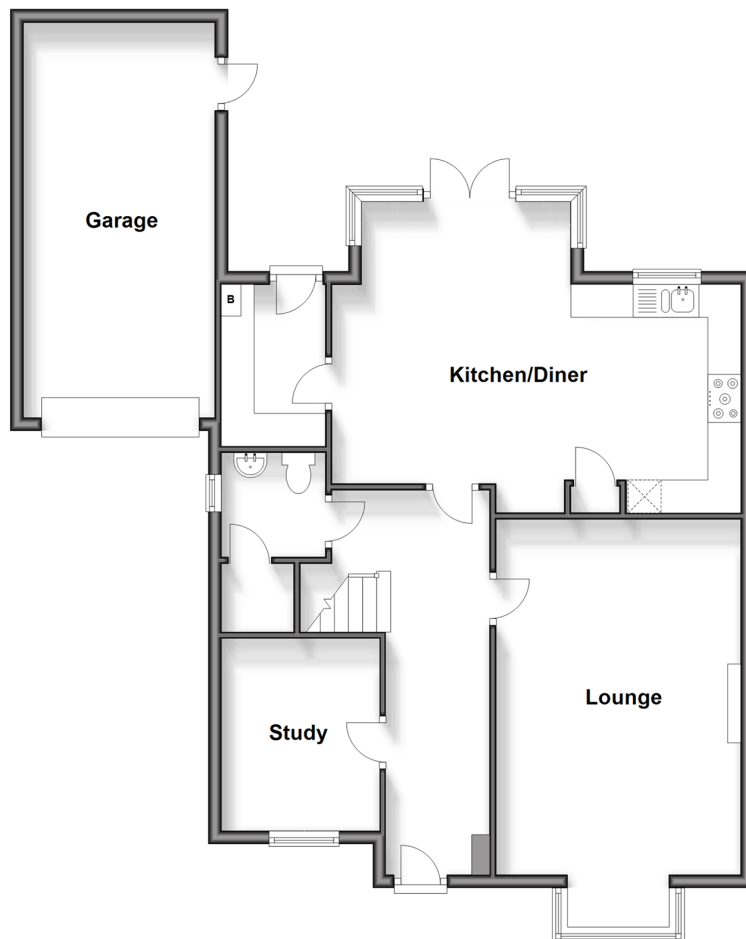
**Sackville Gardens,
Barnham, Bognor Regis,
West Sussex, PO22**

OVER 60?

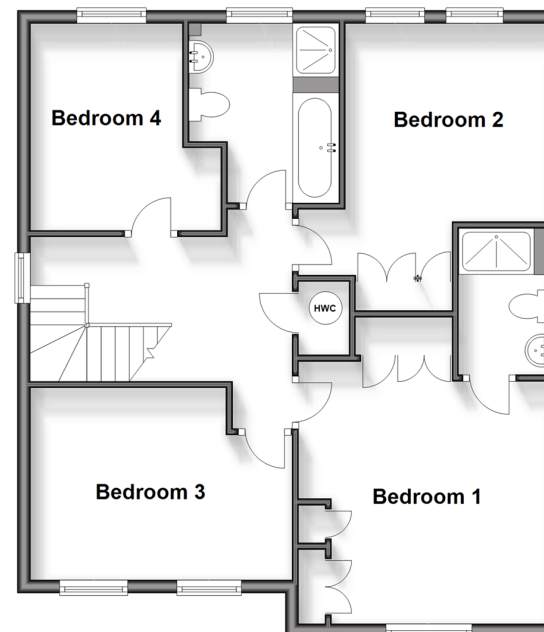
Secure this property
for up to **59% less!**

cubitt&west
Helping you move forwards

Ground Floor
Approx. 91.4 sq. metres (983.9 sq. feet)



First Floor
Approx. 69.4 sq. metres (746.9 sq. feet)



Accommodation

GROUND FLOOR

Entrance Hall

Study : 9'6 x 7'9 (2.90m x 2.36m)

Cloakroom

Utility Room : 8'4 x 5'4 (2.54m x 1.63m)

Kitchen/Diner: 20'4 x 15'6 (6.20m x 4.73m)

Lounge : 20'3 into bay x 12'3 (6.18m x 3.74m)

FIRST FLOOR

First Floor Landing

Bedroom 1: 12'11 x 12'4 (3.94m x 3.76m)

En-Suite Shower Room : 7'1 x 4'2 (2.16m x 1.27m)

Bedroom 2: 13'4 x 9'6 (4.07m x 2.90m)

Bedroom 3: 12'6 maximum (3.81m) narrowing to 9'0 minimum (2.75m) x 10'4 (3.15m)

Bedroom 4: 10'3 x 9'6 (3.13m x 2.90m)

Bathroom : 8'0 x 7'5 (2.44m x 2.26m)

OUTSIDE

Front & Rear Gardens

Garage & Off Road Parking

Summer House



Main features

- Spacious detached house with ample off road parking
- Close to excellent local primary & secondary schools
- Only a short walk from the shops, amenities & train station
- Stunning open planned kitchen/diner
- Useful study for home workers
- Light & airy accommodation throughout



Nearest Schools

Barnham Primary 0.3 miles, Eastergate CoFE Primary 0.5 miles, Aldingbourne Primary 0.8 miles, St Philip Howard Catholic High School, The 0.2 miles, Ormiston Six Villages Academy 0.7 miles, Slindon College 2.2 miles, Felpham Community College 2.9 miles, The Regis 3.4 miles



Transport Information

Train Stations: Barnham 0.4 miles, Ford 3.0 miles, Bognor Regis 3.6 miles



Address

Sackville Gardens, Barnham, Bognor Regis, West Sussex, PO22



Directions

For directions to this property please contact us.



cubitt&west
Helping you move forwards

Call Arundel Branch 01903 884420 ■ cubittandwest.co.uk



■ Legal advice should be taken to verify fixtures/fittings, planning, alterations and/or lease details ■ Appliances & services are untested, dimensions are approximate and floor plans are not to scale
■ Through a Homewise Home For Life Plan people aged 60+ can secure this property for up to 59% less, by purchasing a Lifetime Lease.



23217660/20241011/RH/DW