

OVER 60?

Secure this property
for up to **59% less!**

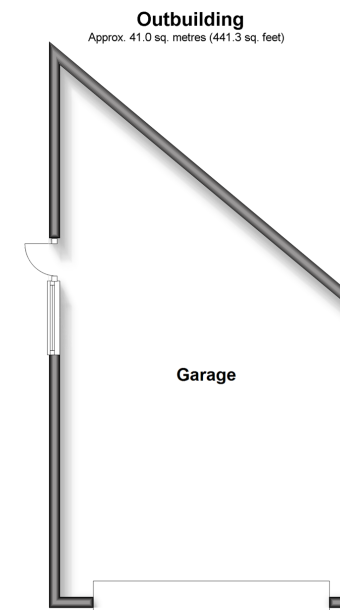
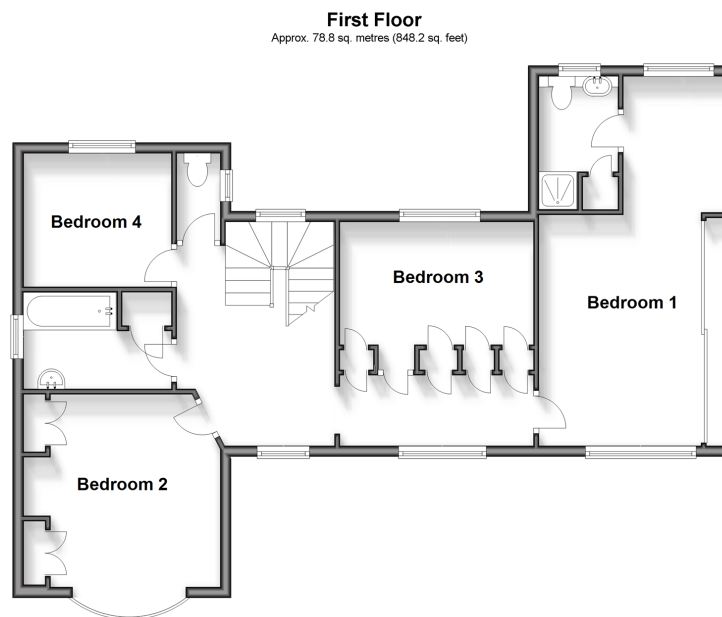


Price
£900,000
Freehold

4x  2x  2x 

Torton Hill Road, Arundel, West Sussex
BN18

cubitt&west
Helping you move forwards



Accommodation

GROUND FLOOR

Entrance Hall
 Drawing Room : 16'1 x 12'2 (4.91m x 3.71m)
 Study : 12'11 x 12'0 (3.94m x 3.66m)
 Ground floor Cloakroom
 Kitchen/ Breakfast Room : 14'8 x 14'8 (4.47m x 4.47m)
 Lean To
 Lounge : 22'0 x 11'6 (6.71m x 3.51m)
 Dining Area: 14'1 x 11'10 (4.30m x 3.61m)

FIRST FLOOR

First Floor Landing
 Bedroom 1: 14'3 x 9'7 up to fitted wardrobes (4.35m x 2.92m)
 En Suite Shower Room : 7'9 x 4'10 (2.36m x 1.47m)
 Dressing Area: 7'9 x 6'6 (2.36m x 1.98m)
 Bedroom 2: 14'0 into bay x 10'10 (4.27m x 3.30m)

Bedroom 3: 11'10 x 7'11 (3.61m x 2.41m)
 Bedroom 4: 8'11 x 8'5 (2.72m x 2.57m)

OUTSIDE

Double Garage/ Workshop
 Front Garden
 Walled Rear Garden
 Driveway



Main features

- Substantial detached house in highly desirable road with huge potential to modernise/ remodel
- Extensive parking for multiple cars
- Significant abundant space for entertaining or working from home, meeting all flexible needs
- Master bedroom boasts en suite & dressing area
- Walled sunny garden that's not overlooked
- Chain free



Nearest Schools

Primary Schools: Arundel CofE Primary 0.3 miles, St Philip's Catholic Primary, Arundel 0.7 miles
Secondary Schools: St Philip Howard Catholic High School, 6.5 miles, Bishop Luffa CofE School 11.8 miles



Transport Information

Train Stations: Arundel 1.4 miles, Ford 1.8 miles, Barnham 3.4 miles



Address

Torton Hill Road, Arundel, West Sussex BN18



Directions

For directions to this property please contact us.



cubitt&west
Helping you move forwards

Call Arundel Branch 01903 884420 ■ cubittandwest.co.uk



■ Legal advice should be taken to verify fixtures/fittings, planning, alterations and/or lease details ■ Appliances & services are untested, dimensions are approximate and floor plans are not to scale
■ Through a Homewise Home For Life Plan people aged 60+ can secure this property for up to 59% less, by purchasing a Lifetime Lease.



23216718/20240902/DW/DW