



**Price**  
**£750,000**

**Share of  
Freehold**

3x  2x  2x 

**The Old Salthouse, River  
Road, Arundel, West  
Sussex, BN18**

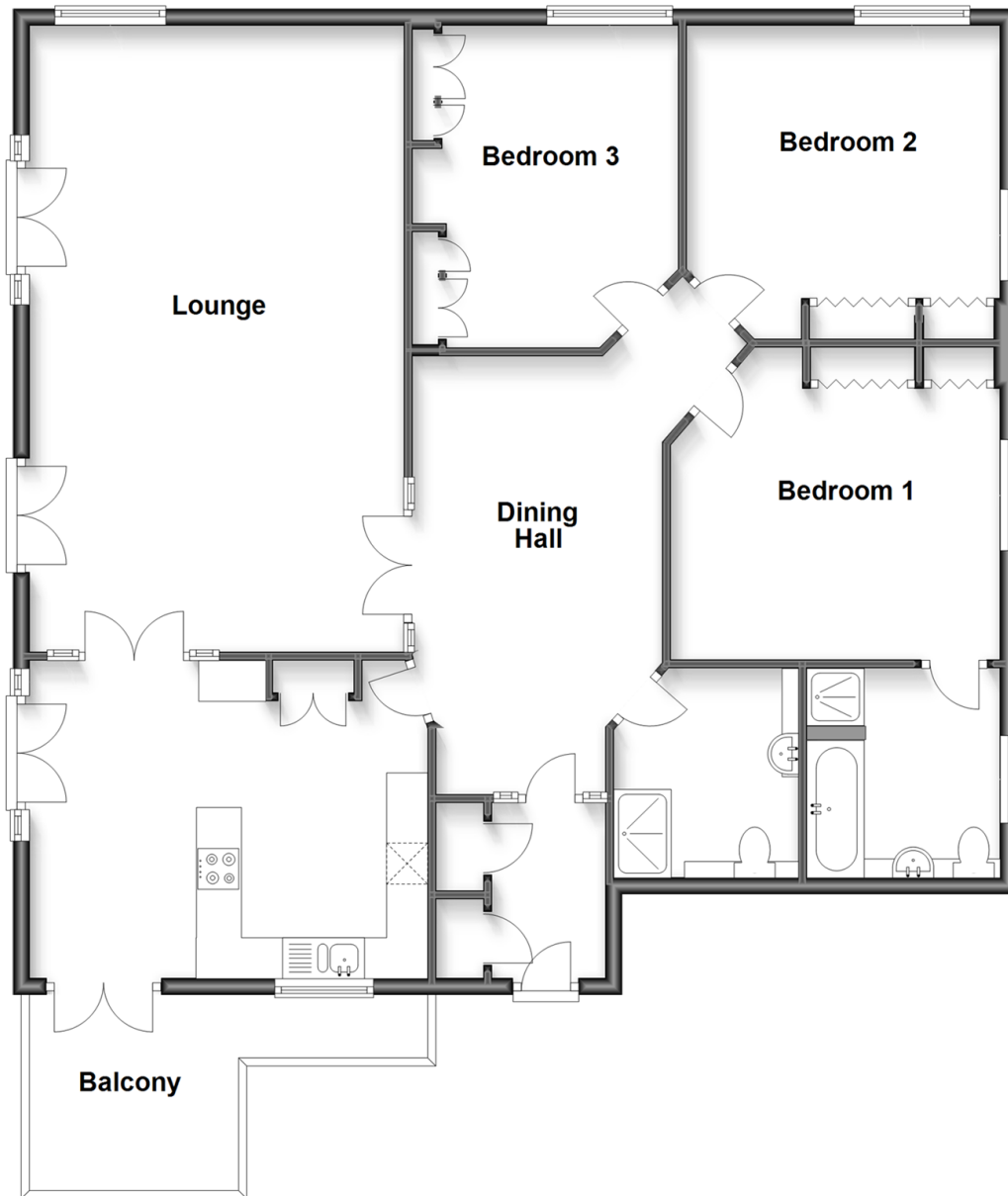
**OVER 60?**

Secure this property  
for up to **59% less!**

**cubitt & west**  
Helping you move forwards

## First Floor

Approx. 132.1 sq. metres (1422.1 sq. feet)



## Accommodation

### FIRST FLOOR

Entrance Hall

Dining Hall

Kitchen/ Breakfast Room : 16'4 x 12'9  
(4.98m x 3.89m)

Balcony

Lounge : 25'2 x 14'10 (7.68m x 4.52m)

Shower Room : 8'3 x 6'10 (2.52m x 2.08m)

Bedroom 1: 13'3 x 12'1 up to fitted  
wardrobes (4.04m x 3.69m)

En Suite Bathroom and Shower : 8'5 x 7'6  
(2.57m x 2.29m)

Bedroom 2: 11'7 up to fitted wardrobes x  
11'0 (3.53m x 3.36m)

Bedroom 3: 12'10 x 9'4 up to fitted  
wardrobes (3.91m x 2.85m)

### OUTSIDE

Allocated Parking





## Main features

- Grade II listed riverside apartment with breathtaking panoramic views
- Warehouse style accommodation with exceptional living space flooded with light
- Generous riverside balcony
- Just a moment's walk from the hustle and bustle of the market town
- Allocated parking directly outside
- Share of freehold and well maintained



### Nearest Schools

Primary Schools: St Philip's Catholic Primary, Arundel 0.7 miles, Arundel CofE Primary 1.1 miles  
Secondary Schools: Cornfield School, Littlehampton 4.3 miles, Littlehampton Community School 5.0 miles, St Philip Howard Catholic High School 6.7 miles



### Transport Information

Train Stations: Arundel 1.4 miles, Ford 2.3 miles, Barnham 4.0 miles



### Address

The Old Salthouse, River Road, Arundel, West Sussex, BN18



### Directions

For directions to this property please contact us.





**cubitt&west**  
Helping you move forwards

Call Arundel Branch 01903 884420 ■ [cubittandwest.co.uk](https://www.cubittandwest.co.uk)



- If buying to let, the energy rating will need to be improved to at least 'E' rating before you can let the property
- Appliances & services are untested, dimensions are approximate and floor plans are not to scale

- Legal advice should be taken to verify fixtures/fittings, planning, alterations and/or lease details
- Through a Homewise Home For Life Plan people aged 60+ can secure this property for up to 59% less, by purchasing a Lifetime Lease.