



Price
£255,000

Freehold

3x  1x  1x 

**Miles Close, Ford, West
Sussex BN18**

OVER 60?

Secure this property
for up to **59% less!**

cubitt & west
Helping you move forwards



Main features

- Located in desirable end of cul-de-sac position
- Excellent potential to extend & improve (subject to consents)
- Garage en-bloc & potential for off road parking (subject to consents)
- Conservatory looks out onto garden
- Large living space - ideal for entertaining

Accommodation

GROUND FLOOR

Entrance Hall

Cloakroom

Kitchen : 9'6 x 9'3 (2.90m x 2.82m)

Lounge: 15'8 minimum x 12'4 (4.78m x 3.76m)

Conservatory : 14'11 x 6'4 (4.55m x 1.93m)

FIRST FLOOR

Landing

Bedroom 1: 12'0 x 9'1 (3.66m x 2.77m)

Bedroom 2: 11'4 x 9'2 (3.46m x 2.80m)

Bedroom 3: 9'9 x 6'4 (2.97m x 1.93m)

Bathroom : 6'4 x 6'1 (1.93m x 1.86m)

OUTSIDE

Front Garden

Rear Garden

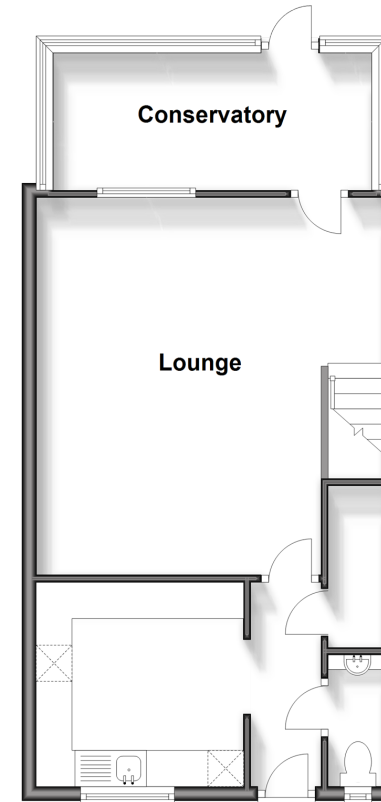
Garage En-Bloc

Call Arundel - 01903 884420 ■ cubittandwest.co.uk

- Legal advice should be taken to verify fixtures/fittings, planning, alterations and/or lease details
- Appliances & services are untested, dimensions are approximate and floor plans are not to scale
- Through a Homewise Home For Life Plan people aged 60+ can secure this property for up to 59% less, by purchasing a Lifetime Lease.

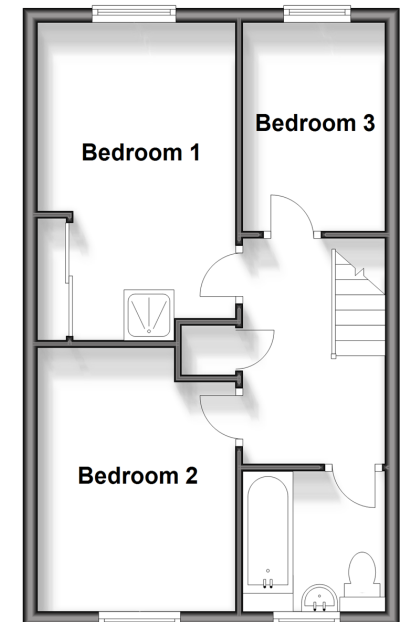
Ground Floor

Approx. 48.4 sq. metres (521.2 sq. feet)



First Floor

Approx. 39.5 sq. metres (425.5 sq. feet)



23217719/20240502/RH/DW