



Guide Price
£340,000

Freehold

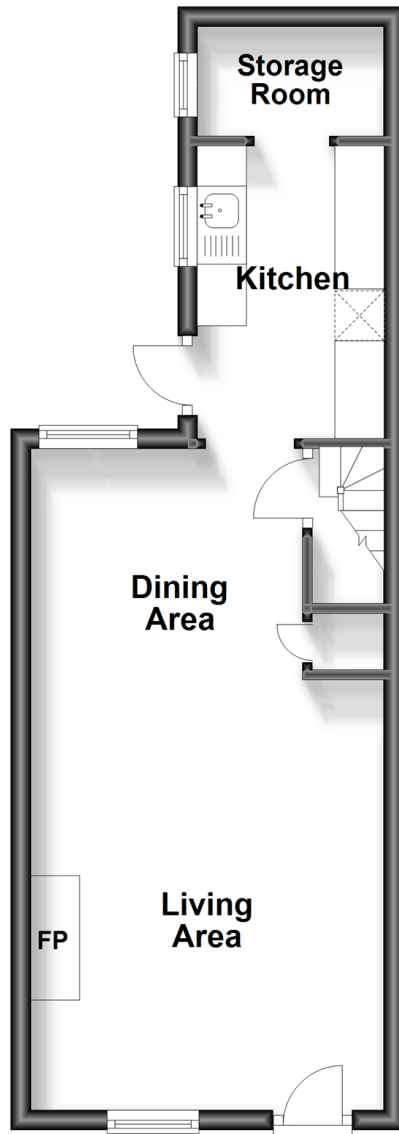
2x  1x  1x 

**King Street, Arundel,
West Sussex, BN18**

cubitt & west
Helping you move forwards

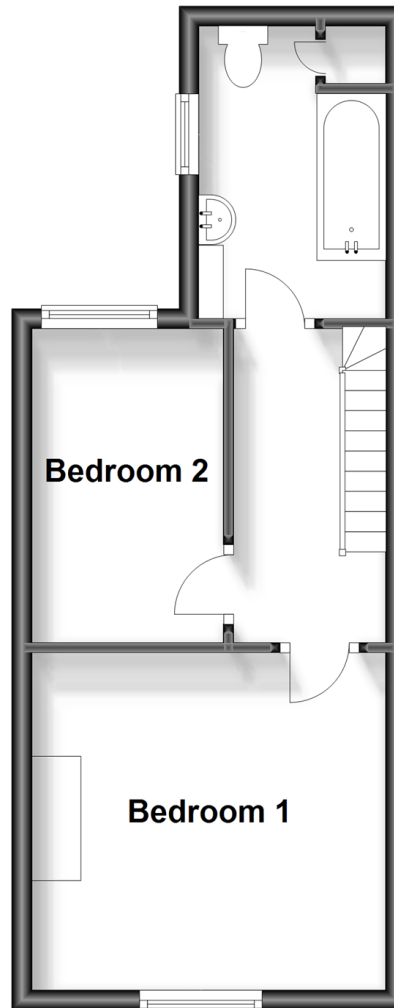
Ground Floor

Approx. 32.0 sq. metres (344.1 sq. feet)



First Floor

Approx. 29.7 sq. metres (319.5 sq. feet)



Accommodation

GROUND FLOOR

Living Area: 14'4 x 11'11 (4.37m x 3.63m)

Dining Area: 10'3 x 9'3 (3.13m x 2.82m)

Kitchen: 9'6 x 6'2 (2.90m x 1.88m)

Storage Room : 4'8 x 3'7 (1.42m x 1.09m)

FIRST FLOOR

First Floor Landing

Bedroom 1: 12'2 x 11'0 (3.71m x 3.36m)

Bedroom 2: 10'11 x 6'5 (3.33m x 1.96m)

Bathroom: 9'10 x 6'1 (3.00m x 1.86m)

OUTSIDE

Courtyard Garden

Raised Garden



Main features

- Charming period cottage in heart of historic town
- Character features such brick fireplace and sash windows
- Storage room off of Kitchen
- Courtyard garden ideal for alfresco dining
- Located short walk from award winning restaurants, boutiques and grocery shops



Nearest Schools

Primary Schools: St Philip's Catholic Primary, Arundel 0.1 miles, Arundel CofE Primary 0.5 miles, Flora McDonald Junior School 2.6 miles

Secondary Schools: Cornfield School, Littlehampton 2.5



Transport Information

Train Stations: Arundel 0.7 miles, Ford 1.8 miles, Amberley 2.9 miles



Address

King Street, Arundel, West Sussex, BN18



Directions

For directions to this property please contact us.



cubitt&west
Helping you move forwards

Call Arundel Branch 01903 884420 ■ cubittandwest.co.uk



- If buying to let, the energy rating will need to be improved to at least 'E' rating before you can let the property
- Appliances & services are untested, dimensions are approximate and floor plans are not to scale

■ Legal advice should be taken to verify fixtures/fittings, planning, alterations and/or lease details

EPC RATING	CURRENT:	POTENTIAL:
	F(2S)	B(31)

23217612/20240606/AR/DW