

TRADING PLACES ●

Asking Price £400,000
Kings Road, Old Trafford, M16 0HF



 **3**
Bedrooms

 **1**
Bathroom

133, Barton Road, Stretford, Manchester, M32 8DN |
admin@tradingplaces.co.uk

01618659220





Trading Places Spacious Three-Bedroom Semi-Detached Home on a Corner Plot

This beautifully presented three-bedroom semi-detached home offers a superb blend of space, comfort, and convenience. Ideally suited for families or investors, this property boasts a wealth of desirable features and is set on a generous corner plot, providing ample outdoor space.

Stepping inside, you are greeted by bright and airy interiors that exude warmth and versatility. The home benefits from two well-proportioned reception rooms, perfect for both relaxed family living and entertaining guests. The kitchen is thoughtfully designed, offering ample storage and workspace to cater to all culinary needs.

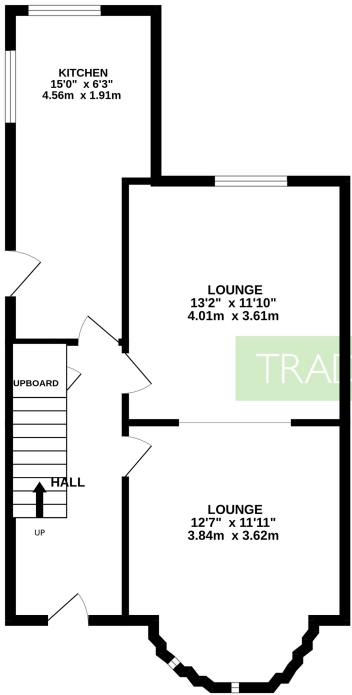
Upstairs, three generously sized bedrooms provide comfortable accommodation, while the family bathroom is well-appointed to serve the household. Throughout the property, gas central heating and double glazing ensure year-round comfort and efficiency.

Externally, the wraparound gardens to the front, side, and rear create an inviting outdoor space, ideal for families, gardening enthusiasts, or those who simply enjoy spending time outdoors. The property also benefits from off-road parking to the rear, along with a garage that offers additional storage or vehicle space.

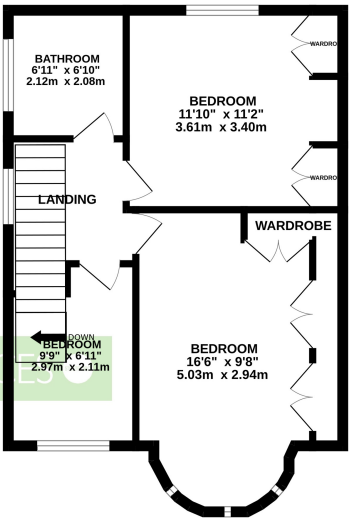
Conveniently situated close to local amenities, reputable schools, and excellent transport links, this home presents a fantastic opportunity for those seeking a well-connected yet peaceful residential setting.

Early internal viewing is highly recommended to fully appreciate the potential and charm of this delightful home. **Contact us today to arrange a viewing!**

GROUND FLOOR
537 sq.ft. (49.9 sq.m.) approx.



1ST FLOOR
456 sq.ft. (42.4 sq.m.) approx.



TRADING PLACES

TOTAL FLOOR AREA: 993 sq.ft. (92.3 sq.m.) approx.

Whilst every attempt has been made to ensure the accuracy of the floorplan contained here, measurements of doors, windows, rooms and any other items are approximate and no responsibility is taken for any error, omission or mis-statement. This plan is for illustrative purposes only and should be used as such by any prospective purchaser. The services, systems and appliances shown have not been tested and no guarantee as to their operability or efficiency can be given.
Made with Metropix C2025

