

TRADING PLACES



Atholl Avenue, Stretford,
M32 9LZ

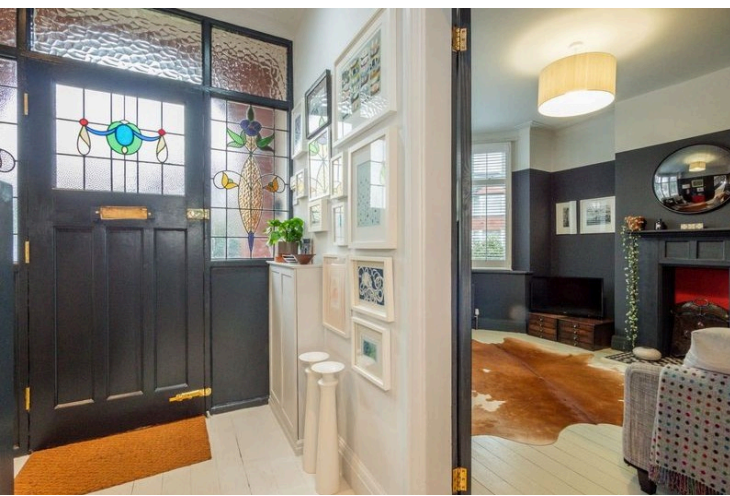
Asking Price
£375,000

 3 Bedrooms

 1 Bathroom

 2 Receptions

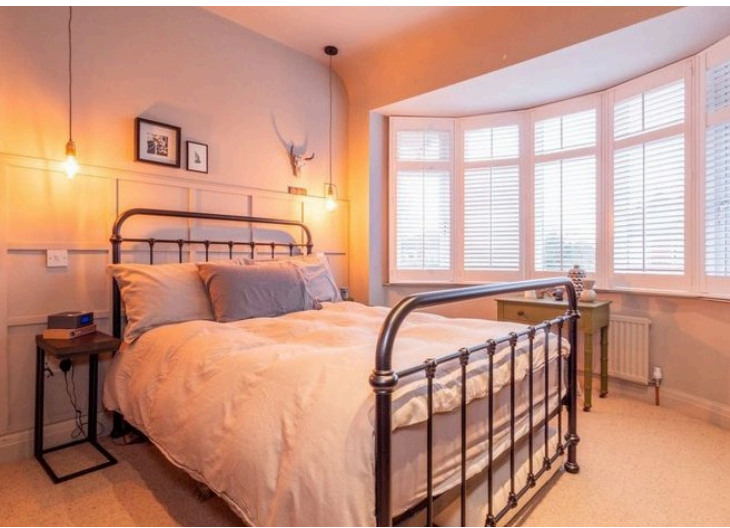
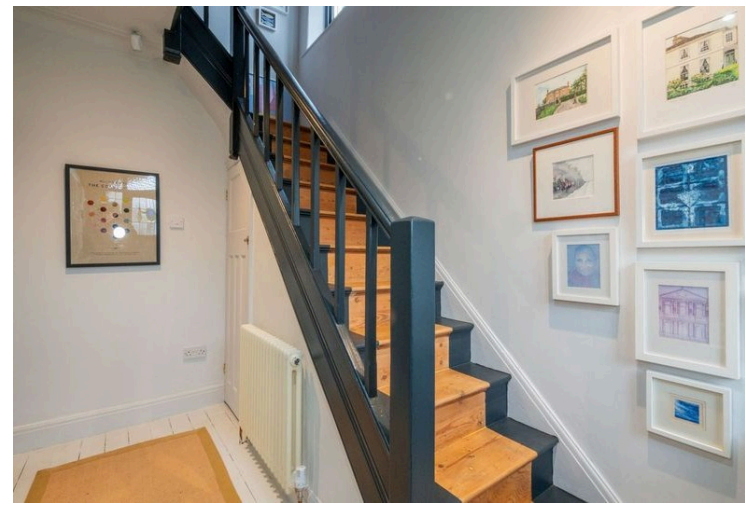
Council Tax Banding : C

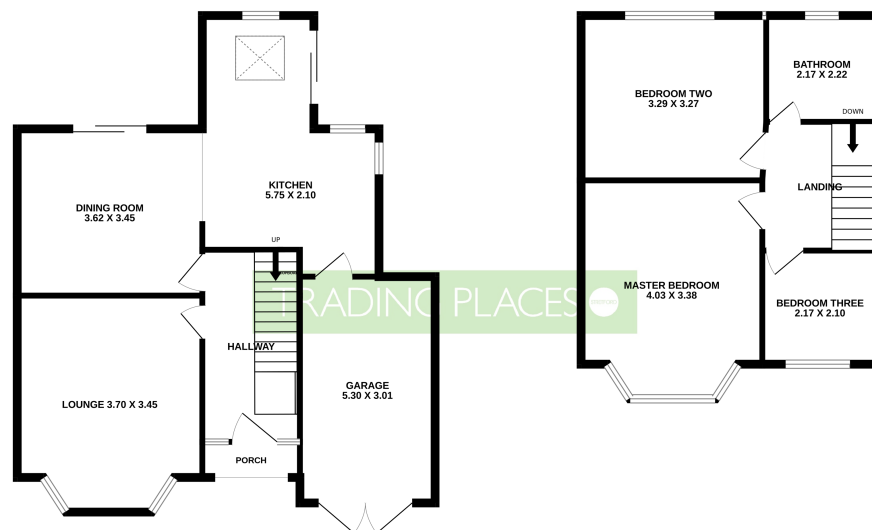


Atholl Avenue, Stretford, M32 9LZ

This beautifully extended 3-bedroom semi-detached house in the sought-after area of Stretford (M32) is an exceptional find, offering a perfect blend of modern living with period charm. Immaculately presented to the highest specifications, this stunning property boasts spacious, light-filled interiors and an array of high-end features, making it the ideal home for those seeking quality and style. As you step inside, you'll be greeted by a striking hallway with elegant stained-glass windows that add a touch of character and warmth. The generous front reception room provides a comfortable space to unwind, while the true highlight of the home is the expansive open-plan kitchen, dining, and utility area. This space is perfect for modern living and entertaining, with plenty of room for a large dining table and all the conveniences you could wish for, including top-of-the-line sleek finishes. The kitchen opens onto the rear garden via sliding uPVC doors, flooding the space with natural light and providing a seamless flow between indoor and outdoor living. The private rear garden offers a peaceful retreat, ideal for enjoying sunny days and alfresco dining. Upstairs, the property boasts three well-proportioned bedrooms, each designed with comfort in mind. The master bedroom benefits from ample space for storage and the versatility to suit a variety of needs, while the other two bedrooms are perfect for children, guests or a home office. The family bathroom is equally impressive, featuring a stunning waterfall shower for the ultimate relaxation experience.







GAIRLOCH AVENUE, STRETTFORD, MANCHESTER, M32 9LL

Whilst every attempt has been made to ensure the accuracy of the floorplan contained here, measurements of doors, windows, rooms and any other items are approximate and no responsibility is taken for any error, omission or mis-statement. This plan is for illustrative purposes only and should be used as such by any prospective purchaser. The services, systems and appliances shown have not been tested and no guarantee as to their operability or efficiency can be given.
Made with Metrepro ©2025



Features

- Kitchen-Diner
- Period Features
- Close to Amenities



TRADING PLACES

Tel: 01618659220

Web: tradingplaces.co.uk

Email: admin@tradingplaces.co.uk

133 Barton Road, Stretford, Manchester M32 8DN

Disclaimer* (While every effort has been made to ensure the accuracy and completeness of the information, Trading Places and the seller makes no representations or warranties of any kind, express or implied, about the completeness, accuracy, reliability, or suitability of the information contained in this advertisement for any purpose and any reliance you place on such information is strictly at your own risk. All information should be confirmed by your legal representative).