

TRADING PLACES ●

Asking Price £425,000
Lime Road, Stretford, M32 8HX



 **3**
Bedrooms

 **1**
Bathroom

133, Barton Road, Stretford, Manchester, M32 8DN |
admin@tradingplaces.co.uk

01618659220





Spacious Three-Bedroom Home with Loft Rooms & Large Garden – Sought-After Stretford Location

Located in a highly sought-after area of Stretford, this generously sized three-bedroom home offers fantastic potential for modernisation while retaining charming period features. Ideally positioned close to the Metrolink and Stretford Grammar School, this property is perfect for families and commuters alike.

Upon entering, you are welcomed by a spacious hallway leading to two well-proportioned reception rooms, both benefiting from high ceilings, decorative coving, and large windows that flood the space with natural light. The kitchen, located at the rear, offers direct access to the expansive garden, which is mainly laid to lawn—ideal for families or those who enjoy outdoor space.

The first floor comprises three bedrooms—two generous doubles and a well-sized single—alongside a family bathroom and a separate WC for added convenience. The second bedroom also features built-in storage space.

A staircase leads to the top floor, where two versatile loft rooms with Velux windows provide additional living space, perfect for a home office, playroom, or guest accommodation.

Externally, the property benefits from a large rear garden, while the front driveway offers off-road parking.

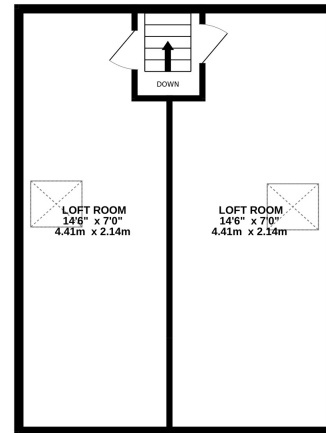
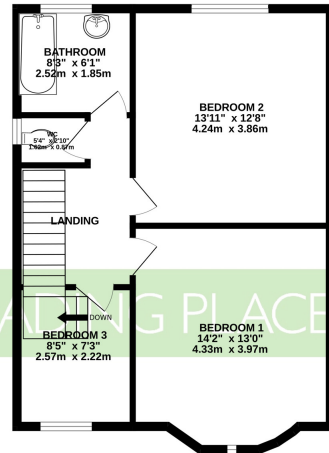
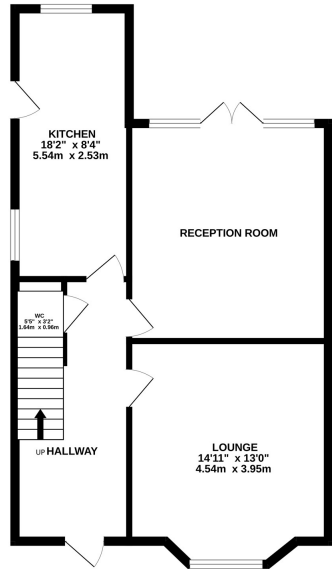
With its spacious layout, high ceilings, and period charm, this home presents an exciting opportunity to update and personalise to suit modern tastes. Whether you're looking to create a contemporary family home or retain its traditional character, this property offers endless potential in a fantastic location.

Disclaimer * (While every effort has been made to ensure the accuracy and completeness of the information, Trading Places and the seller makes no representations or warranties of any kind, express or implied, about the completeness, accuracy, reliability, or suitability of the information contained in this advertisement for any purpose and any reliance you place on such information is strictly at your own risk. All information should be confirmed by your Legal representative) *

GROUND FLOOR

1ST FLOOR

2ND FLOOR



Whilst every attempt has been made to ensure the accuracy of the floorplan contained here, measurements of doors, windows, rooms and any other items are approximate and no responsibility is taken for any error, omission or mis-statement. This plan is for illustrative purposes only and should be used as such by any prospective purchaser. The services, systems and appliances shown have not been tested and no guarantee as to their operability or efficiency can be given.
Made with Metropix ©2025