



 3
Bedrooms

 1
Bathroom





****No chain****

This spacious DETACHED house is ideally located in close proximity to the Manchester United ground. It offers convenient access to major bus routes leading to the City Centre and is just a short walk away from the Metro Link Station. The property boasts an entrance hallway, a generously proportioned lounge, a front reception room, a fully fitted kitchen, a handy storage cupboard, three spacious double bedrooms, and a family-friendly bathroom. This home is a perfect project for any growing family wanting to place 'their stamp' on it.

Property additional info

ENTRANCE:

Wooden front door, doors to reception rooms, conving / pictures rails.

RECEPTION ROOM 1 4.55 x 3.52:

Bay window, coving, electric heater.

RECEPTION ROOM 2 3.96 x 3.50:

Double glazed window,access to a storage cupboard, electric heater.

KITCHEN 5.23 x 1.76:

Two windows, door to rear courtyard.

LANDING :

Doors to three bedrooms and bathroom, loft hatch.

BEDROOM ONE 4.40 x 3.52:

Bay window, original fireplace, stripped exposed floorboards, access to storage.

BEDROOM TWO 3.94 x 2.90:

Window, stripped exposed floorboards, access to storage.

BEDROOM THREE 3.08 x 3.44:

Window, stripped exposed floorboards.

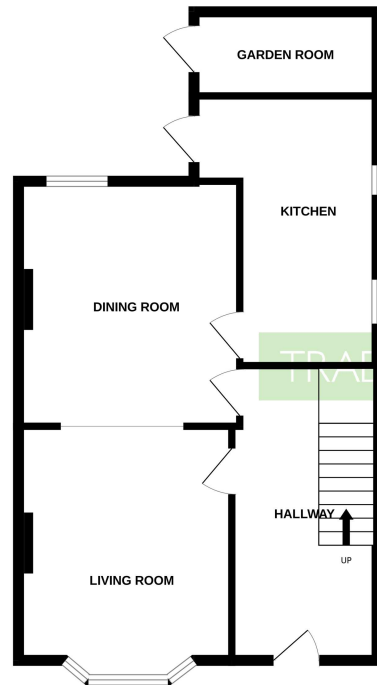
BATHROOM:

Bath, WC and sink, window.

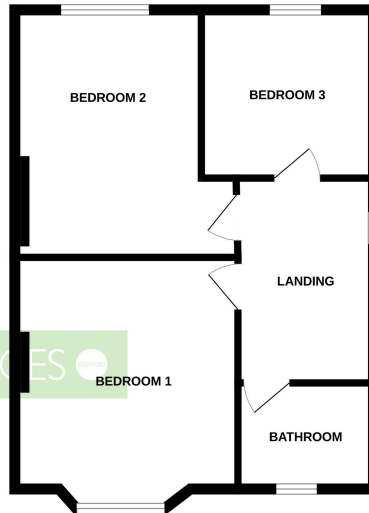
COURTYARD:

Privately enclosed and gated.

GROUND FLOOR



1ST FLOOR



Whilst every attempt has been made to ensure the accuracy of the floorplan contained here, measurements of doors, windows, rooms and any other items are approximate and no responsibility is taken for any error, omission or mis-statement. This plan is for illustrative purposes only and should be used as such by any prospective purchaser. The services, systems and appliances shown have not been tested and no guarantee as to their operability or efficiency can be given.
Made with Metropix ©2024