



2

Bedrooms



1

Bathroom





Trading Place welcome this delightful two-bedroom terraced property located on Bowness Street in Stretford. This charming home is perfect for first-time buyers, small families, or those looking to downsize.

As you step inside, you are greeted by two spacious reception rooms, each offering a warm and inviting atmosphere. The rear reception room features elegant French doors that open directly onto the courtyard, seamlessly connecting indoor and outdoor living. The well-appointed kitchen is conveniently located off the reception area, boasting integrated appliances including an oven and gas hob.

Upstairs, the master bedroom features two large windows that flood the room with natural light. An original fireplace adds a touch of character, making this a serene and cozy retreat. The second bedroom is versatile, ideal for guests, children, or a home office. The light and spacious bathroom completes the upper level, featuring a modern three-piece suite.

Outside, the east-facing courtyard is a suntrap. The decked seating area is ideal for outdoor dining and entertaining. This property combines traditional charm with modern conveniences, offering comfortable and stylish living in a prime location. Don't miss the opportunity to view this property!

Council Tax - B

EPC - TBC

Tenure - TBC

Utilities - TBC

**\*Disclaimer \*** (While every effort has been made to ensure the accuracy and completeness of the information, Trading Places and the seller makes no representations or warranties of any kind, express or implied, about the completeness, accuracy, reliability or suitability of the information contained in this advertisement for any purpose and any reliance you place on such information is strictly at your own risk. All information should be confirmed by your Legal representative) \*

### **Entrance**

Wood front door. Laminate flooring and radiator. Original coving.

### **Reception Room 1**

Double-glazed half-bay window. Open fireplace with tiled hearth. Coving and picture rails. Radiator.

### **Reception Room 2**

Storage cupboard under the stairs. Tiled hearth. French doors leading to the garden. Radiator.

### **Kitchen**

White wall and base units with black countertop. Integrated gas hob, extractor fan and oven. Double-glazed window at side and uPVC door to garden. Radiator.

### **Landing**

Loft hatch and access to bedrooms and bathroom.

### **Bedroom 1**

Two double-glazed windows at the front of the property. Original fireplace. Radiator.

### **Bedroom 2**

Double-glazed window at the rear. Original wood flooring. Radiator.

### **Bathroom**

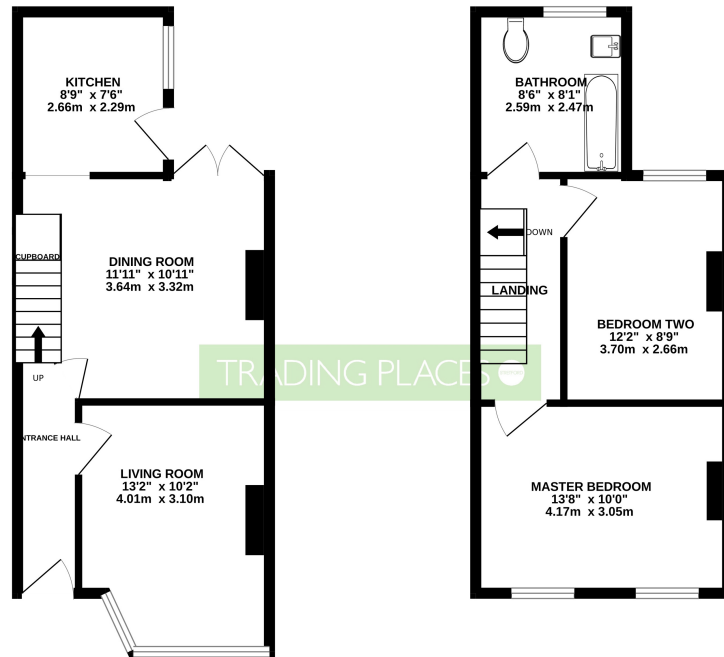
Panel bath with overhead shower and detachable hose. Pedestal sink with a mixer tap and WC. Towel radiator. Spotlights.

### **Courtyard**

East facing courtyard with a pebbled pathway leading to gate at the rear. Wooden decking seating area.

GROUND FLOOR

1ST FLOOR



15 BOWNESS STREET, STRETTFORD, MANCHESTER, M32 0EA

Whilst every attempt has been made to ensure the accuracy of the footprint contained here, measurements of doors, windows, rooms and any other items are approximate and no responsibility is taken for any error, omission or mis-statement. This plan is for illustrative purposes only and should be used as such by any prospective purchaser. The services, systems and appliances shown have not been tested and no guarantee as to their operability or efficiency can be given.  
Made with Merge3D ©2022

