



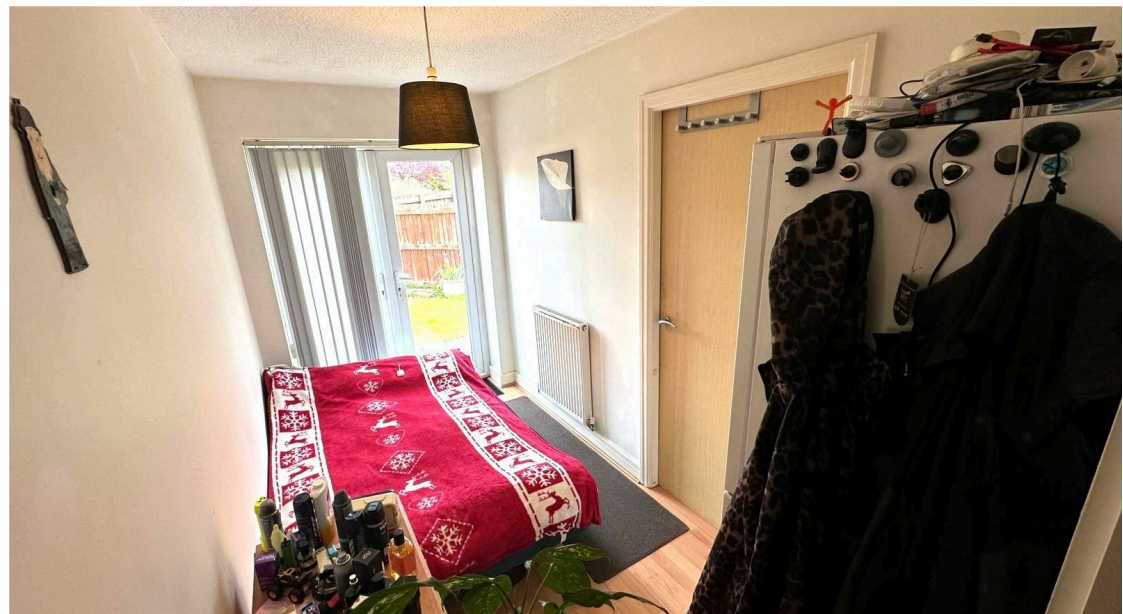
 2

Bedrooms

 2

Bathrooms











**Livingroom** *3.63m x 3.65m*

Laminate flooring. Double-glazed window to the front. Radiators. Staircase.

**WC** *1.68m x 0.88m*

Vinyl flooring. Pedestal handwash basin. WC.

**Dining room**

Laminate floor. French uPVC door to garden. Door to the kitchen. Radiator.

**Kitchen** *3.32m x 1.74m*

Radiator. Vinyl floor Double-glazed window to the rear. Tiled backsplash. Stainless steel sink. 4-ring gas hob and oven. Space for appliances. Wall and base units.

**Landing**

Storage.

**Bedroom 1** *3.35m x 3.63m*

Double-glazed window to the front. Radiator. Storage cupboard.

**Bedroom 2** *3.35m x 2.03m*

Radiator. double-glazed window to the rear. Storage cupboard. Loft access.

**Bathroom** *1.51m x 2.31m*

Double-glazed frosted window to the rear. Tiled walls. Pedestal hand wash basin. WC. Bath with overhead shower. Radiator. Spotlights.

**Garden**

Paved and lawn. Fully fenced at the back.

# TRADING PLACES

Asking Price £210,000  
Lambourne Close, Manchester, M22 1HS

