





5, Thetford Close, Tytherington, SK10 2TP

This beautiful 3-bedroom furnished detached home in the sought-after Tytherington Links Estate offers comfort and convenience. Just a short walk to local amenities and 20 minutes from Macclesfield town centre and train station, it's perfect for professionals, families, or anyone seeking a well-located home.

Key Features:

- Spacious & Stylish Living – Open-plan lounge with a cosy log burner, leading through double doors into the kitchen-dining room and a bright conservatory.
- Three Well-Proportioned Bedrooms – A master bedroom with wall-to-wall wardrobes, a double bedroom, and a large single bedroom.
- Outdoor Space – A private back garden with a shed, plus a lovely front garden with parking for two cars and a single garage.
- Prime Location – Walkable access to shops, schools, parks, and excellent transport links.
- Pet Friendly

Available Start of May and offered fully furnished. A pet will be accepted. EPC D. Tax Band D. Minimum 12 months tenancy. £100.00 holding deposit must be paid within the first 24 hours of an offer being accepted.

Location:

SK10 2TP, Thetford Close. The property is located on the left hand side.

SK10 2TP, Thetford Close. The property is located on the left hand side.

Viewing: By appointment with Holden and Prescott 01625 422244

Entrance Hall

Lounge

14'7" x 12'11"

Conservatory

9'2" x 8'4"

Kitchen / Dining Room

23'3" x 7'11"

Utility

8'1" x 4'10"

WC

4'7" x 3'1"

Garage

8'7" x 8'3"

Bedroom 1

8'1" x 9'8" extending to 12'9"

Bedroom 2

8'5" x 10'5"

Bedroom 3

8'6" x 7'1"

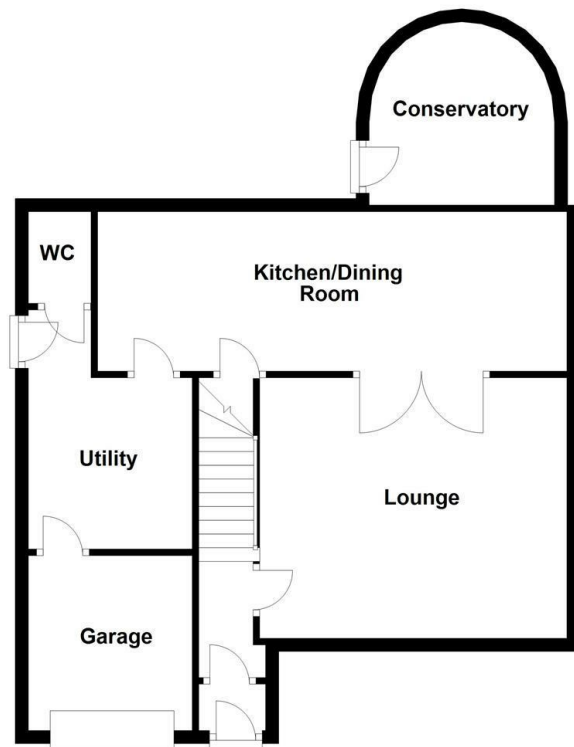
Shower Room

7'1" x 9'9" l shaped

£1,600 Per Calendar Month

HOLDEN & PRESCOTT

Ground Floor



First Floor

