





## 35, Lowe Street, Macclesfield, Cheshire SK11 7NJ

\*\*\*TO LET\*\*\* This two double bedroom end terrace property offers spacious well presented accommodation situated only a stones throw from the town centre and train station. With the benefits of both gas fired central heating and uPVC double glazing the accommodation in brief comprises lounge and dining kitchen on the ground floor whilst to the first floor there are two double bedrooms and shower room. To the rear of the property there is a private garden. There is also a private parking space.

Available from immediately and offered unfurnished. Tax Band B. No pets. £100 Holding Deposit.

Viewing By Appointment with Holden and Prescott.

From the station proceed along Sunderland Street in the direction of Park Green. Continue across the lights into Park Street taking the first turning on the left hand side into Lowe Street. The property can be found on the right hand side.

From the station proceed along Sunderland Street in the direction of Park Green. Continue across the lights into Park Street taking the first turning on the left hand side into Lowe Street. The property can be found on the right hand side.

**Viewing: By appointment with Holden and Prescott 01625 422244**

---

**Lounge**

16'9 x 11'5

**Dining Kitchen**

11'6 x 10'2

**Bedroom One**

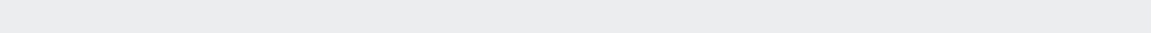
11'6 x 10'4

**Bedroom Two**

11'5 x 9'8

**Bathroom**

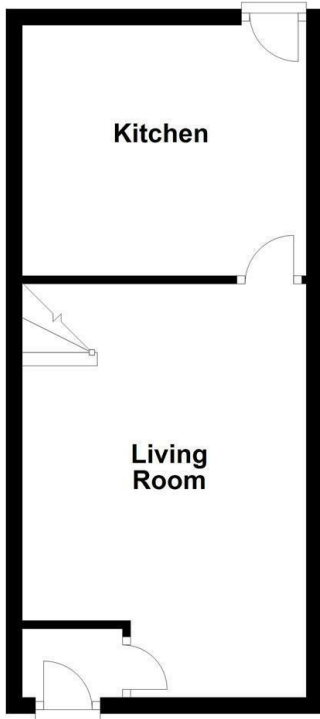
8'3 x 4'6



**£900 Per Calendar Month**

**HOLDEN & PRESCOTT**

Ground Floor



First Floor

