

HUNTERS®

HERE TO GET *you* THERE

Denman House, Lordship Terrace, London, N16

Price £500,000

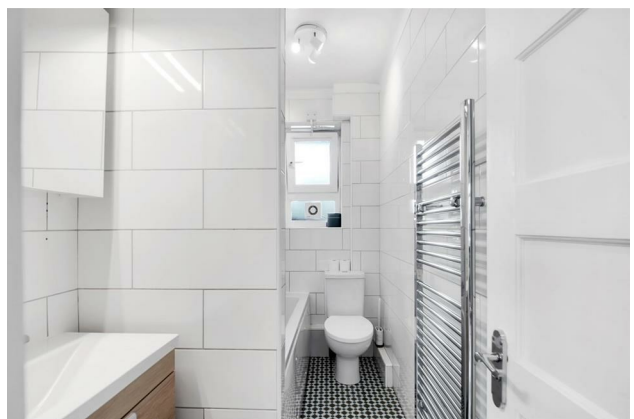
Property Images



HUNTERS[®]

HERE TO GET *you* THERE

Property Images



HUNTERS[®]

HERE TO GET *you* THERE

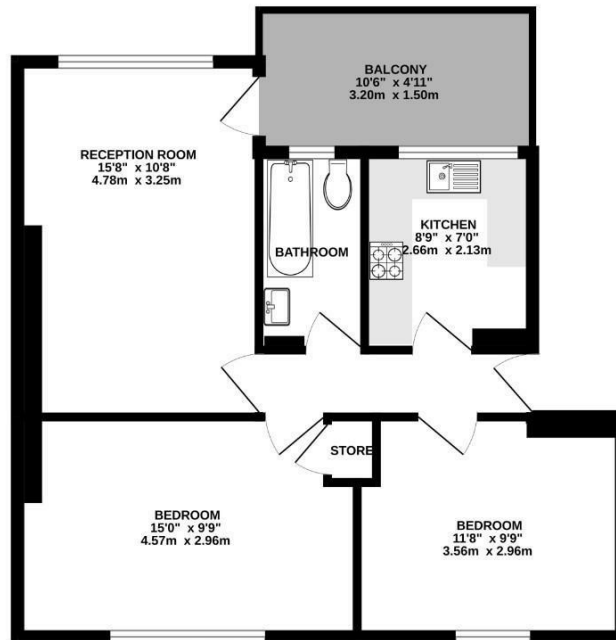
Property Images



HUNTERS®

HERE TO GET *you* THERE

FIRST FLOOR
606 sq.ft. (56.3 sq.m.) approx.



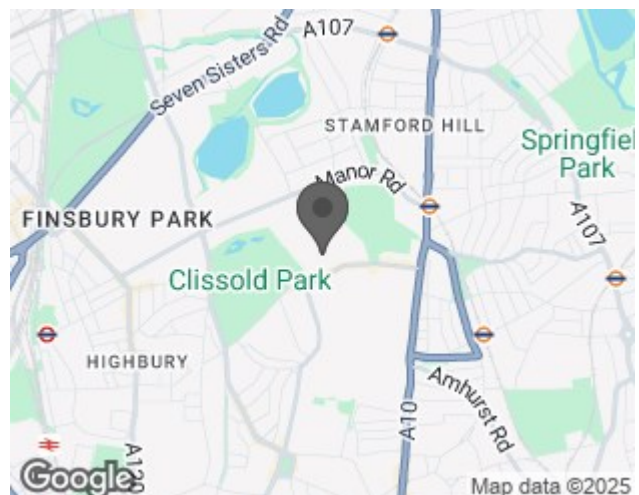
TOTAL FLOOR AREA - 606 sq.ft. (56.3 sq.m.) approx.
While every attempt has been made to ensure the accuracy of the floorplan contained herein, measurements of floors, windows, rooms and any other items are approximate and no responsibility is taken for any errors, omission or mis-statement. This plan is for illustrative purposes only and should be used as such by any prospective purchaser. The services, systems and appliances shown have not been tested and no guarantee as to their operability or efficiency can be given.
Made with Metropix 12/2021



EPC

Energy Efficiency Rating		
	Current	Potential
Very energy efficient - lower running costs		
(92 plus) A		
(81-91) B		
(69-80) C	73	78
(55-68) D		
(39-54) E		
(21-38) F		
(1-20) G		
Not energy efficient - higher running costs		
England & Wales	EU Directive 2002/91/EC	

Map



Details

Type: Apartment - Purpose Built Beds: 2 Bathrooms: 1 Reception: 1 Tenure: Leasehold

Summary

Available to view by appointment only, this purpose built apartment offers 605 sq. ft. (56 sqm.) of internal accommodation and is presented in excellent condition, benefiting from stunning parquet flooring throughout, the property is situated on the first floor and comprises, reception room with access to south west facing balcony, master bedroom, guest bedroom, separate kitchen and a modern bathroom.

Built in 1937 by the Church Commissioners, Denman House is located just off Church Street and is considered one of Stoke Newington's most desirable private blocks. being only seconds from the many bars, restaurants and coffee houses of Stoke Newington Church Street as well being only a short walk from the stunning Clissold Park.

Transport links include, Stoke Newington Station (Overground), Manor House Station (Piccadilly Line) and a wide variety of bus routes into The City and West End.

Features

- Two bedrooms • Balcony • First floor • Excellent condition • Separate kitchen • Close to Church Street • Close to Clissold Park • Parquet flooring