

## Denman House, Lordship Terrace, London, N16

Price £465,000

Property Images





# HUNTERS®

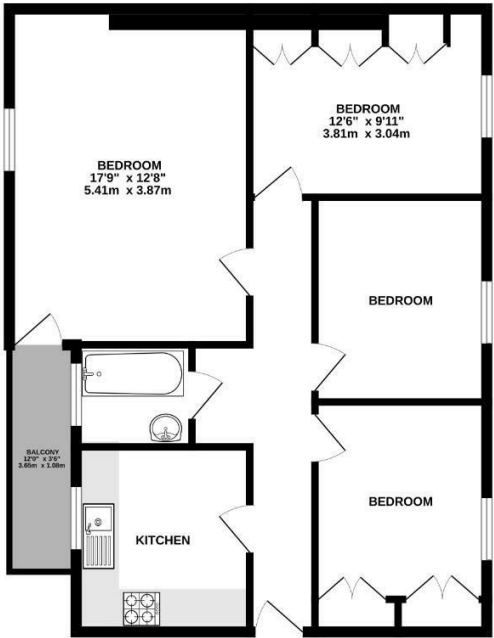
HERE TO GET *you* THERE

## Property Images



## Floorplan

GROUND FLOOR  
764 sq.ft. (71.0 sq.m.) approx.



TOTAL FLOOR AREA: 764 sq.ft. (71.0 sq.m.) approx.

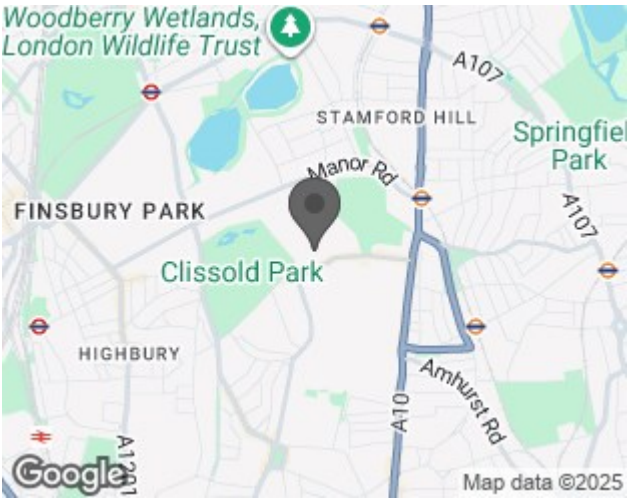
Whilst every attempt has been made to ensure the accuracy of the floorplan contained here, measurements of doors, windows, stairs and any other areas are approximate and no responsibility is taken for any error, omission or mis-statement. This plan is for illustrative purposes only and should be used as such by any prospective purchaser. The services, systems and appliances shown have not been tested and no guarantee as to their operability or efficiency can be given.  
Made with Interplan 15/02/25



## EPC

Energy Efficiency Rating		
	Current	Potential
Very energy efficient - lower running costs		
(92 plus) <b>A</b>		
(81-91) <b>B</b>		
(69-80) <b>C</b>		77
(55-68) <b>D</b>	59	
(39-54) <b>E</b>		
(21-38) <b>F</b>		
(1-20) <b>G</b>		
Not energy efficient - higher running costs		
England & Wales	EU Directive 2002/91/EC	

## Map



## Details

Type: Apartment - Purpose Built Beds: 3 Bathrooms: 1 Reception: 1 Tenure: Leasehold

## Summary

Offered to the market chain free, this spacious three-bedroom ground floor apartment is located within Denman House, one of Stoke Newington's most desirable private blocks, built in 1937 by the Church Commissioners.

The property offers generous proportions and excellent natural light throughout, comprising a south-facing reception room with access to a private balcony, three bedrooms, a separate kitchen and bathroom. In need of full modernisation, it presents an excellent opportunity for buyers to create a home tailored to their own taste and specification.

Denman House is located on Lordship Terrace, only seconds from the many bars, restaurants and coffee houses of Stoke Newington Church Street, as well as being just a short walk from the stunning Clissold Park.

Transport links include Stoke Newington Station (Overground), Manor House Station (Piccadilly Line) and a variety of bus routes into The City and West End.

## Features