

# HUNTERS®

HERE TO GET *you* THERE

**Brighton Road, London, N16**

**Price £1,750,000**

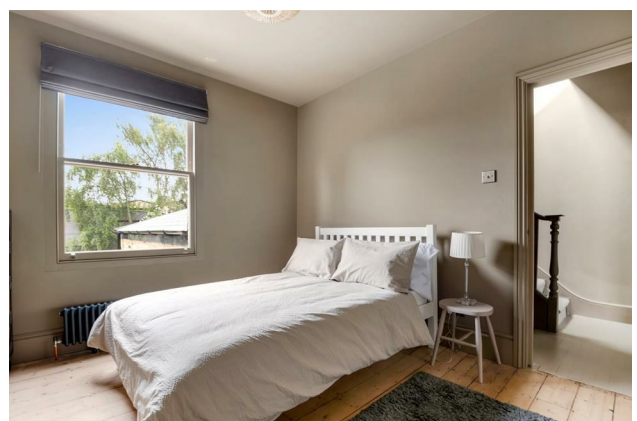
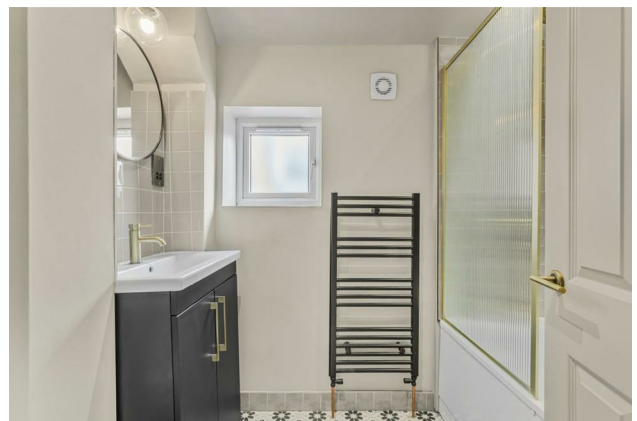
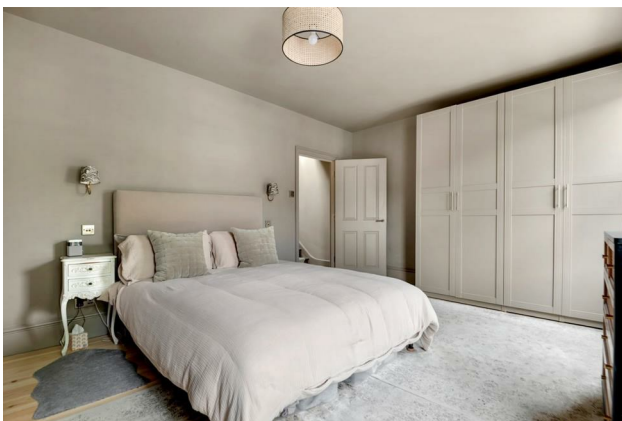
**Property Images**



# HUNTERS®

HERE TO GET *you* THERE

## Property Images



# HUNTERS<sup>®</sup>

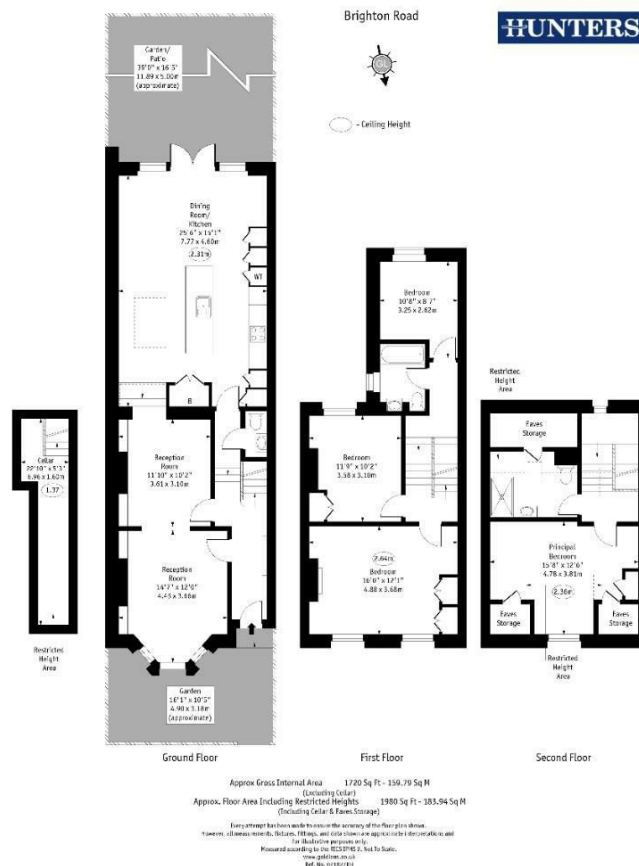
HERE TO GET *you* THERE

## Property Images

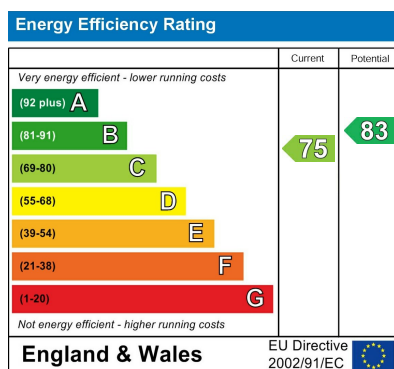


# HUNTERS®

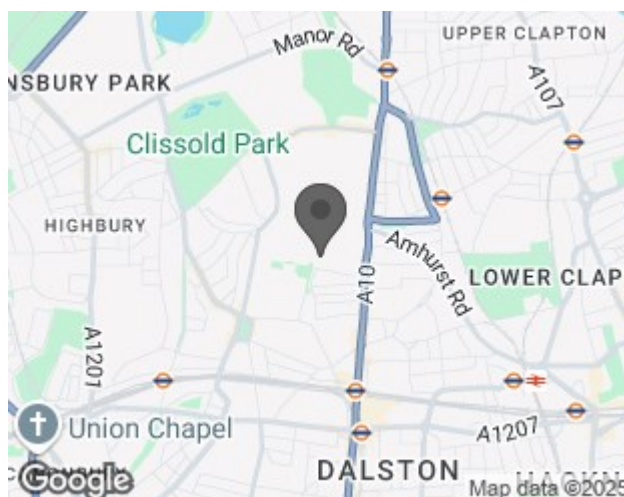
HERE TO GET *you* THERE



## EPC



## Map



## Details

Type: House - Terraced Beds: 4 Bathrooms: 2 Reception: 2 Tenure: Freehold

## Summary

Available to view by appointment only, this beautifully restored four-bedroom, two-bathroom house is located on a popular residential street and offers over 1,980 sq. ft. (183 sqm.) of internal space. The property boasts a wider-than-average, extended kitchen/dining room and a stunning 39 ft. (11.8 m) south facing garden.

The ground floor comprises a double reception room with a bay window and exposed floorboards. The extended kitchen/dining room, which spans over 25 feet (7.5 meters) in length with underfloor heating, features a central island, built-in appliances. A large skylights and double crittall-style doors lead to the private rear garden, making it an ideal space for entertaining. The cellar offers ample storage and there is also a guest W.C. on the ground floor..

The first floor offers a spacious master bedroom that spans the width of the property, two further double bedrooms, and a modern family bathroom. The second floor provides a fourth double bedroom and an additional stylish bathroom with underfloor heating, along with ample eaves storage.

Brighton Road is a quiet residential street located off Stoke Newington High Street as well as being only moments away from the wide range of bars, restaurants & coffee houses of Church Street and the wide open spaces of Butterfield Green & the stunning Clissold Park.

Transport links include Rectory Road Station (Overground), Stoke Newington Station (Overground), Dalston Kingsland & Junction Stations (Overground) and a wide variety of bus routes allowing easy access into The City and West End.

## Features

- Freehold house • Immaculate condition throughout • Four bedrooms • Two bathrooms • Extended kitchen/dining room • Double reception room • Close to local amenities • Close to Butterfield Green