



Aden Grove, , London, N16 9NJ

- Chain Free
- Patio Garden
- Close to Church Street & Newington Green
- Bike Storage
- Ground Floor
- Excellent Condition
- Close to Clissold Park
- Quiet Street

Price £489,995



Aden Grove, , London, N16 9NJ

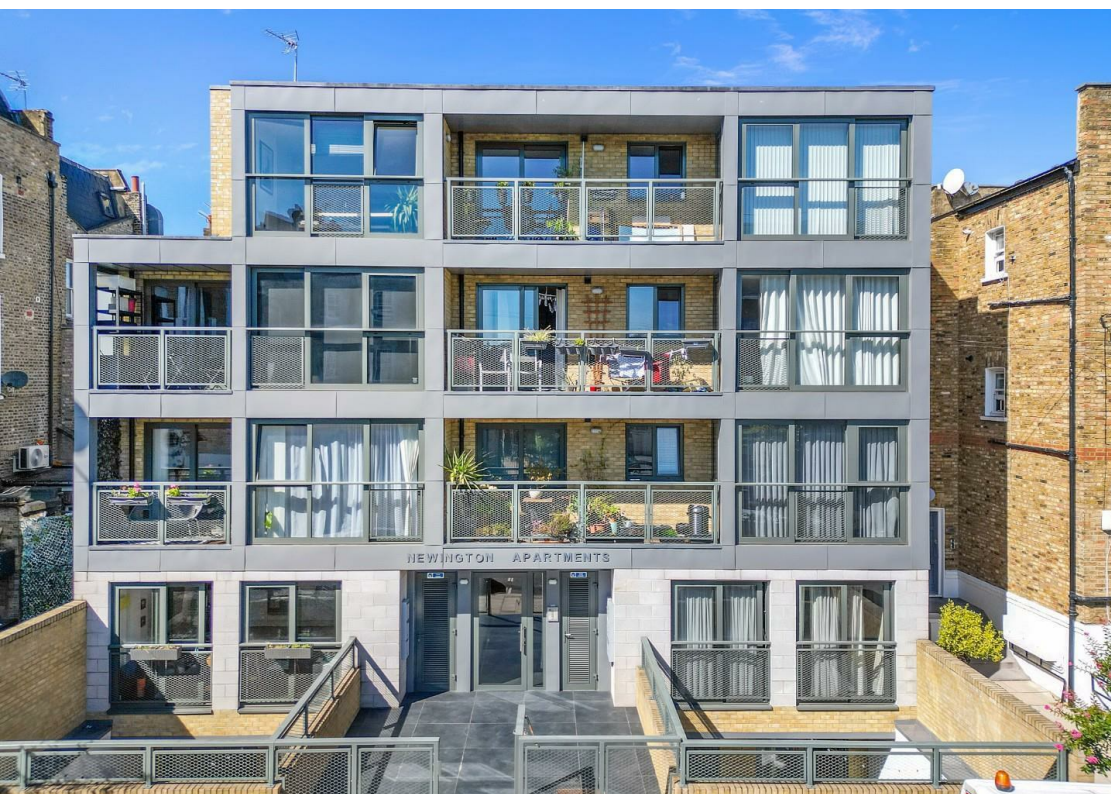
DESCRIPTION

Available chain free and set within a modern, well maintained purpose built building, central Stoke Newington, this fantastic one bedroom garden flat offers over 600sq ft of accommodation and sole use of a patio garden.

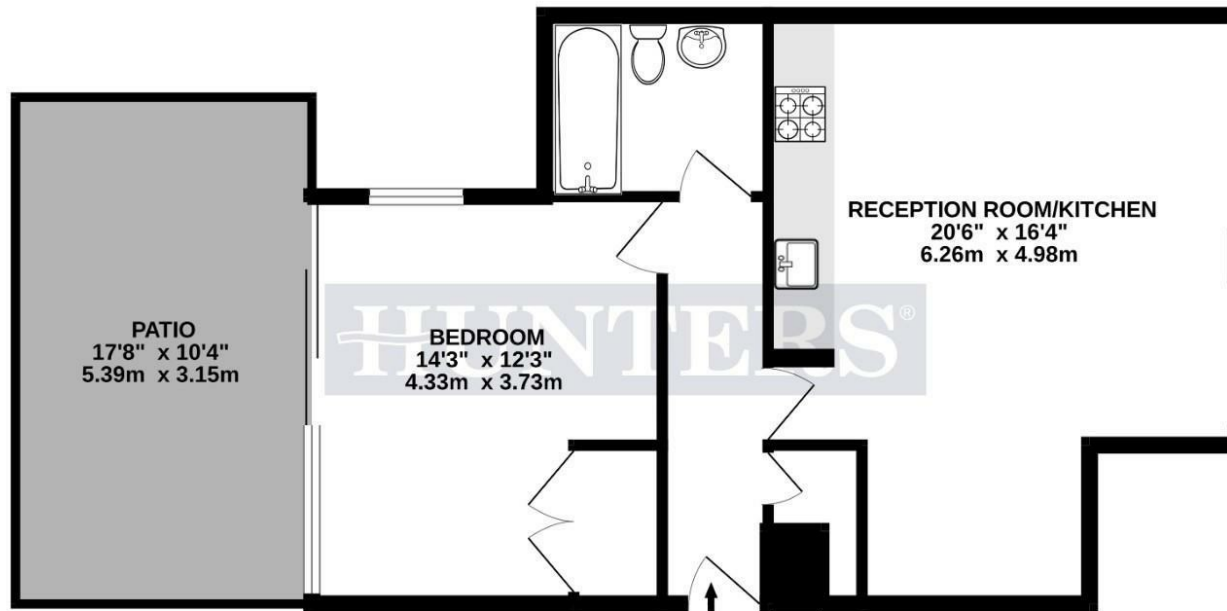
Available to view by appointment only and rarely available on the open market, this wonderful apartment is situated on the ground floor and comprises, large open plan kitchen reception room over 20 feet in length, a spacious bedroom with large doors leading to the patio garden, modern bathroom and ample storage.

Newington Apartments is located on Aden Grove, a quiet residential street located moments from the many bars, restaurants and coffee houses of Stoke Newington Church Street and Newington Green as well as only being a short walk from the stunning Clissold Park. Transport links include, Canonbury Station (Overground) and a variety of bus routes into The City and West End.





GROUND FLOOR
604 sq.ft. (56.1 sq.m.) approx.



TOTAL FLOOR AREA: 604sq.ft. (56.1 sq.m.) approx.

Whilst every attempt has been made to ensure the accuracy of the floorplan contained here, measurements of doors, windows, rooms and any other items are approximate and no responsibility is taken for any error, omission or mis-statement. This plan is for illustrative purposes only and should be used as such by any prospective purchaser. The services, systems and appliances shown have not been tested and no guarantee as to their operability or efficiency can be given.
Made with Metropix ©2023



Viewings

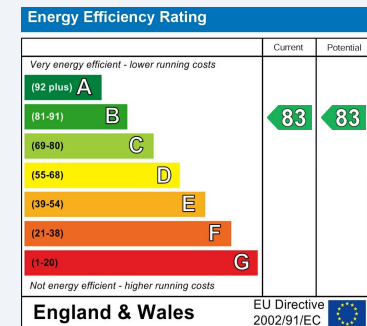
Please contact hunters.stokenewington@hunters.com, if you wish to arrange a viewing appointment for this property or require further information.

Valuations

For a valuation of your property, please email the team with your property details, contact information and the times you are available.

ENERGY PERFORMANCE CERTIFICATE

The energy efficiency rating is a measure of the overall efficacy of a home. The higher the rating the more energy efficient the home is and the lower the fuel bills will be.



These particulars are intended to give a fair and reliable description of the property but no responsibility for any inaccuracy or error can be accepted and do not constitute an offer or contract. We have not tested any services or appliances (including central heating if fitted) referred to in these particulars and the purchasers are advised to satisfy themselves as to the working order and condition. If a property is unoccupied at any time there may be reconnection charges for any switched off/disconnected or drained services or appliances - All measurements are approximate.

THINKING OF SELLING? If you are thinking of selling your home or just curious to discover the value of your property, Hunters would be pleased to provide free, no obligation sales and marketing advice. Even if your home is outside the area covered by our local offices we can arrange a Market Appraisal through our national network of Hunters estate agents.



185 - 187 Church Street, Stoke Newington, London, N16 0UL
Tel: 0207 2497 499 Email: hunters.stokenewington@hunters.com <https://www.hunters.com>

