

DAVID CHARLES

ESTATE AGENTS • VALUERS • SURVEYORS
THE ESTATE OFFICE • 34 HIGH STREET • PINNER • MIDDLESEX HA5 5PW
TELEPHONE 020 8866 0222 • FAX 020 8868 3544
WEBSITE www.david-charles.co.uk • E-MAIL pinnersales@david-charles.co.uk

HENLEY GARDENS, PINNER, MIDDLESEX, HA5 2DE



PRICE....£725,000....FREEHOLD

This spacious two double bedroom semi detached bungalow (1194 sq.ft/111 sq.m - excluding garage) is located on a quiet road within the catchment area of Harlyn School and half a mile from a wide range of shops, restaurants, and the Metropolitan line tube station. The accommodation includes a 25' x 18' Living/dining room, a modern kitchen, two double bedrooms and a family bath/shower room. Outside the 40' x 80' garden benefits from a southerly aspect with mature tree borders giving an element of seclusion. There is a detached garage with own drive and additional off street parking at the front. The property is offered with no upper chain and has potential for extension, if required.

020 8866 0222









COUNCIL TAX

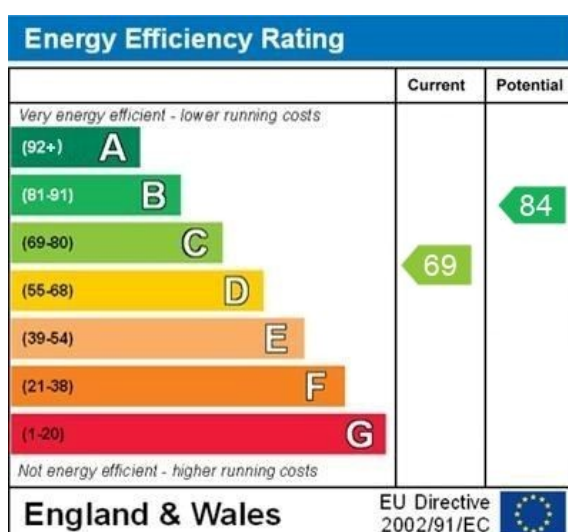
London Borough of Hillingdon - Band E - £2,386.24

LOCAL SCHOOLS

Harlyn Primary School - 0.11 miles
Pinner Wood School - 0.63 miles (Ofsted Outstanding)
Haydon School - 0.46 miles
Northwood School - 0.52 miles (Ofsted Outstanding)

LOCAL TRANSPORT

Northwood Hills Station - 0.6 miles

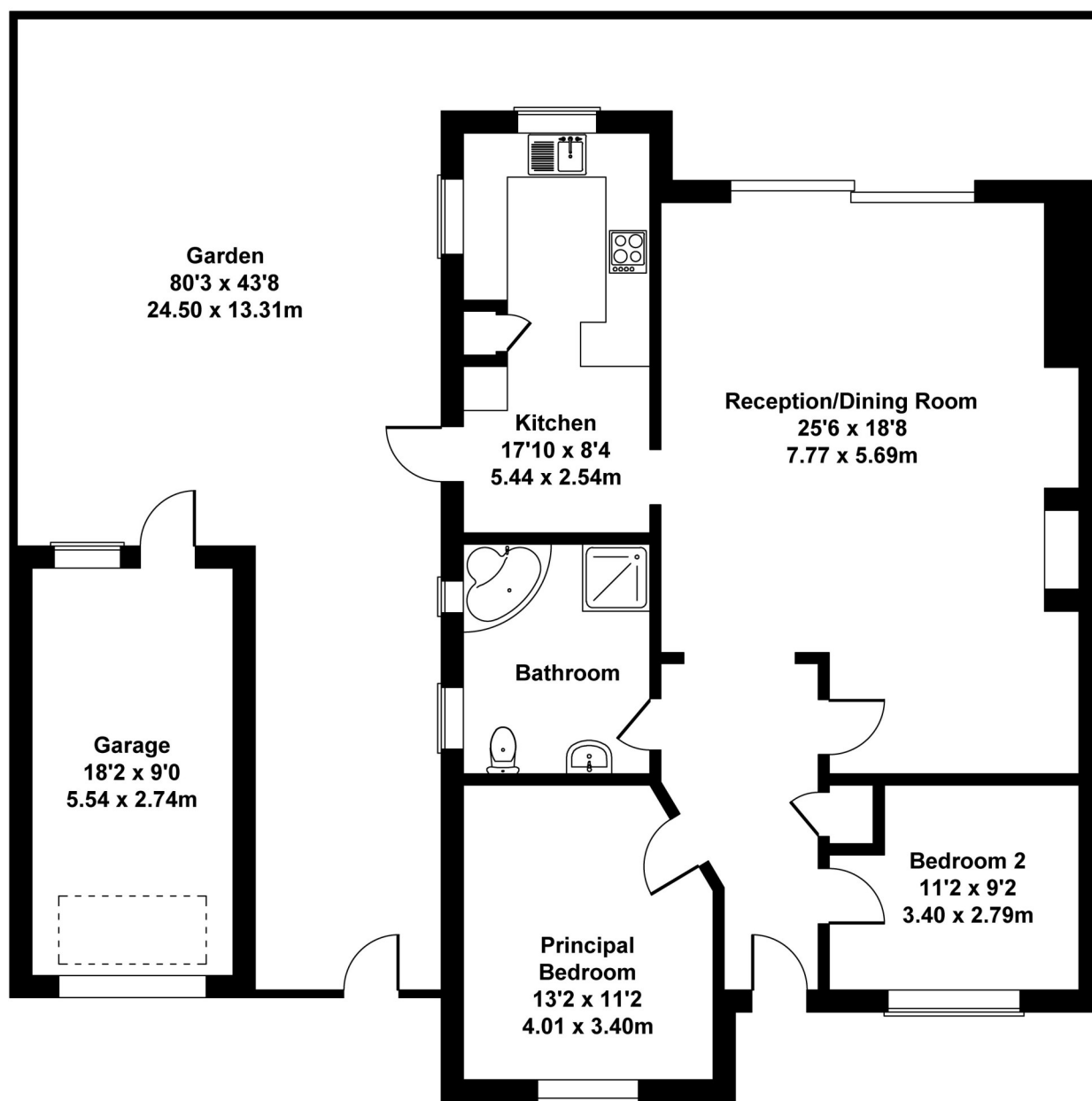


WWW.EPC4U.COM

Henley Gardens

Approximate Gross Internal Area

1194 sq ft - 111 sq m



Not to Scale. Produced by The Plan Portal 2025
For Illustrative Purposes Only.

For appointments to view please call David Charles 020 8866 0222

All measurements are taken manually and whilst every care is taken with their accuracy they must be considered approximate and should not be relied upon when purchasing carpets or furniture. No responsibility is taken for any error, omission or misunderstanding in these particulars which do not constitute an offer or contract. Services and appliances have not been tested and therefore no warranty is offered on their operational condition.