

DAVID CHARLES

ESTATE AGENTS • VALUERS • SURVEYORS
THE ESTATE OFFICE • 34 HIGH STREET • PINNER • MIDDLESEX HA5 5PN
TELEPHONE 020 8866 0222 • FAX 020 8868 3544
WEBSITE www.david-charles.co.uk • E-MAIL enquiries@david-charles.co.uk

EASTFIELDS, PINNER, MIDDLESEX, HA5 2SR



PRICE....£820,000....FREEHOLD

This bright two bedroom detached bungalow (957 sq.ft/88.9 sq.m) is situated in this quiet cul de sac location off Bridle Road within half a mile of Eastcote Town Centre with its vast array of shops, restaurants, supermarkets, coffee houses and Metropolitan/Piccadilly Line Station. The naturally light accommodation comprises of entrance hall, 17'9ft reception room, modern 20'10ft kitchen/breakfast room, two bedrooms and modern fitted bath/shower room. Outside there is a 16'7ft garage own drive with off street parking for two cars and 50ft rear garden with a paved patio area leading to lawn, shrub and flower borders and summer house. The property benefits from being offered chain free.

020 8866 0222







COUNCIL TAX

London Borough of Hillingdon - Band F - £2,692.30

LOCAL SCHOOLS

Cannon Lane Primary School - 0.37 Miles

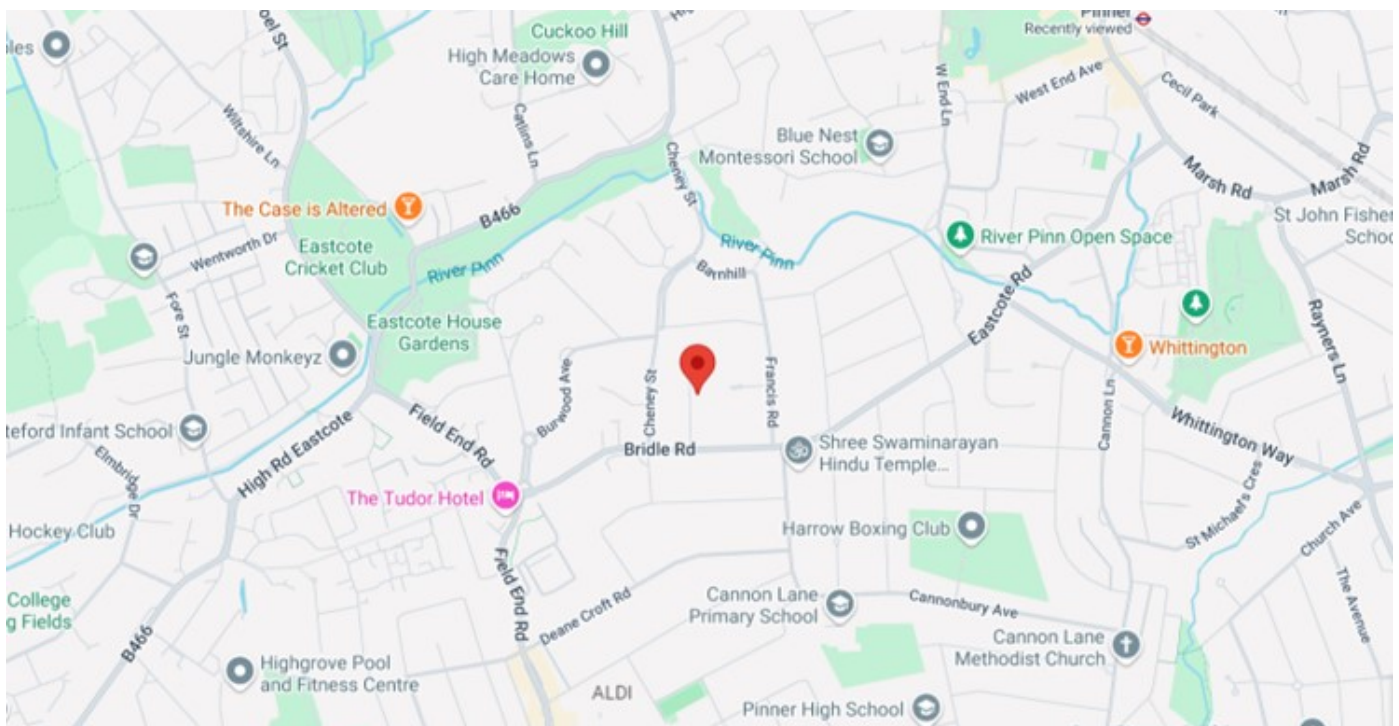
West Lodge Primary School - 0.54 Miles

Pinner High School - 0.55 Miles

Bishop Ramsey C of E School - 0.77 Miles

LOCAL TRANSPORT

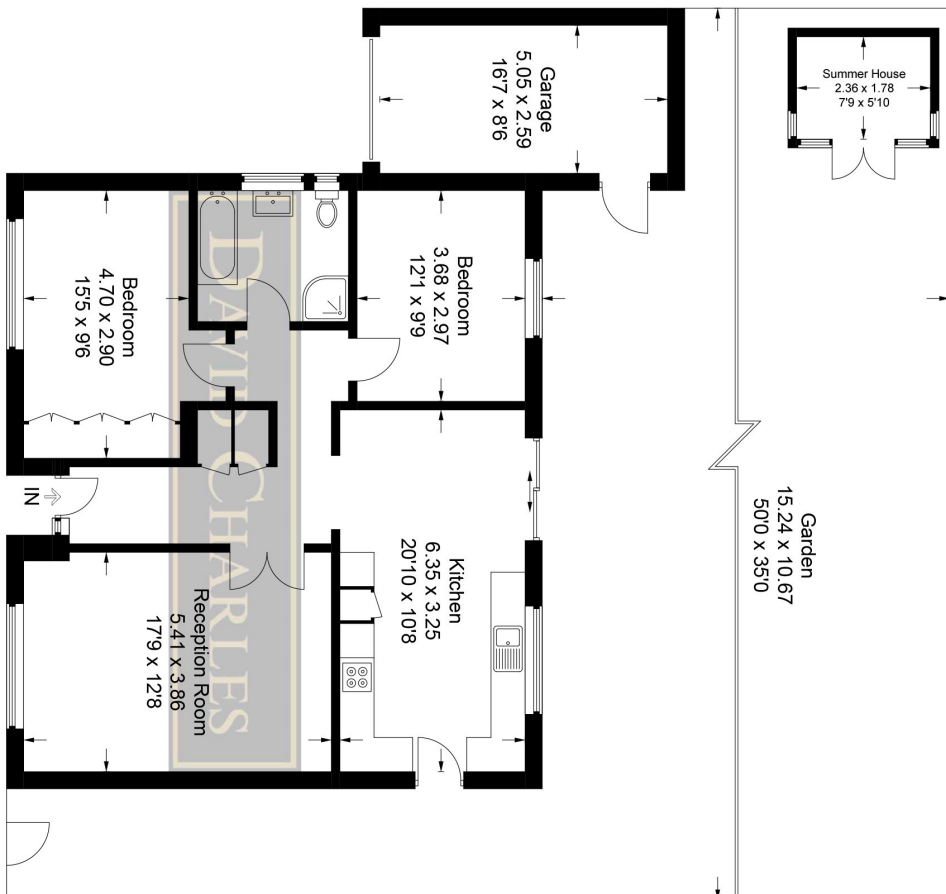
Eastcote Station (Metropolitan/Piccadilly Line) - 0.9 Miles



Score	Energy rating	Current	Potential
92+	A		
81-91	B		85 B
69-80	C		
55-68	D	65 D	
39-54	E		
21-38	F		
1-20	G		

Eastfields

Approximate Gross Internal Area = 88.9 sq m / 957 sq ft
 Outbuildings = 17.5 sq m / 188 sq ft
 Total = 106.4 sq m / 1,145 sq ft



Ground Floor

This plan is for layout guidance only. Not drawn to scale unless stated. Windows and door openings are approximate. Whilst every care is taken in the preparation of this plan, please check all dimensions, shapes and compass bearings before making any decisions reliant upon them.

© CJ Property Marketing Ltd Produced for David Charles

For appointments to view please call David Charles 020 8866 0222

All measurements are taken manually and whilst every care is taken with their accuracy they must be considered approximate and should not be relied upon when purchasing carpets or furniture. No responsibility is taken for any error, omission or misunderstanding in these particulars which do not constitute an offer or contract. Services and appliances have not been tested and therefore no warranty is offered on their operational condition.