

# DAVID CHARLES

ESTATE AGENTS • VALUERS • SURVEYORS  
THE ESTATE OFFICE • 34 HIGH STREET • PINNER • MIDDLESEX HA5 5PN  
TELEPHONE 020 8866 0222 • FAX 020 8868 3544  
WEBSITE [www.david-charles.co.uk](http://www.david-charles.co.uk) • E-MAIL [enquiries@david-charles.co.uk](mailto:enquiries@david-charles.co.uk)

## IMPERIAL DRIVE, NORTH HARROW, MIDDLESEX, HA2 7HW



**PRICE....£679,950....FREEHOLD**

This Mock Tudor style four bedroom semi detached house (1444 sq. ft/134 sq. m) is ideally located within 0.3 miles of Rayners Lane shopping facilities and train station (Metropolitan/Piccadilly line) and 0.6 miles to North Harrow town centre. It is also within 3/4 of a mile of Vaughan Primary and Whitmore High Schools (both Ofsted Outstanding).

The property requires updating giving the purchaser the opportunity to modernise it to their exact requirements. The accommodation includes a 21' x 20' L shaped living/dining room, a kitchen and guest cloakroom. The first floor has two double bedrooms, bedroom three and a bathroom with separate WC. The second floor has a fourth double bedroom and a large walk-in eaves storage space. Outside the rear garden is approximately 60' long with a paved patio, main lawn, storage shed and greenhouse. There is also a detached garage with own drive and the property is offered with vacant possession.

**020 8866 0222**

















### **COUNCIL TAX**

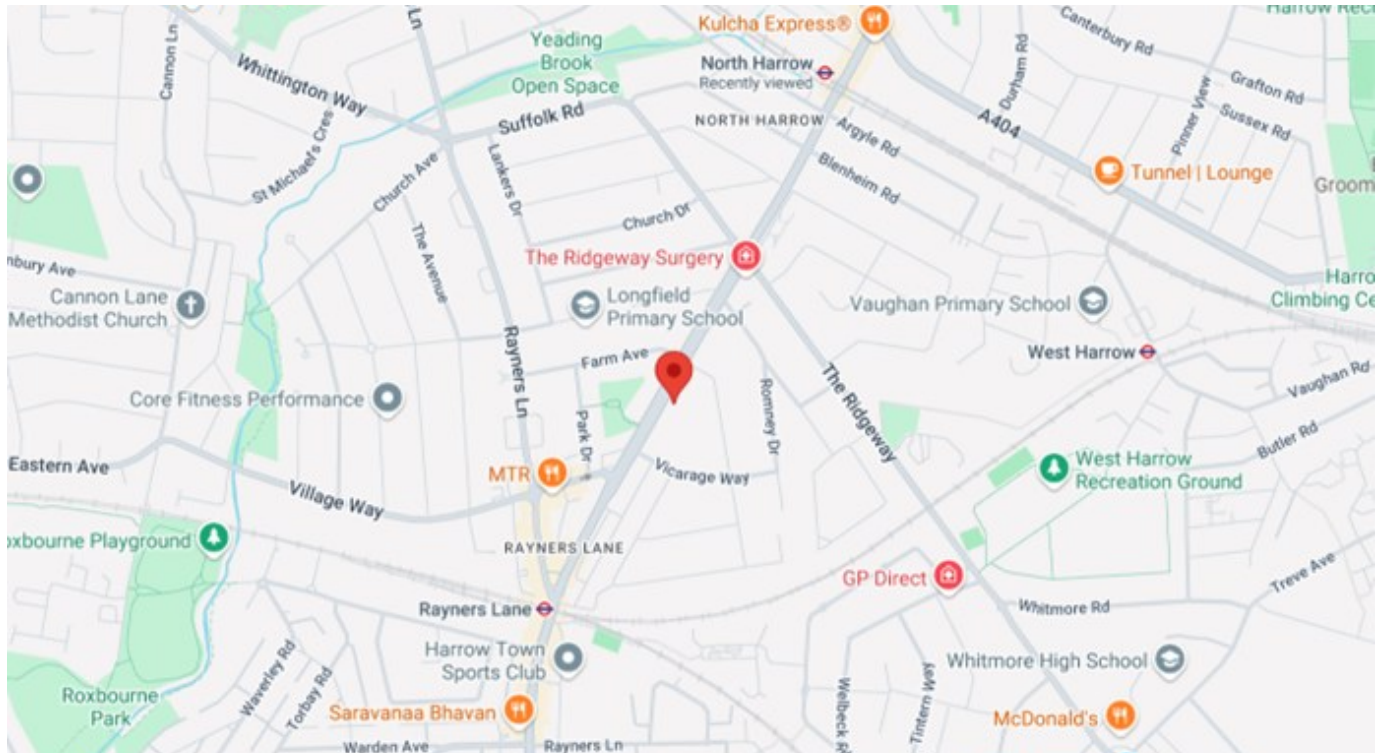
London Borough of Harrow - Band E - £2,794.40

### **LOCAL SCHOOLS**

Longfield Primary School - 0.18 Miles  
Vaughan Primary School - 0.53 Miles  
Whitmore High School - 0.71 Miles  
Nower Hill High School - 0.86 Miles

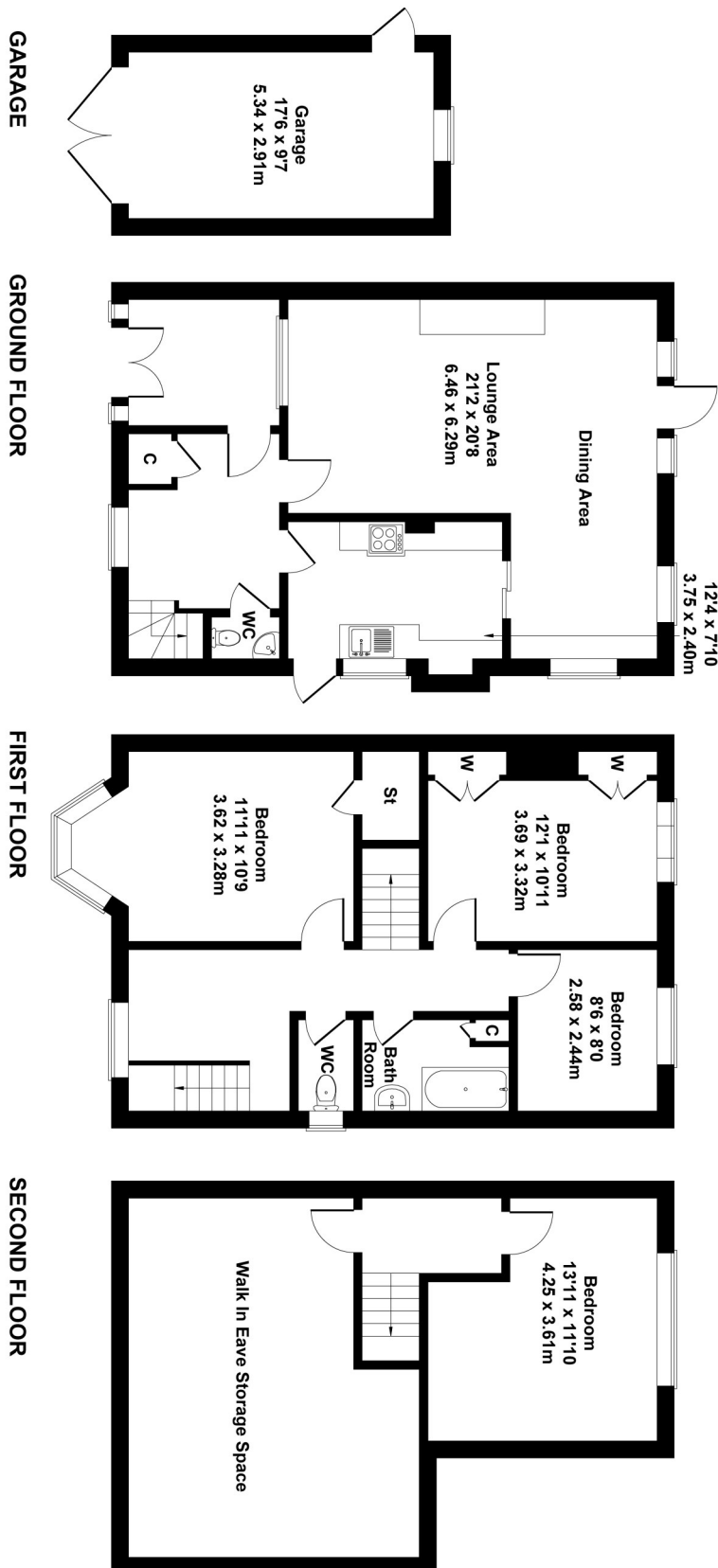
### **LOCAL TRANSPORT**

Rayners Lane Station (Metropolitan/Piccadilly Line) - 0.3 Miles  
North Harrow Station (Metropolitan Line) - 0.6 Miles



## Imperial Drive, North Harrow Harrow

Approximate Gross Internal Area  
1444 sq ft - 134 sq m



Not to Scale. Produced by The Plan Portal 2024  
For Illustrative Purposes Only.

***For appointments to view please call David Charles 020 8866 0222***

*All measurements are taken manually and whilst every care is taken with their accuracy they must be considered approximate and should not be relied upon when purchasing carpets or furniture. No responsibility is taken for any error, omission or misunderstanding in these particulars which do not constitute an offer or contract. Services and appliances have not been tested and therefore no warranty is offered on their operational condition.*