

DAVID CHARLES

ESTATE AGENTS • VALUERS • SURVEYORS
THE ESTATE OFFICE • 34 HIGH STREET • PINNER • MIDDLESEX HA5 5PN
TELEPHONE 020 8866 0222 • FAX 020 8868 3544
WEBSITE www.david-charles.co.uk • E-MAIL enquiries@david-charles.co.uk

CHAMBERLAIN WAY, PINNER, MIDDLESEX, HA5 2AT



PRICE....£499,950....FREEHOLD

A modern two double bedroom terraced house (673 sq. ft/62.6 sq. m) located on a quiet residential road within a short walk of a local meadow, Harlyn School, and shopping facilities including Tesco's supermarket. Northwood Hills selection of restaurants, shops and the Metropolitan Line train station are within approximately a 15 minute walk. The accommodation offers a spacious living room with wood flooring, a fitted kitchen with integrated appliances and a guest cloakroom. There are two double bedrooms with fitted wardrobes and a family bathroom. Outside the front provides private parking for two cars and there is a 50ft rear garden with a patio and main lawn with shrub borders. Offered with no upper chain.

020 8866 0222







COUNCIL TAX

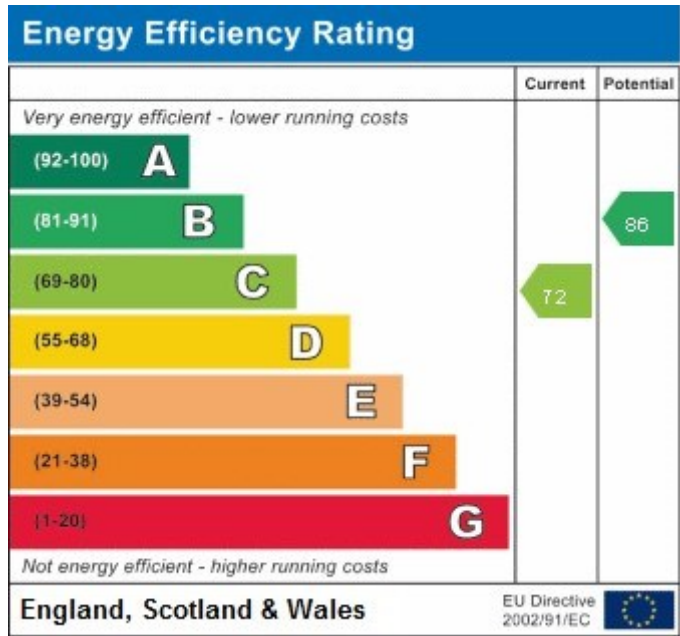
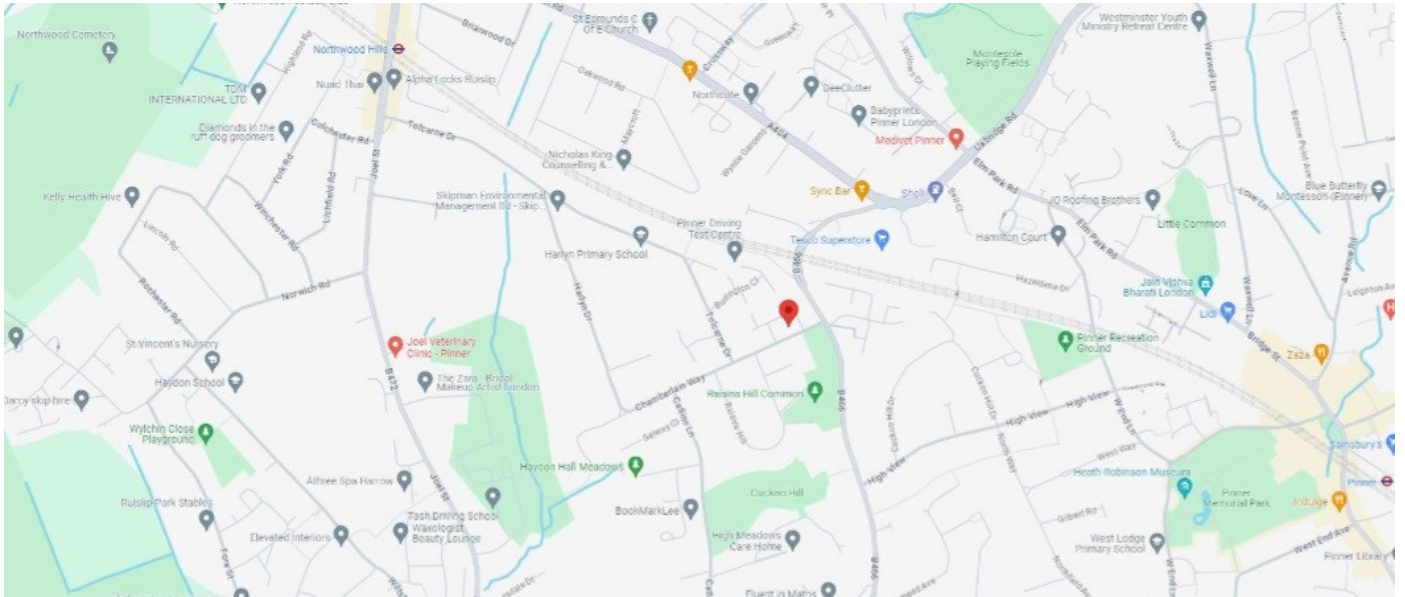
London Borough of Harrow - Band D - £1,863.91

LOCAL SCHOOLS

Harlyn Primary School - 0.13 Miles
Pinner Wood Primary School - 0.51 Miles
Northwood School - 0.57 Miles
Haydon High School - 0.64 Miles

LOCAL TRANSPORT

Northwood Hills Station (Metropolitan Line) - 0.7 Miles
Pinner Station (Metropolitan Line) - 1.0 Miles



Chamberlain Way

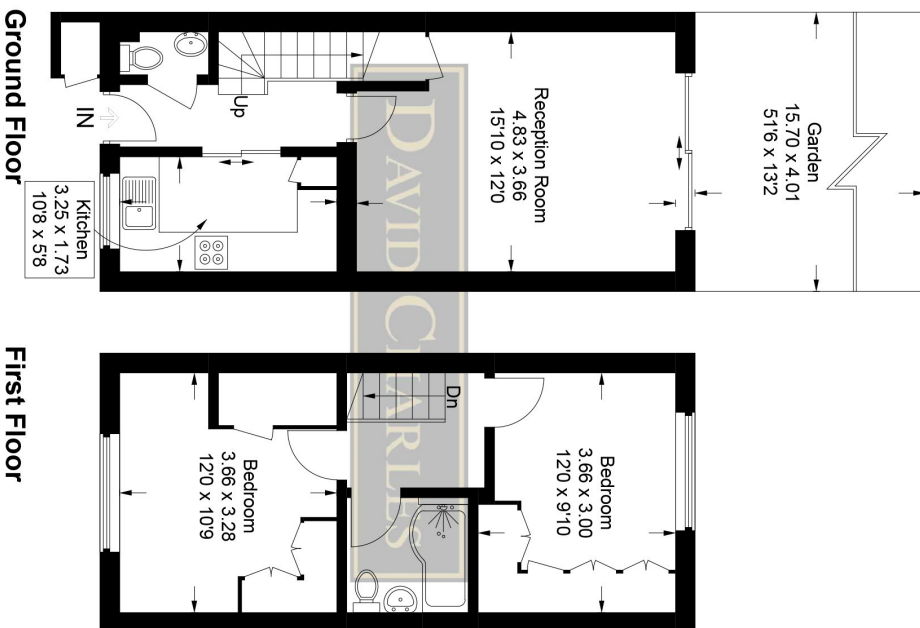
Approximate Gross Internal Area

Ground Floor = 31.3 sq m / 337 sq ft

First Floor = 30.8 sq m / 331 sq ft

External Cupboard = 0.5 sq m / 5 sq ft

Total = 62.6 sq m / 673 sq ft



This plan is for layout guidance only. Not drawn to scale unless stated. Windows and door openings are approximate. Whilst every care is taken in the preparation of this plan, please check all dimensions, shapes and compass bearings before making any decisions reliant upon them.

© CJ Property Marketing Ltd Produced for David Charles

For appointments to view please call David Charles 020 8866 0222

All measurements are taken manually and whilst every care is taken with their accuracy they must be considered approximate and should not be relied upon when purchasing carpets or furniture. No responsibility is taken for any error, omission or misunderstanding in these particulars which do not constitute an offer or contract. Services and appliances have not been tested and therefore no warranty is offered on their operational condition.