

DAVID CHARLES

ESTATE AGENTS • VALUERS • SURVEYORS
THE ESTATE OFFICE • 34 HIGH STREET • PINNER • MIDDLESEX HA5 5PW
TELEPHONE 020 8866 0222
WEBSITE www.david-charles.co.uk • E-MAIL enquiries@david-charles.co.uk

TOWERS ROAD, PINNER, MIDDLESEX, HA5 4SJ



PRICE....£1,400,000....FREEHOLD

A stunning and fully refurbished five bedroom, three bathroom extended detached family residence situated in this quiet residential turning within easy reach of both Pinner Village and Hatch End Broadway with there vast array of shops, restaurants, coffee houses, supermarkets and Pinner Metropolitan Line Tube Station and Hatch End Overground Train Station. Pinner Wood and Grimsdyke Primary Schools (Both Ofsted Outstanding) are also within the catchment area. The accommodation on the ground floor comprises of a private entrance hall, 15'2ft front reception room with a bay window, double doors open through a 28ft open plan kitchen/dining/family room with integrated high specification appliances and bi-folding doors to rear garden, 10'10ft study, separate well equipped utility room and guest WC. On the first floor there is a generous landing giving access to 15ft second bedroom with luxury fitted en-suite bathroom, three further double bedrooms and luxury fitted family bath/shower room. On the second floor there is an 18'6ft master bedroom suite with Velux windows and Velux Balcony windows and a luxury en suite shower room. Outside there is off street parking for two to three cars, and landscaped rear garden with a raised paved patio with steps and lights leading to approximate 90ft landscaped rear garden with flower and shrub borders.

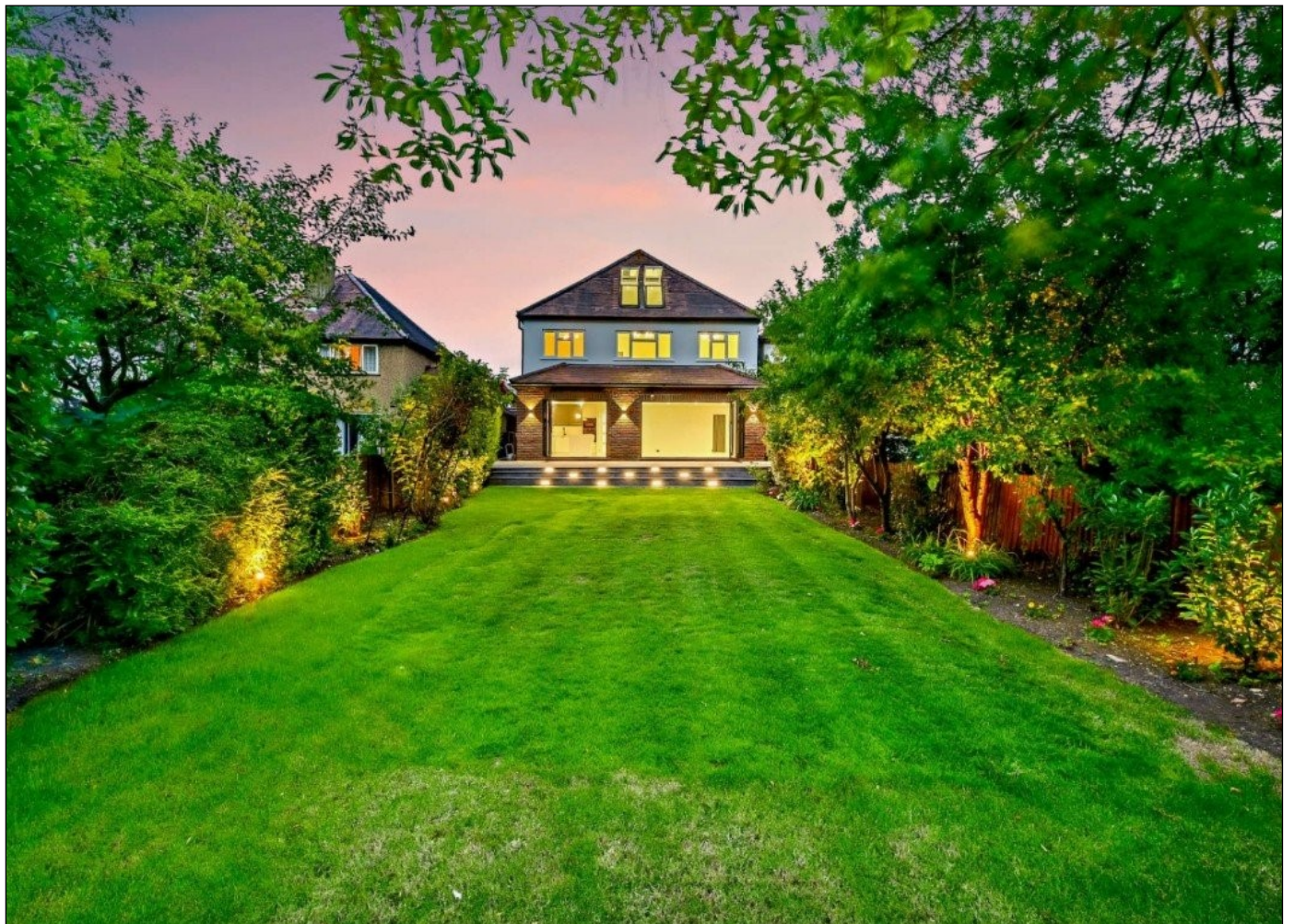
020 8866 0222













COUNCIL TAX

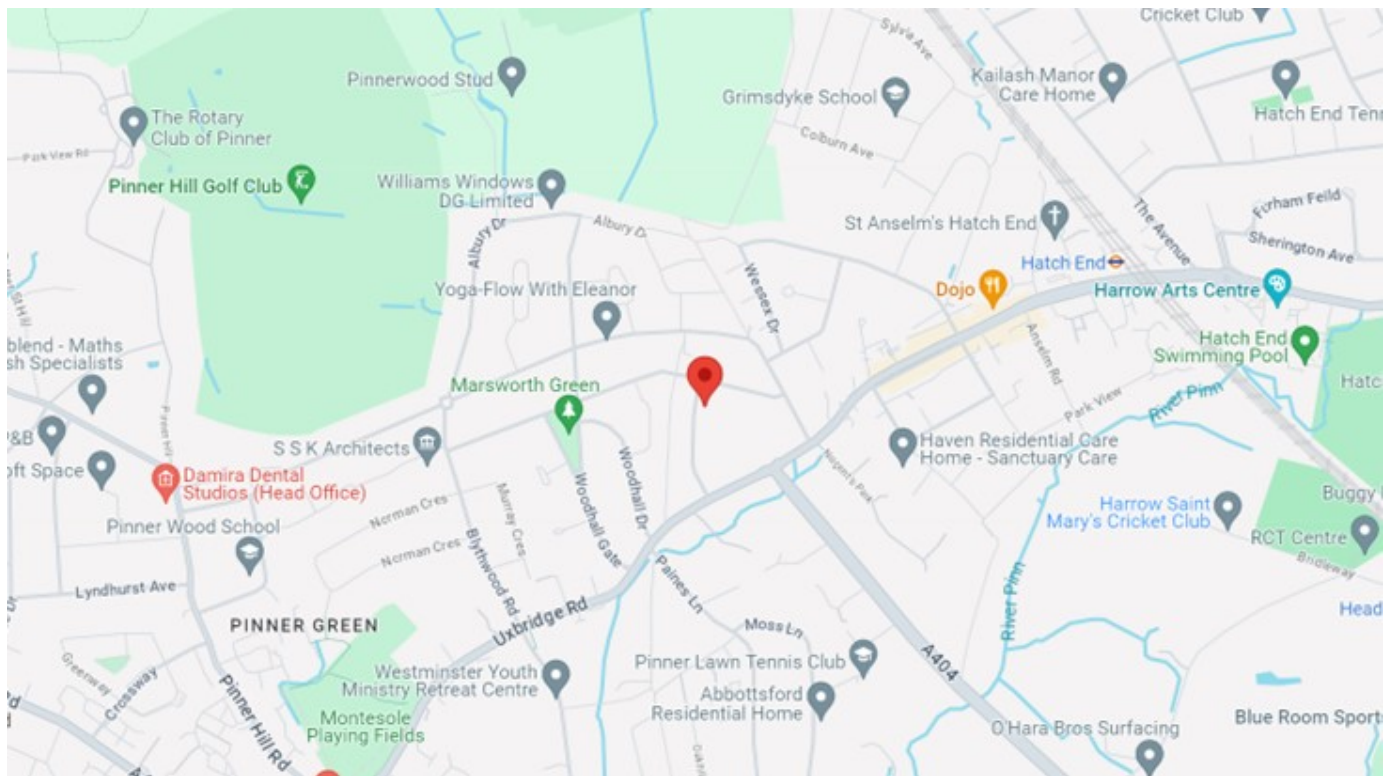
London Borough of Harrow Council - Band G - £3,604.67


LOCAL SCHOOLS

Grimsdyke School - 0.45 miles
Pinner Wood School - 0.65 miles
St John's School - 1.06 miles
Hatch End High School - 1.09 miles

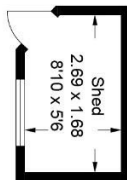
LOCAL TRANSPORT

Hatch End Station - (Overground) - 0.7 miles
Pinner Station (Metropolitan Line) - 1.1 miles

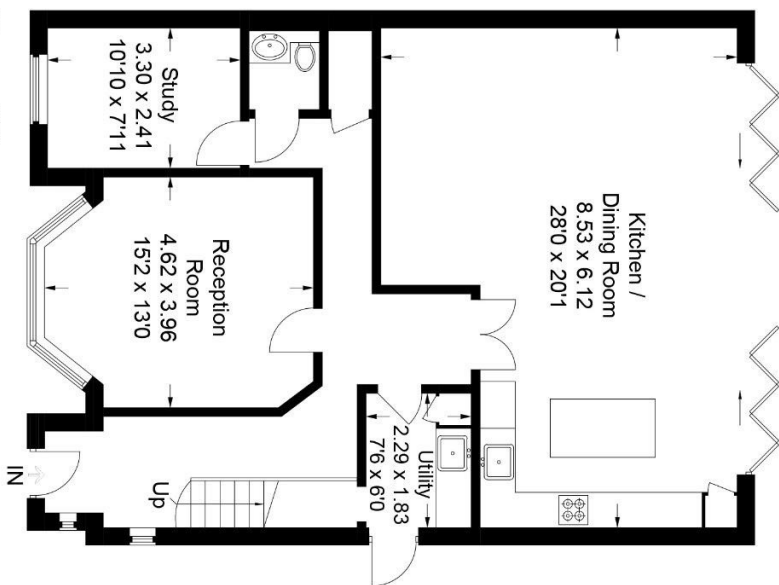


Energy Efficiency Rating		
	Current	Potential
<i>Very energy efficient - lower running costs</i>		
(92-100) A		
(81-91) B		83
(69-80) C	72	
(55-68) D		
(39-54) E		
(21-38) F		
(1-20) G		
<i>Not energy efficient - higher running costs</i>		
England, Scotland & Wales		EU Directive 2002/91/EC 

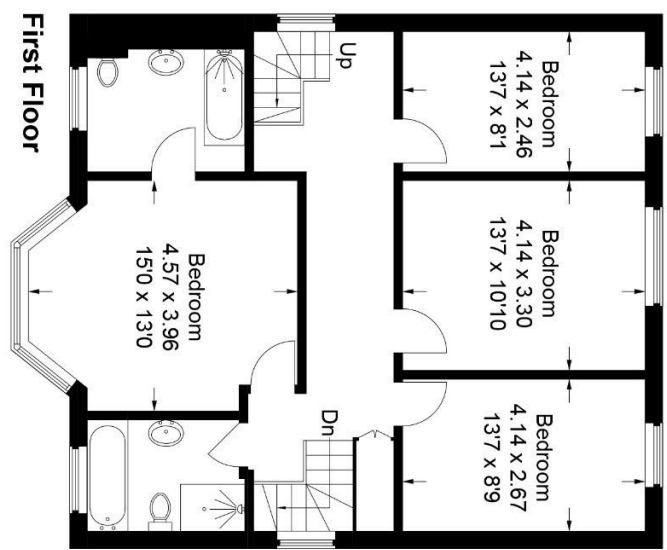
Approximate Gross Internal Area
 Ground Floor = 100.1 sq m / 1,078 sq ft
 First Floor = 84.0 sq m / 904 sq ft
 Second Floor = 54.4 sq m / 586 sq ft
 Shed = 4.3 sq m / 46 sq ft
 Total = 242.8 sq m / 2,614 sq ft



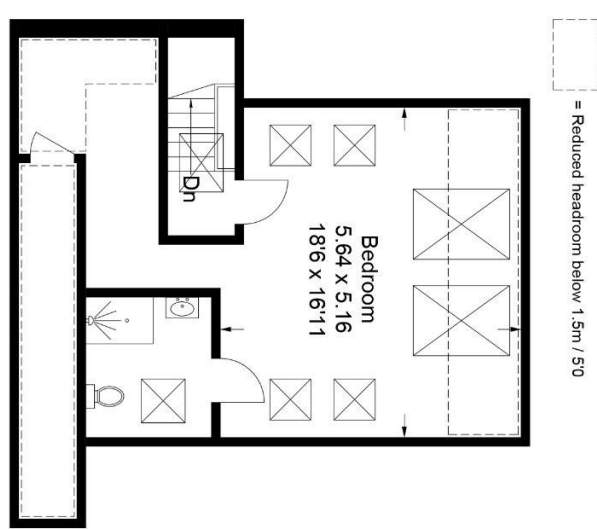
(Not Shown In Actual Location / Orientation)



Ground Floor



First Floor



Second Floor

This plan is for layout guidance only. Not drawn to scale unless stated. Windows and door openings are approximate. Whilst every care is taken in the preparation of this plan, please check all dimensions, shapes and compass bearings before making any decisions reliant upon them.
 © CJ Property Marketing Ltd

For appointments to view please call David Charles 020 8866 0222

All measurements are taken manually and whilst every care is taken with their accuracy they must be considered approximate and should not be relied upon when purchasing carpets or furniture. No responsibility is taken for any error, omission or misunderstanding in these particulars which do not constitute an offer or contract. Services and appliances have not been tested and therefore no warranty is offered on their operational condition.