



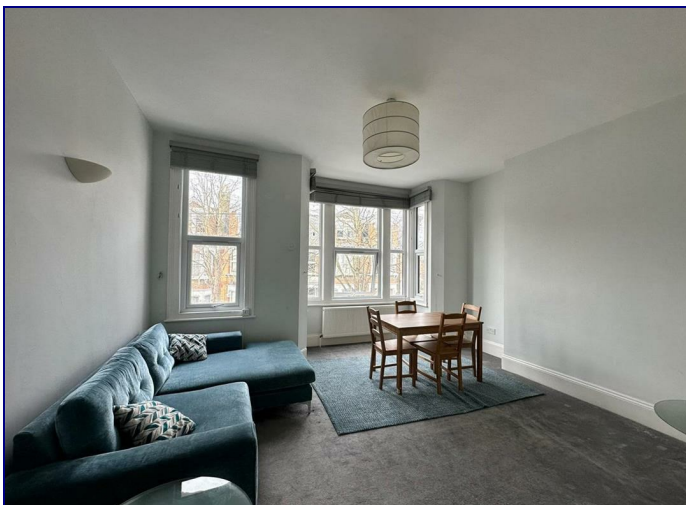
www.kings-group.net


248 Hoe Street
Walthamstow E17 3AX
Tel: 020 8521 1122


Cleveland Park Avenue, London, E17 7BP
£1,800 Per Month

This stunning two bedroom first floor period flat is perfectly located virtually next to Walthamstow Central and Walthamstow market. The flat offers bright and spacious living accommodation throughout. A lovely modern fully fitted kitchen diner with appliances and a recently fitted bathroom suite with a shower over the bath.

Call now for an immediate viewing.



Energy Efficiency Rating		
	Current	Potential
<i>Vary energy efficient - lower running costs</i>		
(92 plus) A		
(81-91) B		
(69-80) C		
(55-68) D		
(39-54) E		
(21-38) F		
(1-20) G		
<i>Not energy efficient - higher running costs</i>		
England & Wales	EU Directive 2002/91/EC	

Environmental Impact (CO ₂) Rating		
	Current	Potential
<i>Vary environmentally friendly - lower CO₂ emissions</i>		
(92 plus) A		
(81-91) B		
(69-80) C		
(55-68) D		
(39-54) E		
(21-38) F		
(1-20) G		
<i>Not environmentally friendly - higher CO₂ emissions</i>		
England & Wales	EU Directive 2002/91/EC	





Associated Offices in London, Essex and Hertfordshire
Kings Head Office Tudor Lodge, Burton Lane, Goffs Oak, Hertfordshire EN7 6SY Tel: 01707-872000

