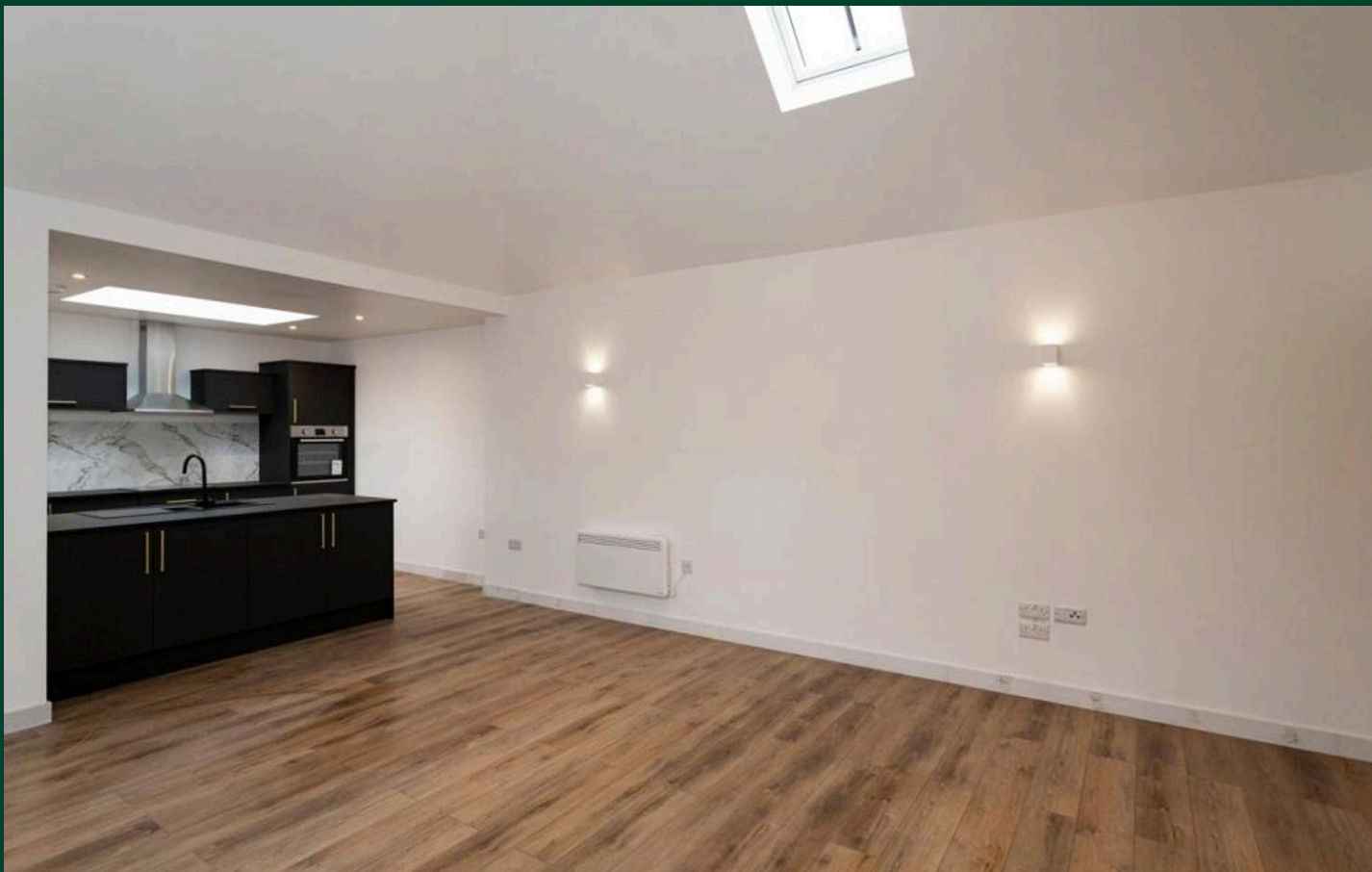




The Crown, Alton Road, Odiham
Odiham

McCarthy
Holden

Offers Over £300,000



4 The Crown, Alton Road, Odiham

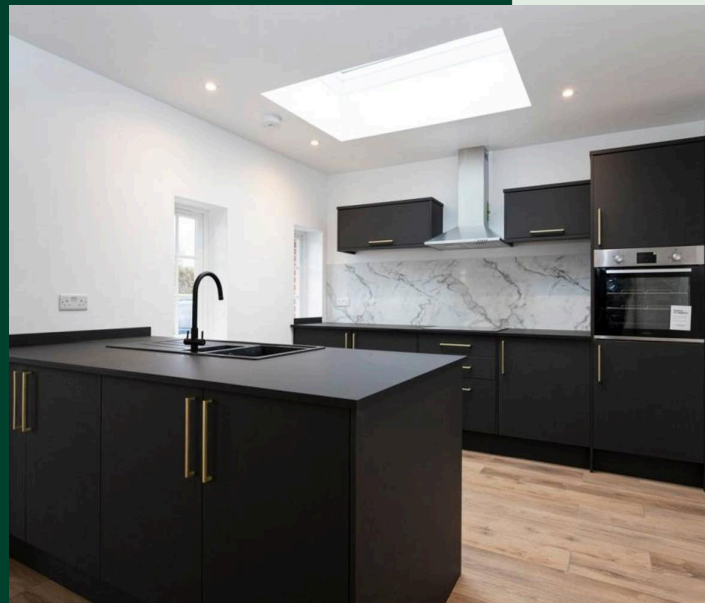
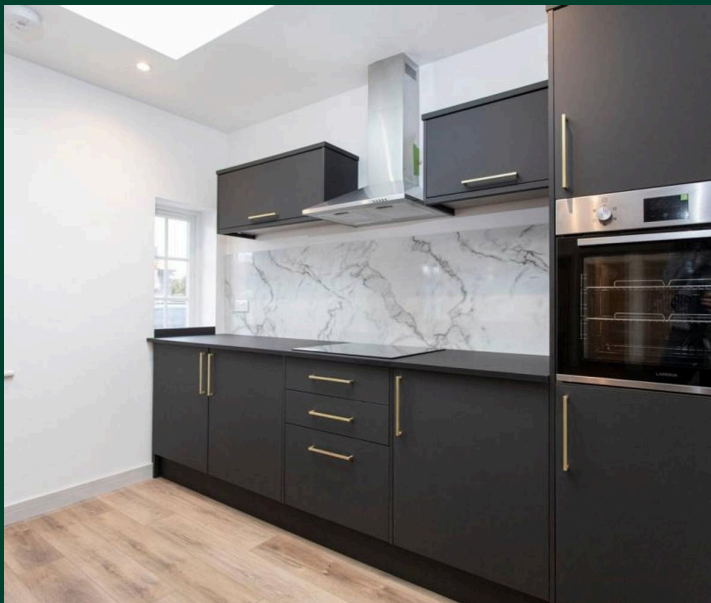
This impressive one bedroom property is situated within close proximity of the highly sought-after village of Odiham and its array of amenities. It is available with no onward chain.

Council Tax band: C

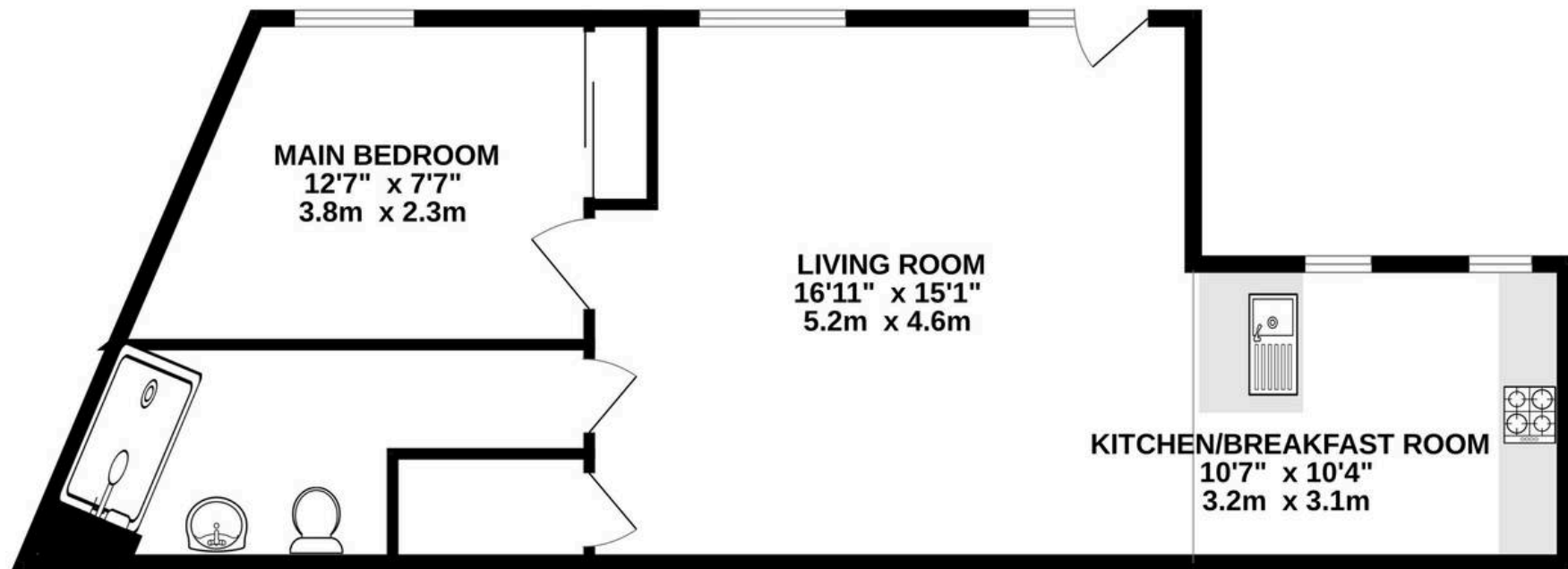
Tenure: Freehold

EPC Energy Efficiency Rating: E

- Close Proximity of Odiham Village Center
- Open Plan Kitchen/Dining/Living Room
- Mezzanie Area
- Shower Room
- Allocated Parking & Visitor Parking
- No Onward Chain



GROUND FLOOR
554 sq.ft. (51.5 sq.m.) approx.



TOTAL FLOOR AREA : 554 sq.ft. (51.5 sq.m.) approx.

Whilst every attempt has been made to ensure the accuracy of the floorplan contained here, measurements of doors, windows, rooms and any other items are approximate and no responsibility is taken for any error, omission or mis-statement. This plan is for illustrative purposes only and should be used as such by any prospective purchaser. The services, systems and appliances shown have not been tested and no guarantee as to their operability or efficiency can be given.

Made with Metropix ©2026



McCarthy Holden Odiham

McCarthy Holden, 95 High Street - RG29 1LA

01256 704851 • odiham@mccarthyholden.co.uk • www.mccarthyholden.co.uk

These particulars are provided in good faith under the Consumer Protection from Unfair Trading Regulations 2008 and are for guidance only. They do not form part of any contract. No survey has been carried out, and services or fittings have not been tested. Photos and floor plans are illustrative; items shown may not be included. Buyers/tenants must verify all details. Fixtures & Fittings: Excluded unless specifically stated.