



****TRADITIONAL STONE THROUGH TERRACE**POPULAR
LOCATION**** Ideal first time buyers or investment property.
Beautifully presented, well maintained Two Bedrooms, Lounge,
Kitchen and storage cellars property with front patio.



MARTIN & CO

Poplar Square, Farsley, LS28 5AW

£180,000 OFFERS OVER

Two bedroom mid stone terraced situated close to the excellent amenities, with great transport links at the new Pudsey train stations with easy access to Leeds and Bradford town centre.

Ready to move into, the property has a separate entrance hallway, with stairs leading to the first floor landing, then you enter into the beautifully designed lounge area that is perfect for a cosy evening on an autumn evening, following on you have the kitchen that benefits from wall and base units, gas hob with electric oven and stainless steel sink that looks out of the back of the home with a great view to the top of the road. From the kitchen you do access the cellar.

Going upstairs in the property you have one double bedroom and a single bedroom that is multi functional, where you could use it as a offices or a nursery. On this floor you also have a beautiful four piece bathroom suite comprising of; corner bath, shower cubical, WC and wash hand basin. Outside you have a beautiful courtyard that's perfect for alfresco dining on a nice summer evening..





**MID-
TERRACE**



2



1



1



**ON
STREET**



**Council
Band - B**



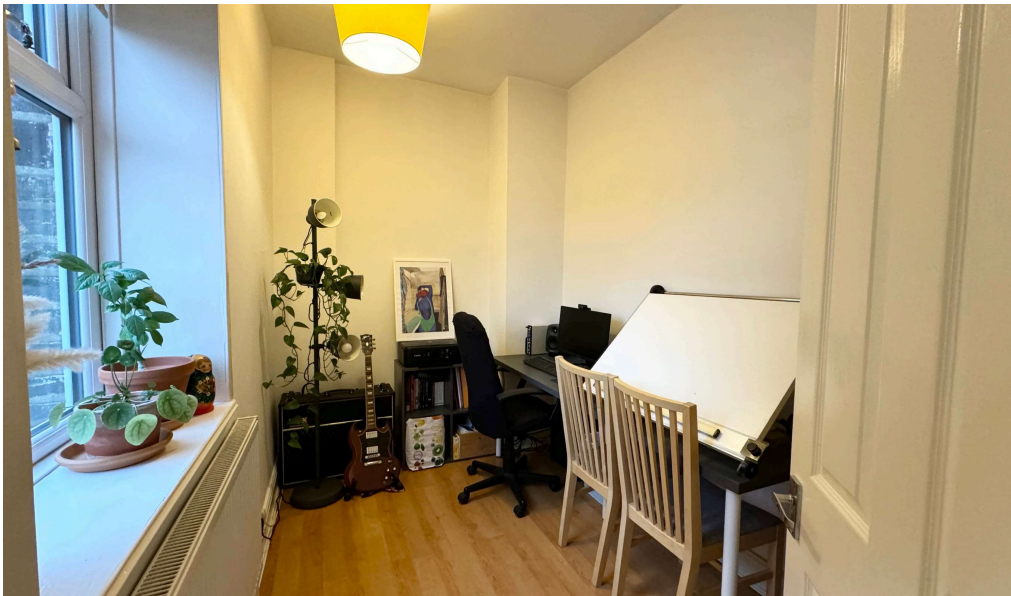
D



FREEHOLD



741 sqft



Farsley is the place to be right now. It is a small but increasingly popular Village from which commuting is straightforward, by public transport with buss routes or by car with the A6120 and A647 are both on hand and provide major links to the motorway networks. Just a short distance away is the Owlcotes Centre at Pudsey where you will find a Marks & Spencer, Asda superstore, and other outlets, there is also New Pudsey train station that is a short journey from the Owlcotes. The bus services are frequent from the village, getting you into Leeds & Bradford City centres. There is a good selection of shops, pubs and eateries in Farsley and schools are also popular. The neighbouring villages of Pudsey and Horsforth are only a short distance away and also offer a comprehensive range of facilities. A recreation/playground is within a short walk, ideal for children and pets.

