

ON HOLD



Broadgate Walk, Horsforth

3 Bedrooms, 1 Bathroom, Semi-Detached House

Guide Price £270,000



Broadgate Walk, Horsforth

3 Bedrooms, 1 Bathroom

Guide Price £270,000

FRONT OF PROPERTY Front of property with front garden and driveway.

LIVING ROOM Through living room with access to kitchen and hallway.

KITCHEN Breakfast kitchen with under stairs storage cupboard.

HALLWAY Front entrance hall with stairs to first floor.

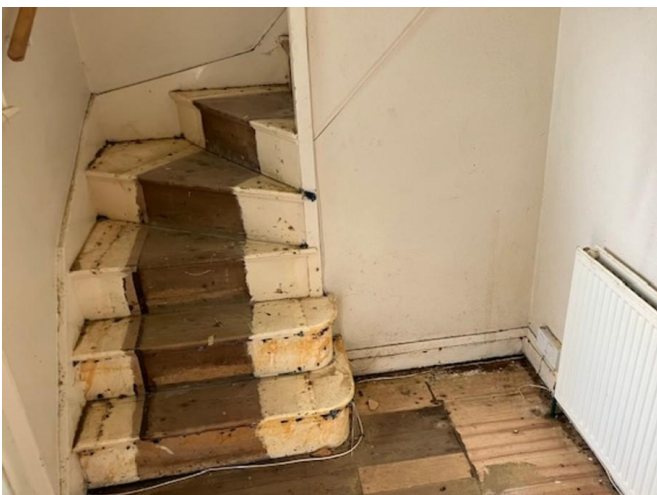
DOUBLE BEDROOM Spacious rear double bedroom.

DOUBLE BEDROOM Double bedroom to front elevation.

BEDROOM Third bedroom good sized single.

BATHROOM Bathroom with three piece suite.

REAR GARDEN Rear garden with Garage.

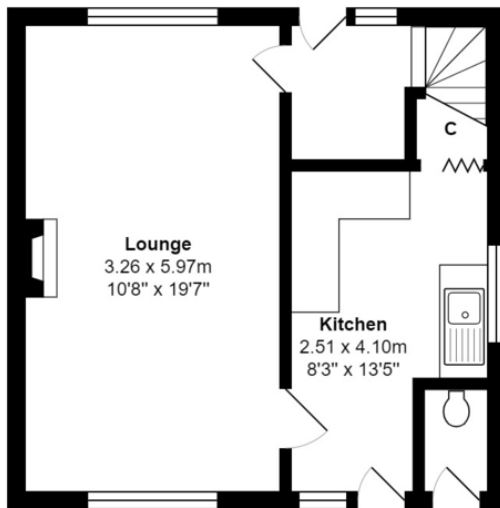




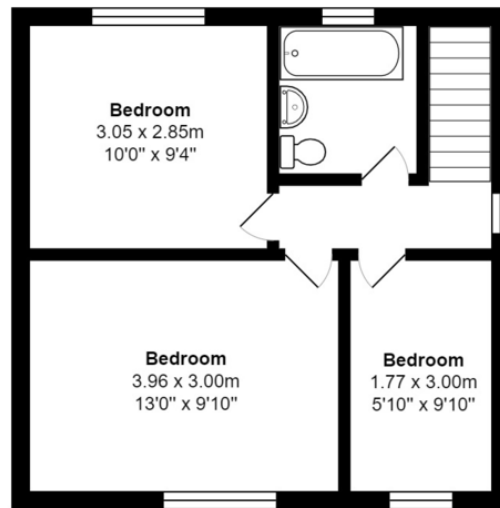


%epcGraph_c_1_210%





Ground Floor



First Floor

Total Area: 70.8 m² ... 762 ft²

All measurements are approximate and for display purposes only

Martin & Co Leeds Horsforth

93 New Road Side • Horsforth • Leeds • LS18 4QD
T: 0113 258 8664 • E: horsforth@martinco.com

0113 258 8664

<http://www.martinco.com>



Accuracy: References to the Tenure of a Property are based on information supplied by the Seller. The Agent has not had sight of the title documents. A Buyer is advised to obtain verification from their Solicitor. Items shown in photographs including but not limited to carpets, fixtures and fittings are not included unless specifically mentioned within the sales particulars. They may however be available by separate negotiation. Buyers must check the availability of any property and make an appointment to view before embarking on any journey to see a property. No person in the employment of the agent has any authority to make any representation about the property, and accordingly any information given is entirely without responsibility on the part of the agents, sellers(s) or lessors(s). Any property particulars are not an offer or contract, nor for part of one. **Sonic / Laser Tape:** Measurements taken using a sonic / Laser tape measure may be subject to a small margin of error. **All Measurements:** All Measurements are Approximate. **Services Not tested:** The Agent has not tested any apparatus, equipment, fixtures and fittings or services and so cannot verify that they are in working order or fit for the purpose. A Buyer is advised to obtain verification from their Solicitor or Surveyor.