

ON HOLD



Alexandra Road, Shipley

4 Bedrooms, 4 Bathroom, Mid Terraced House

Guide Price £250,000





- HMO with rental £2300.00 pcm
- 10 % Yield plus.
- Well presented Mid terraced property
- Gas central heating.
- Upvc double glazing.
- Currently tenanted.
- Front and rear garden.

%epcGraph_c_1_331%

LIVING ROOM 12' 1" x 14' 1" (3.7m x 4.3m) Good sized living room with feature fireplace.

DINING KITCHEN 16' 0" x 14' 5" (4.9m x 4.4m) Spacious dining kitchen with utility area.

BEDROOM 16' 0" x 14' 1" (4.9m x 4.3m) Bedroom with en-suite shower room.

BEDROOM 13' 9" x 8' 10" (4.2m x 2.7m) Bedroom with en-suite shower room.

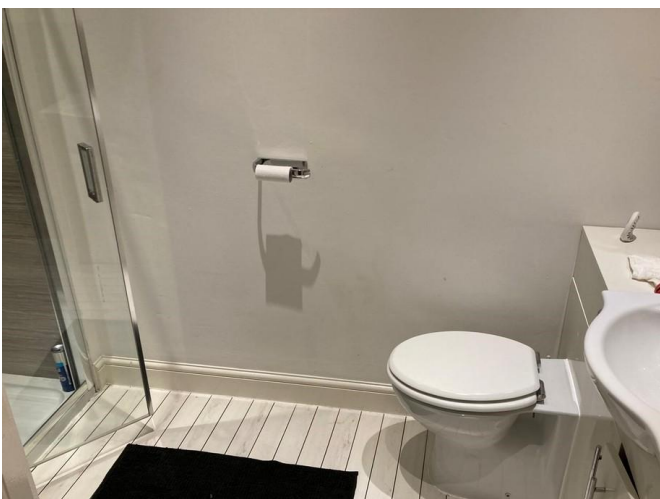
BEDROOM 16' 0" x 14' 1" (4.9m x 4.3m) Bedroom with en-suite shower room.

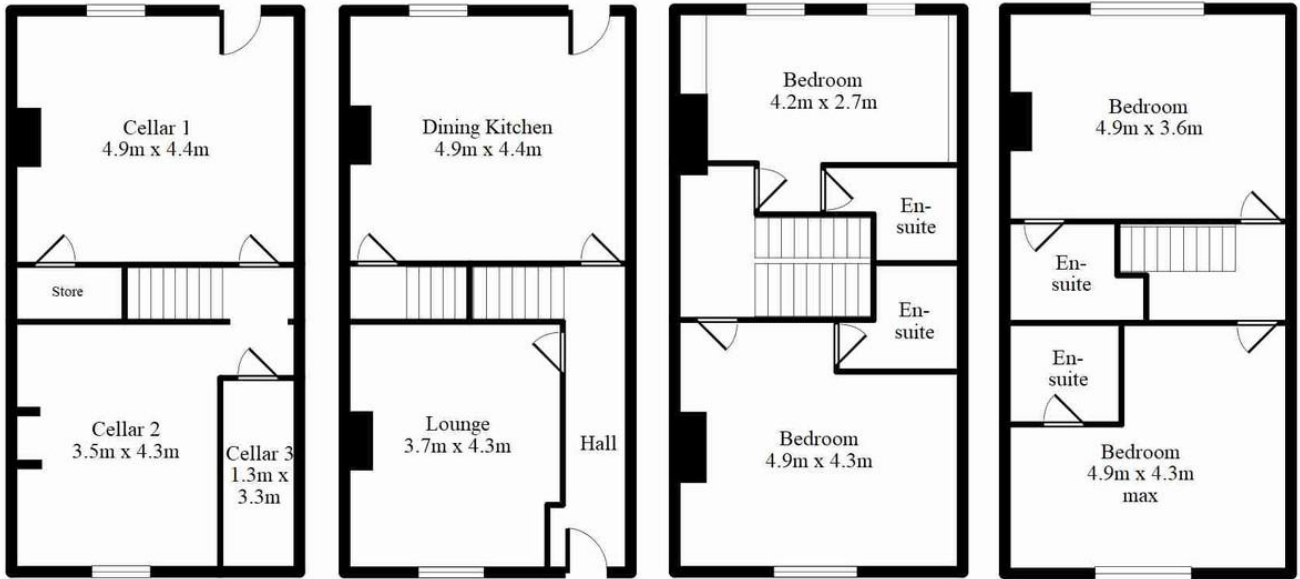
BEDROOM 16' 0" x 11' 9" (4.9m x 3.6m) Bedroom with en-suite shower room.

BASEMENT AREA 16' 0" x 14' 5" (4.9m x 4.4m) Basement with potential to create further living space.

BASEMENT 11' 5" x 14' 1" (3.5m x 4.3m) Basement area 2.

GARDEN Garden to front and rear of property. Parking space to rear.





Every attempt has been made to ensure this floor plan is accurate, however their accuracy is not guaranteed. The floorplan is for illustrative purposes and should be used in that context. GFPMs 2024

Martin & Co Leeds Horsforth **0113 258 8664**
 93 New Road Side • Horsforth • Leeds • LS18 4QD
 T: 0113 258 8664 • E: horsforth@martinco.com <http://www.martinco.com>



Accuracy: References to the Tenure of a Property are based on information supplied by the Seller. The Agent has not had sight of the title documents. A Buyer is advised to obtain verification from their Solicitor. Items shown in photographs including but not limited to carpets, fixtures and fittings are not included unless specifically mentioned within the sales particulars. They may however be available by separate negotiation. Buyers must check the availability of any property and make an appointment to view before embarking on any journey to see a property. No person in the employment of the agent has any authority to make any representation about the property, and accordingly any information given is entirely without responsibility on the part of the agents, sellers(s) or lessors(s). Any property particulars are not an offer or contract, nor for mpart of one. **Sonic / laser Tape:** Measurements taken using a sonic / laser tape measure may be subject to a small margin of error. **All Measurements:** All Measurements are Approximate. **Services Not tested:** The Agent has not tested any apparatus, equipment, fixtures and fittings or services and so cannot verify that they are in working order or fit for the purpose. A Buyer is advised to obtain verification from their Solicitor or Surveyor.

