



Main Road | Rugeley | WS15 1DU

Offers In The Region Of £360,000

 **Webbs**
estate agents

Summary

Webbs Estate Agents are pleased to present this spacious and well-maintained three-bedroom semi-detached home, occupying a generous plot in the heart of Brereton – a fantastic opportunity for families or buyers seeking room to grow.

This traditional property offers flexible and well-proportioned living space throughout, including an entrance porch and hallway, two reception rooms, a fitted kitchen, utility/cloakroom, three double bedrooms, and a family bathroom.

Outside, the home benefits from a large rear garden, perfect for families or keen gardeners, and the rare advantage of two garages, offering excellent storage or workshop potential.

Ideally located within walking distance of local schools, amenities and transport links, this home offers a great balance of lifestyle, space and location.

Early viewing is highly recommended to appreciate the size and scope on offer.

Key Features

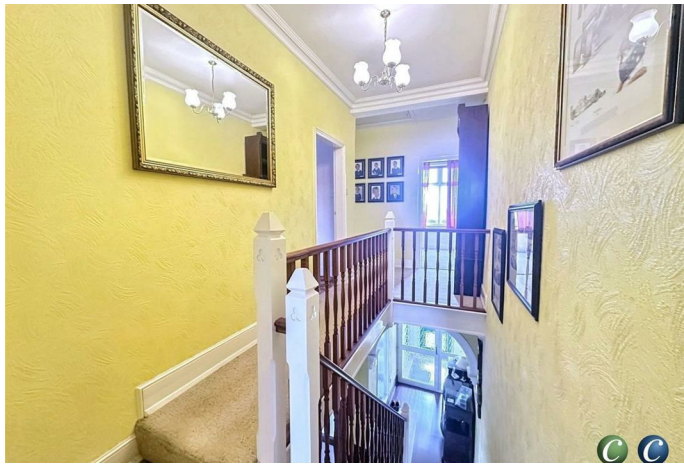
- LARGE PLOT
- THREE DOUBLE BEDROOMS
- LARGE KITCHEN
- FAMILY BATHROOM
- LARGE DRIVEWAY
- TRADITIONAL HOME
- TWO RECEPTION ROOMS
- DOWNSTAIRS CLOAKROOM
- TWO DOUBLE GARAGES
- VIEWING ESSENTIAL

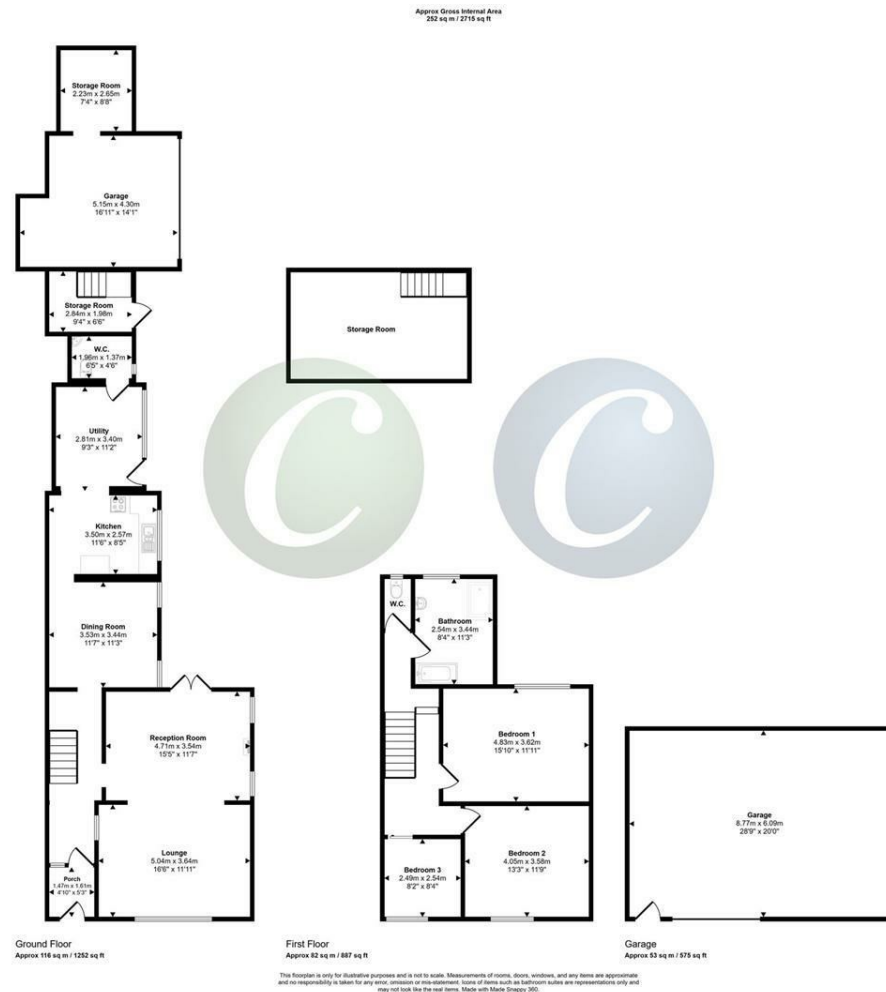
Rooms and Dimensions

Identification Checks (R)

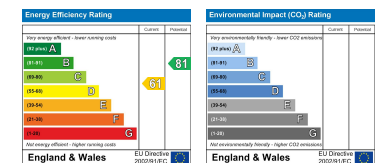
Sales Details (R)







Webbs Estate Agents - endeavour to maintain accurate depictions of properties in Virtual Tours, Floor Plans and descriptions, however, these are intended only as a guide and purchasers must satisfy themselves by personal inspection.



Globe House Upper Brook Street, Rugeley, Staffordshire, WS15 2DN

Tel: 01889 583377 | Email: rugeley@webbsea.co.uk | www.webbestateagents.co.uk

