



East Butts Road | Etching Hill, Rugeley | WS15 2LU

Offers In The Region Of £640,000



Summary

**** OUTSTANDING DETACHED FAMILY HOME ** HIGHLY SOUGHT AFTER LOCATION ** INTERNAL VIEWING IS ESSENTIAL ****

WEBBS ESTATE AGENTS are pleased to market this individually designed detached property that has undergone a programme of remodelling and refurbishment by the current sellers. UPVC double-glazed and Gas centrally heated. Large Entrance Hall, Guest Cloakroom, Study, Large Sitting Room and Open plan Living Dining Kitchen. Large Landing with Master Bedroom having Ensuite Shower Room, Three Further Bedrooms and Family Bathroom. Extensive parking with access to a TANDEM COVERED CARPORT, then onto the SINGLE GARAGE. Beautiful landscaped rear garden.

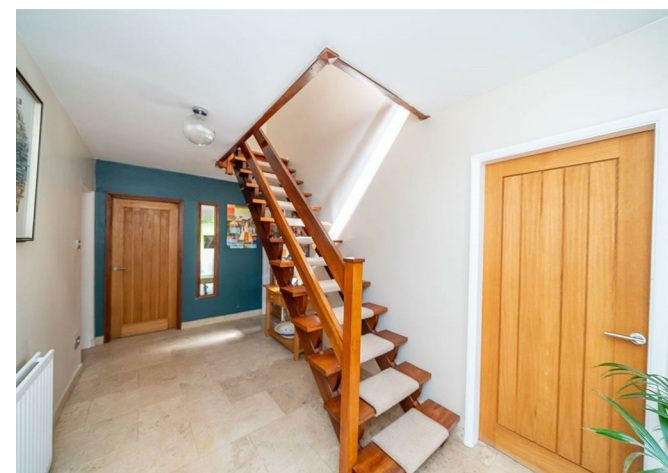
Key Features

- ONE OF THE MOST SOUGHT AFTER AREAS OF ETCHINGHILL
- VIEWING ABSOLUTELY ESSENTIAL TO APPRECIATE THE ACCOMMODATION ON OFFER
- INDIVIDUALLY DESIGNED AND REMODELLED BY THE CURRENT OWNERS

Rooms and Dimensions

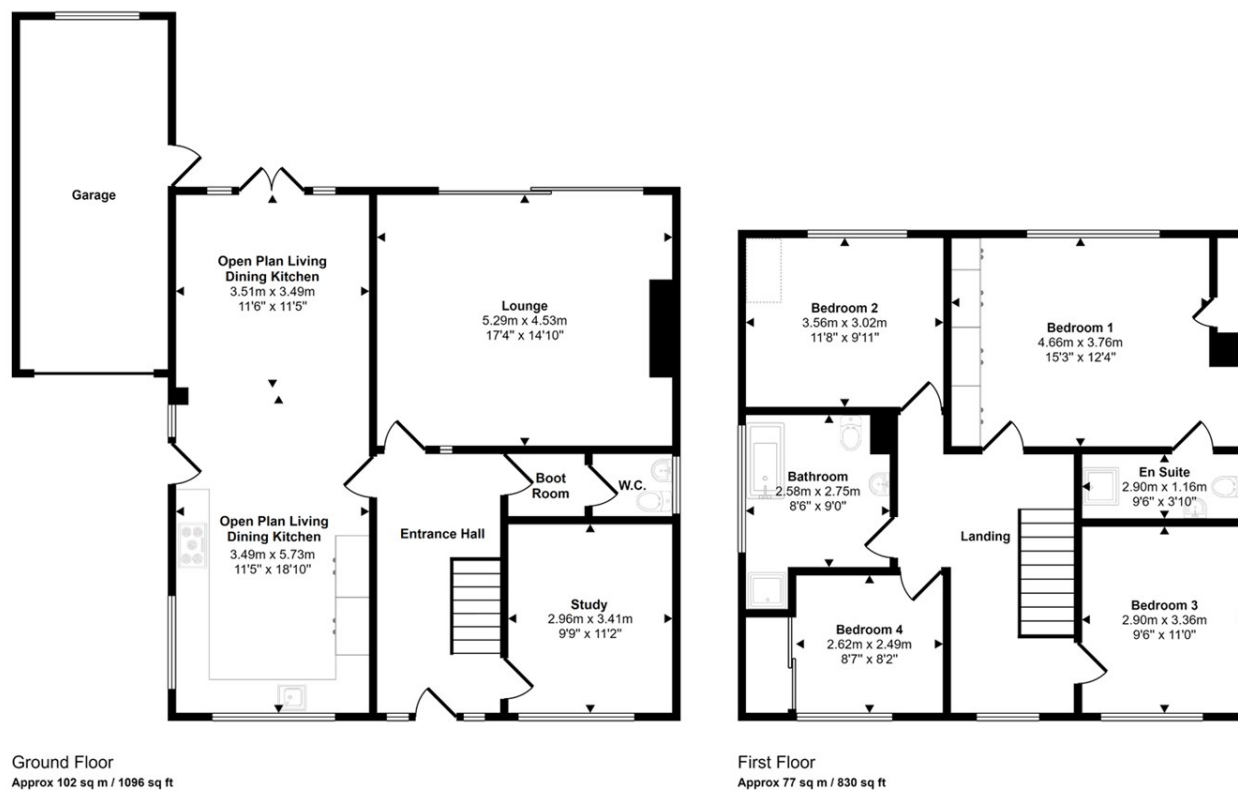
Full Description

Identification Checks (R)



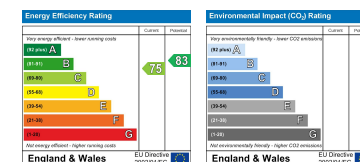


Approx Gross Internal Area
179 sq m / 1926 sq ft



This floorplan is only for illustrative purposes and is not to scale. Measurements of rooms, doors, windows, and any items are approximate and no responsibility is taken for any error, omission or mis-statement. Icons of items such as bathroom suites are representations only and may not look like the real items. Made with Made Snappy 360.

Webbs Estate Agents - endeavour to maintain accurate depictions of properties in Virtual Tours, Floor Plans and descriptions, however, these are intended only as a guide and purchasers must satisfy themselves by personal inspection.



Globe House Upper Brook Street, Rugeley, Staffordshire, WS15 2DN

Tel: 01889 583377 | Email: rugeley@webbsea.co.uk | www.webbestateagents.co.uk

