



Brereton Manor Court | Brereton, Rugeley | WS15 1EF
Offers In The Region Of £430,000

 **Webbs**
estate agents

Summary

WEBBS ESTATE AGENTS have the pleasure of offering this spacious four-bedroom detached family home, ideally situated in the highly sought-after area of Brereton, Rugeley. Tucked away on the popular Brereton Manor Court, this well-presented property offers generous internal accommodation, a good-sized rear garden and a double garage, making it the perfect home for growing families. Location & Lifestyle Located close to local amenities, well-regarded schools, and offering excellent transport links, this home provides the ideal balance of convenience and comfort.

Key Features

- DETACHED FAMILY HOME
- SOUGHT AFTER LOCATION
- KITCHEN
- ENSUITE
- DRIVEWAY
- FOUR BEDROOMS
- TWO RECEPTION ROOMS
- UTILITY ROOM
- REAR GARDEN
- DOUBLE GARAGE

Rooms and Dimensions

Full Description

THROUGH HALLWAY

GUEST WC

LOUNGE

16'11" x 10'1" (5.16m x 3.08m)

SITTING ROOM

12'2" x 10'2" (3.71m x 3.10m)

DINING ROOM

12'8" x 10'1" (3.87m x 3.08m)

KITCHEN

9'6" x 8'4" (2.91m x 2.55m)

UTILITY ROOM

LANDING

BEDROOM ONE

10'4" x 10'3'9" (3.16m x 3.09m)

ENSUITE SHOWER ROOM

BEDROOM TWO

10'7" x 9'8" (3.23m x 2.97m)

BEDROOM THREE

10'7" x 9'7" (3.24m x 2.93m)

BEDROOM FOUR

10'0" x 7'3" (3.05m x 2.21m)

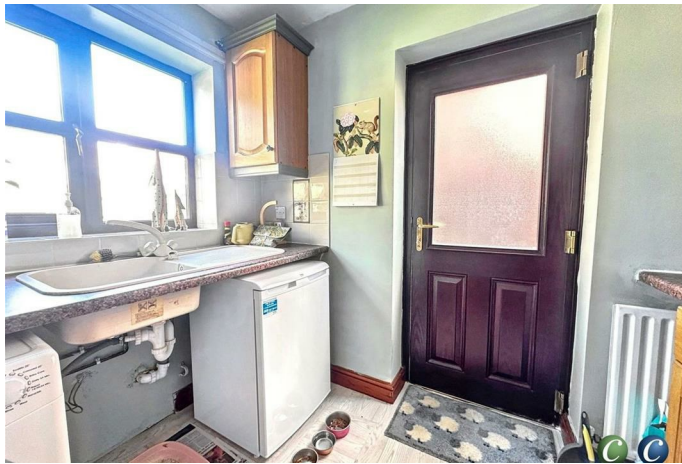
FAMILY BATHROOM

LANDSCAPED GARDENS

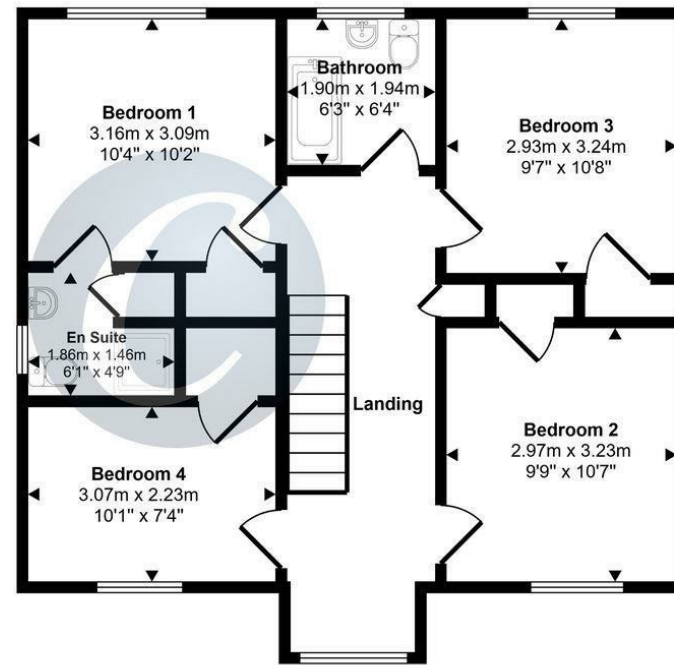
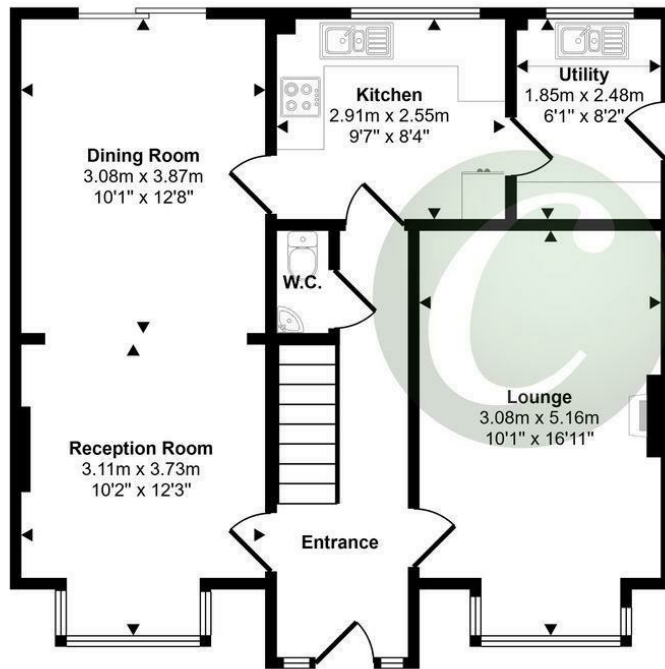
DRIVEWAY

Identification Checks (R)





Approx Gross Internal Area
122 sq m / 1315 sq ft



This floorplan is only for illustrative purposes and is not to scale. Measurements of rooms, doors, windows, and any items are approximate and no responsibility is taken for any error, omission or mis-statement. Icons of items such as bathroom suites are representations only and may not look like the real items. Made with Made Snappy 360.

Webbs Estate Agents - endeavour to maintain accurate depictions of properties in Virtual Tours, Floor Plans and descriptions, however, these are intended only as a guide and purchasers must satisfy themselves by personal inspection.

