



Rugeley Road | Rugeley | WS15 4AY

Offers Over £160,000



Summary

**** NO CHAIN ** WELL PRESENTED PARK HOME ** VIEWING ADVISED ** MODERN OPENPLAN LIVING AND KITCHEN ** TWO BEDROOMS ** BATHROOM ** GARDENS ** DRIVEWAY ****

WEBBS ESTATE AGENTS have pleasure in offering this very well presented and deceptively spacious two-bedroom park home, located on the popular Lower Lodge Residential Park in the desirable area of Armitage, Rugeley. Situated within easy reach of local amenities, convenient transport links, and just a short distance from both Rugeley and the historic cathedral city of Lichfield, this property offers comfortable and accessible living in a peaceful residential park setting.

Key Features

- WELL PRESENTED PARK HOME
- OPEN PLAN LOUNGE KITCHEN DINER
- LARGE BLOCK PAVED DRIVEWAY
- VIEWING ADVISED
- TWO BEDROOMS
- SHOWER ROOM
- CLOSE TO AMENITIES

Rooms and Dimensions

Full Description

THROUGH HALLWAY

OPEN PLAN LIVING

18'8" x 13'1" (5.69m x 3.99m)

LOUNGE DINER

()

KITCHEN AREA

BEDROOM ONE

13'1" x 8'2" (3.99m x 2.51m)

BEDROOM TWO

9'7" x 5'9" (2.92m x 1.75m)

BATHROOM

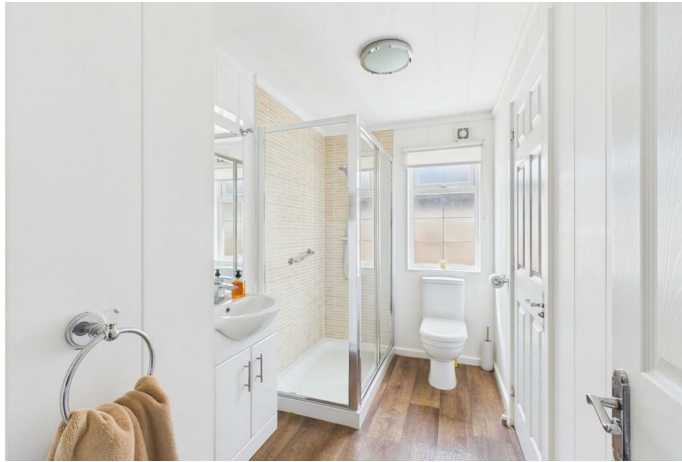
GARDENS

DRIVEWAY

The Mobile Homes Act 1983

Identification Checks (R)







Webbs Estate Agents - endeavour to maintain accurate depictions of properties in Virtual Tours, Floor Plans and descriptions, however, these are intended only as a guide and purchasers must satisfy themselves by personal inspection.