



The Laurels | Rugeley | WS15 1BE
Offers In The Region Of £165,000

 **Webbs**
estate agents

Summary

**** OVER 60 COMPLEX ** FABULOUS TERRACED BUNGALOW ** WELL PRESENTED THROUGHOUT ** VIEWING ADVISED ** POPULAR LOCATION ** TWO BEDROOMS ** SHOWER ROOM ** MODERN KITCHEN ** LOUNGE DINER ** ALLOCATED & VISITOR PARKING ** FRONT & REAR GARDENS ****

WEBBS ESTATE AGENTS have the pleasure of offering this lovely terraced bungalow, conveniently situated in a lovely development, being close to all local amenities, bus routes and Rugeley Town Centre. Briefly comprising: entrance hallway, lounge diner, modern kitchen, inner hallway, two bedrooms and a shower room. Externally, there are front and rear gardens, communal gardens, allocated and visitor parking.

There is a service charge payable of £294.29 PCM, the scheme is designed for independent retirement living no care or assistance is provided by the management company.

Key Features

- PURPOSE BUILT DEVELOPMENT FOR THE OVER 60'S
- TWO BEDROOMS
- MODERN KITCHEN
- LOUNGE
- BATHROOM
- RESIDENTS PARKING
- COMMUNAL GARDENS
- CLOSE TO AMENITIES
- SPACIOUS ACCOMMODATION
- VIEWING ADVISED

Rooms and Dimensions

Hallway

Living/ Dining Room

17'10 x 11'0 (5.44m x 3.35m)

Kitchen

11'2 x 8'5 (3.40m x 2.57m)

Bedroom 1

11'8 x 11'7 (3.56m x 3.53m)

Bedroom 2

6'1 x 11'6 (1.85m x 3.51m)

Bathroom

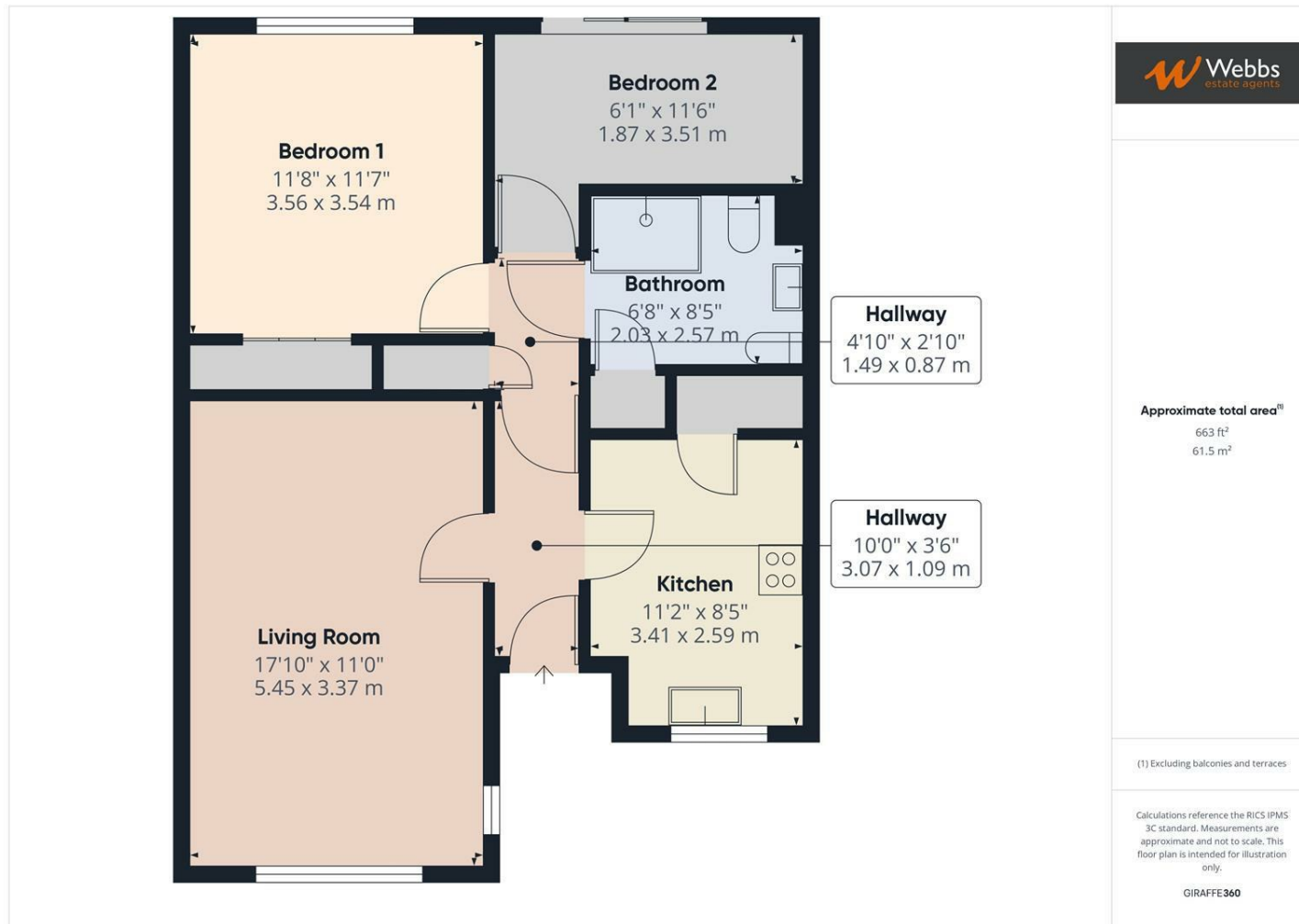
6'8 x 8'5 (2.03m x 2.57m)

Identification Checks (R)

AGENT NOTES







Webbs Estate Agents - endeavour to maintain accurate depictions of properties in Virtual Tours, Floor Plans and descriptions, however, these are intended only as a guide and purchasers must satisfy themselves by personal inspection.

