



**Lovett Court | Rugeley | WS15 2QD**  
Offers In The Region Of £170,000

 **Webbs**  
estate agents

## Summary

\*\* NO UPWARD CHAIN \*\* POPULAR LOCATION \*\* THREE BEDROOMS \*\* CLOSE TO AMENITIES \*\* LOUNGE DINING ROOM \*\* KITCHEN \*\* REAR GARDEN \*\* VIEWING ESSENTIAL \*\* IDEAL FOR FIRST TIME BUYERS OR INVESTORS \*\*

WEBBS ESTATE AGENTS are pleased to market this spacious three bedroom end terraced property, situated on the popular Springfields Estate on Lovett Court. Viewing of the property is advised to appreciate the size and space on offer. The property is located close to amenities, schools and useful transport links. The internal accommodation briefly comprises; entrance porch, hallway, lounge dining room, kitchen, three bedrooms and a family bathroom. The property also boasts a good size rear garden.

## Key Features

- POPULAR LOCATION
- LOUNGE DINING ROOM
- REAR GARDEN
- VIEWING ADVISED
- THREE BEDROOMS
- KITCHEN
- CLOSE TO AMENITIES
- NO UPWARD CHAIN

## Rooms and Dimensions

### Entry Porch

### Hallway

### Living Room

20'6 x 10'8 (6.25m x 3.25m)

### Kitchen

13'0 x 8'6 (3.96m x 2.59m)

### Bedroom 1

11'8 x 10'6 (3.56m x 3.20m)

### Bedroom 2

8'6 x 10'0 (2.59m x 3.05m)

### Bedroom 3

5'8 x 8'11 (1.73m x 2.72m)

### Bathroom

5'4 x 7'7 (1.63m x 2.31m)

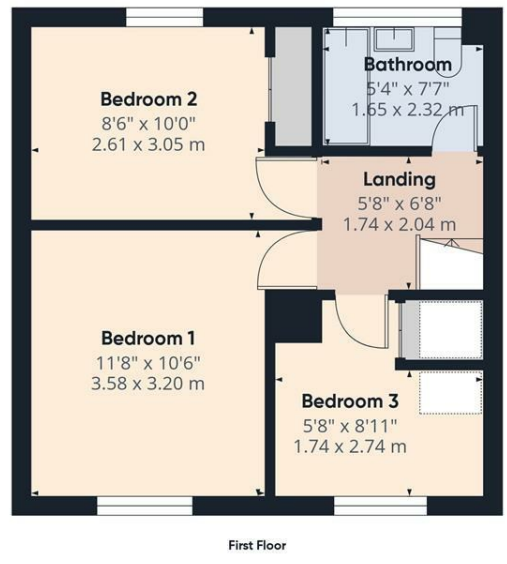
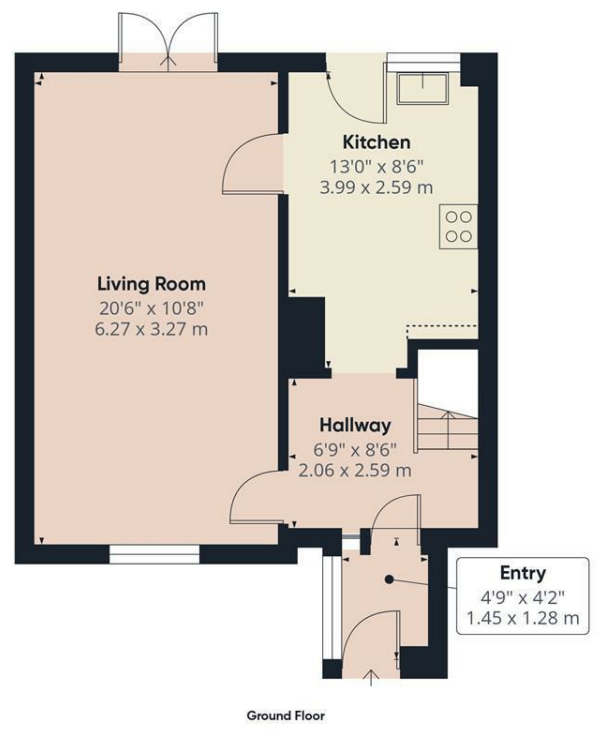
### AGENTS NOTES

### IDENTIFICATION CHECKS (R)

### Agents Notes







Approximate total area<sup>0</sup>  
 774 ft<sup>2</sup>  
 72 m<sup>2</sup>

Reduced headroom  
 2 ft<sup>2</sup>  
 0.2 m<sup>2</sup>

(1) Excluding balconies and terraces

Reduced headroom  
 ..... Below 5 ft/1.5 m

Calculations reference the RICS IPMS 3C standard. Measurements are approximate and not to scale. This floor plan is intended for illustration only.

GIRAFFE360

Webbs Estate Agents - endeavour to maintain accurate depictions of properties in Virtual Tours, Floor Plans and descriptions, however, these are intended only as a guide and purchasers must satisfy themselves by personal inspection.

