



Eaton Croft | Rugeley | WS15 2BP  
Offers In The Region Of £510,000

 **Webbs**  
estate agents



# Summary

\*\* EXECUTIVE DETACHED FAMILY HOME \*\* CORNER PLOT \*\* DETACHED DOUBLE GARAGE \*\* FIVE BEDROOMS \*\* TWO RECEPTION ROOMS \*\* OPEN PLAN KITCHEN DINING ROOM \*\* CONSERVATORY \*\* TWO ENSUITES \*\* CLOSE TO AMENITIES \*\* VIEWING ESSENTIAL \*\*

WEBBS ESTATE AGENTS are pleased to market this executive family home which offers a rare opportunity to secure a spacious and beautifully presented property on a generous plot, with room to grow. Early viewing is strongly recommended to fully appreciate the scale, layout, and quality of accommodation on offer.

Set behind secure electric gates and occupying a substantial corner plot, this impressive five-bedroom executive detached home offers spacious and versatile living accommodation, ideal for a growing family.

# Key Features

- EXECUTIVE DETACHED FAMILY HOME
- TWO ENSUITES
- TWO RECEPTION ROOMS
- CONSERVATORY
- CLOSE TO AMENITIES
- FIVE BEDROOMS
- LARGE CORNER PLOT
- OPEN PLAN KITCHEN DINING ROOM
- DETACHED DOUBLE GARAGE
- VIEWING ESSENTIAL

# Rooms and Dimensions

## ENTRANCE HALLWAY

## LIVING ROOM

16'6" x 11'7" (5.03 x 3.55)

## STUDY

7'8" x 10'2" (2.36 x 3.10)

## GUEST WC

## UTILITY ROOM

5'2" x 6'9" (1.59 x 2.08)

## OPEN PLAN KITCHEN/DINING ROOM

11'8" x 29'5" (3.58 x 8.97)

## CONSERVATORY

10'8" x 16'0" (3.26 x 4.88)

## LANDING

## BEDROOM ONE

11'9" x 11'6" (3.60 x 3.51)

## ENSUITE

## BEDROOM TWO

10'8" x 11'6" (3.26 x 3.53)

## BEDROOM THREE

7'11" x 10'2" (2.42 x 3.12)

## BEDROOM FOUR

10'7" x 8'7" (3.25 x 2.62)

## BEDROOM FIVE

7'5" x 8'7" (2.28 x 2.62)

## BATHROOM

## DOUBLE GARAGE

## REAR GARDEN

## IDENTIFICATION CHECKS - C

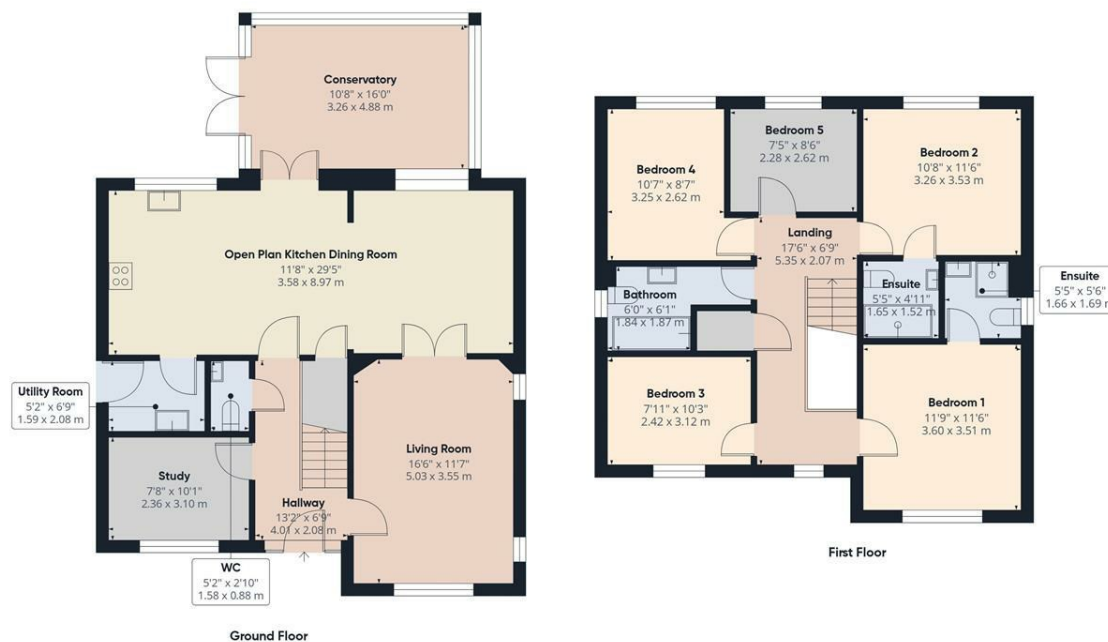
## AGENTS NOTES

## AGENTS NOTES









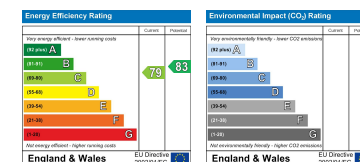
Approximate total area<sup>(1)</sup>  
1657 ft<sup>2</sup>  
153.9 m<sup>2</sup>

(1) Excluding balconies and terraces

Calculations reference the RICS IPMS 3C standard. Measurements are approximate and not to scale. This floor plan is intended for illustration only.

GIRAFFE360

Webbs Estate Agents - endeavour to maintain accurate depictions of properties in Virtual Tours, Floor Plans and descriptions, however, these are intended only as a guide and purchasers must satisfy themselves by personal inspection.



Globe House Upper Brook Street, Rugeley, Staffordshire, WS15 2DN

Tel: 01889 583377 | Email: [rugeley@webbsea.co.uk](mailto:rugeley@webbsea.co.uk) | [www.webbestateagents.co.uk](http://www.webbestateagents.co.uk)