



Shephard Close | Great Haywood, Stafford | ST18 0FN

Offers In Excess Of £800,000





# Summary

\*\* NO CHAIN \*\* MOTIVATED LEGALLY PREPARED SELLER \*\* SUBSTANIAL EXECUTIVE DETACHED HOME \*\* 5,500 SQ FT \*\* ANNEX POTENTIAL \*\* TRIPLE GARAGE \*\* EXCLUSIVE CUL DE SAC IN SOUGHT AFTER VILLAGE LOCATION \*\* SECURE GATED DRIVEWAY & GROUNDS \*\* INTERNAL VIEWING IS ESSENTIAL \*\*

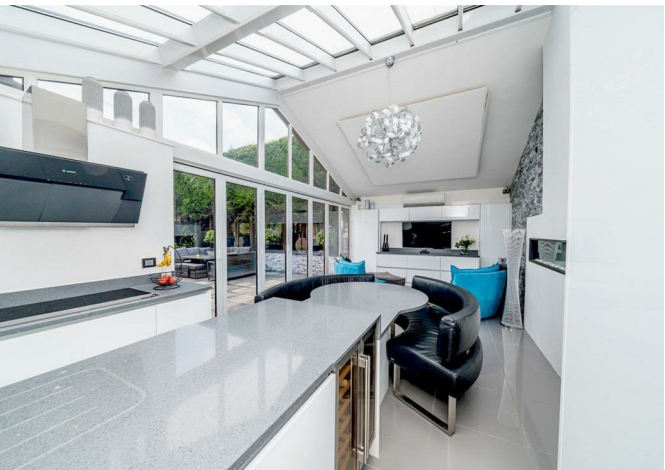
WEBBS ESTATE AGENTS are proud to present this OUTSTANDING, heavily extended and deceptively spacious executive family home, situated at the head of an exclusive cul de sac in the highly sought-after village of Great Haywood. This truly stunning home offers an exceptional 5,500 sq ft of flexible and beautifully presented living space spread across three impressive floors. Individually designed with both luxury and family living in mind, this home must be viewed to be fully appreciated and ideally suited to a multi-generational family seeking substantial and stylish living space in a tranquil yet well-connected location.

# Key Features

- EXECUTIVE DETACHED FAMILY HOME
- SEVEN DOUBLE BEDROOMS
- FOUR RECEPTION ROOMS
- SAUNA / GYM
- PRIVATE GATED DRIVEWAY
- NO UPWARD CHAIN
- FOUR BATHROOMS
- BILLIARDS ROOM
- LARGE FRONTAGE
- VIEWING ESSENTIAL

# Rooms and Dimensions

<b>SNUG</b> 17'10" x 11'9" (5.44m x 3.60m)	<b>BEDROOM THREE</b> 11'6" x 11'2" (3.53m x 3.42m)
<b>SPACOUS LOUNGE</b> 24'3" x 15'7" (7.40m x 4.77m)	<b>JACK &amp; JILL ENSUITE</b>
<b>PLAYROOM</b> 14'5" x 9'6" (4.40m x 2.91m)	<b>BEDROOM FOUR</b> 11'3" x 9'5" (3.45m x 2.89m)
<b>DINING ROOM</b> 11'11" x 11'3" max (3.65m x 3.44m max)	<b>TWO BATHROOMS</b>
<b>KITCHEN FAMILY ROOM</b> 41'2" x 12'4" max (12.56m x 3.77m max)	<b>BEDROOM FIVE</b> 12'6" x 10'10" (3.82m x 3.32m)
<b>BILLARD ROOM</b> 24'8" x 17'0" (7.54m x 5.20m)	<b>BEDROOM SIX</b> 11'9" x 8'0" (3.58m x 2.44m)
<b>GYMNASIUM</b> 24'7" x 13'1" (7.50m x 4.00m)	<b>STUDY / BEDROOM SEVEN</b> 8'0" x 9'6" (2.46m x 2.91m)
<b>SAUNA - SHOWER - CHANGING ROOMS</b>	<b>BEDROOM EIGHT</b> 30'5" x 14'2" (9.29m x 4.33m )
<b>BEDROOM ONE</b> 15'9" x 14'11" (4.82m x 4.55m)	<b>ENSUITE</b>
<b>DRESSING ROOM &amp; ENSUITE</b>	<b>CINEMA ROOM / BEDROOM NINE</b> 16'6" x 14'2" (5.04m x 4.33m)
<b>BEDROOM TWO</b> 13'5" x 10'6" (4.09m x 3.21m)	<b>TRIPLE GARAGE</b>
	<b>DRIVEWAY &amp; GARDENS</b>











Webbs Estate Agents - endeavour to maintain accurate depictions of properties in Virtual Tours, Floor Plans and descriptions, however, these are intended only as a guide and purchasers must satisfy themselves by personal inspection.

