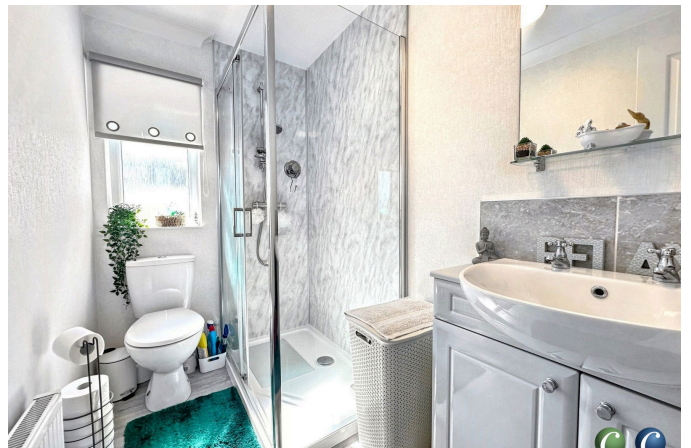


Lower Lodge, Armitage, WS15 4AX

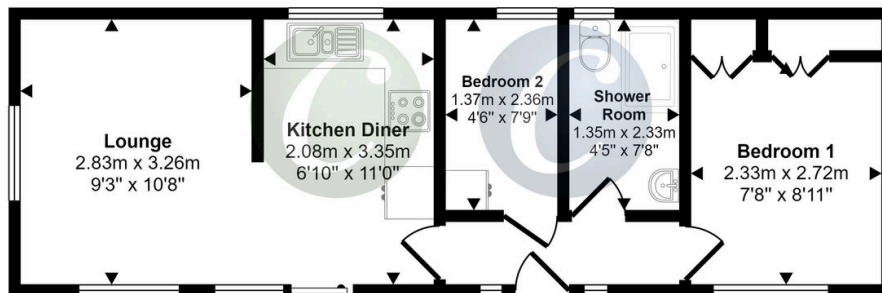
£150,000

🛏 2 🚿 1 🛋 1



- IMMACULATELY PRESENTED THROUGHOUT
- LOUNGE
- BATHROOM
- DRIVEWAY
- CLOSE TO AMENITIES
- TWO BEDROOMS
- KITCHEN
- GARDEN
- AMAZING FIELD VIEWS
- VIEWING ESSENTIAL

Approx Gross Internal Area
34 sq m / 370 sq ft



Floorplan

This floorplan is only for illustrative purposes and is not to scale. Measurements of rooms, doors, windows, and any items are approximate and no responsibility is taken for any error, omission or mis-statement. Icons of items such as bathroom suites are representations only and may not look like the real items. Made with Made Snappy 360.

**** ONLINE VIRTUAL TOUR AVAILABLE ON THIS PROPERTY - why not take a peek before booking a viewing****