




Armishaw Place, Brereton, Rugeley, WS15 1HP

Offers In Region Of £329,950

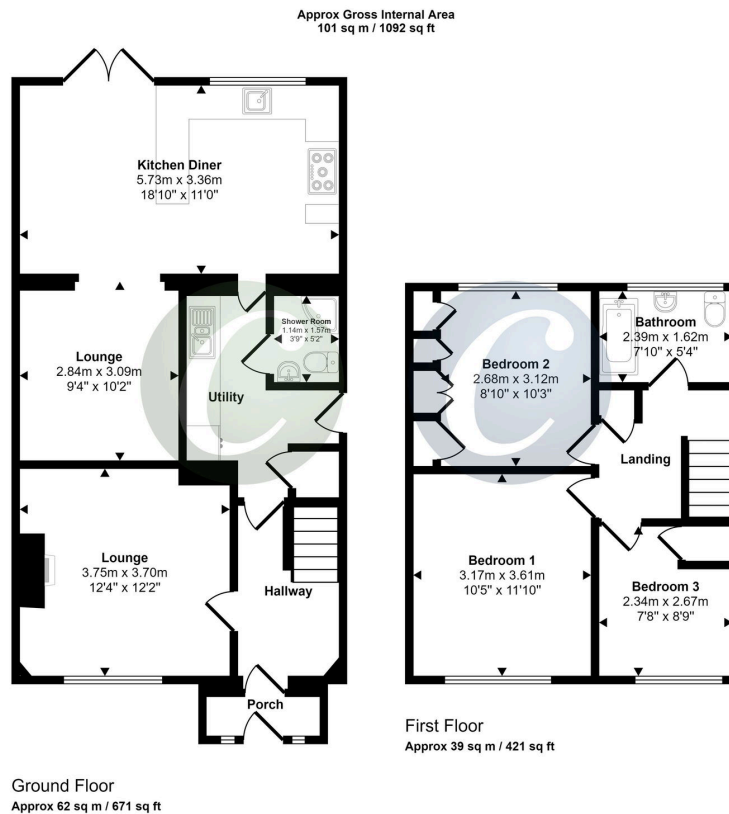
 3  2  2



**** ONLINE VIRTUAL TOUR AVAILABLE ON THIS PROPERTY - why not take a peek before booking a viewing****

Key Features

- BEAUTIFULLY PRESENTED THROUGHOUT
- EXTENDED FAMILY HOME
- SNUG
- THREE BEDROOMS
- DETACHED SINGLE GARAGE
- SOUGHT AFTER LOCATION
- OPEN PLAN KITCHEN DINER
- DOWNSTAIRS SHOWER ROOM
- LARGE GARDEN
- VIEWING ESSENTIAL



This floorplan is only for illustrative purposes and is not to scale. Measurements of rooms, doors, windows, and any items are approximate and no responsibility is taken for any error, omission or mis-statement. Icons of items such as bathroom suites are representations only and may not look like the real items. Made with Made Snappy 360.