

## Hawkesmore Drive, Little Haywood, Stafford, ST18 0UA

£340,000

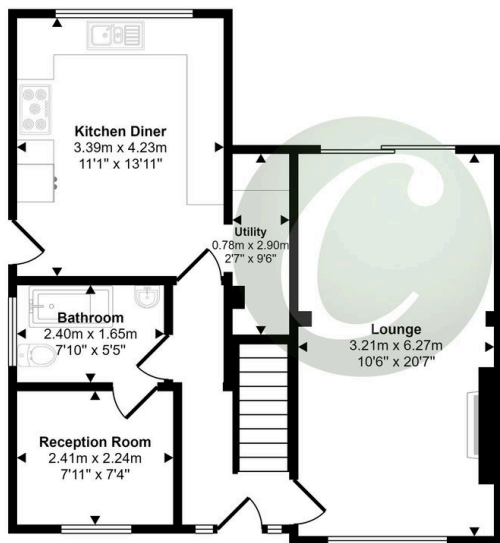
3 2 2






- DETACHED FAMILY HOME
- THREE/ FOUR BEDROOMS
- DOWNSTAIRS BATHROOM
- SOUGHT AFTER VILLAGE LOCATION
- LOUNGE DINER
- VIEWING ESSENTIAL
- 
- 

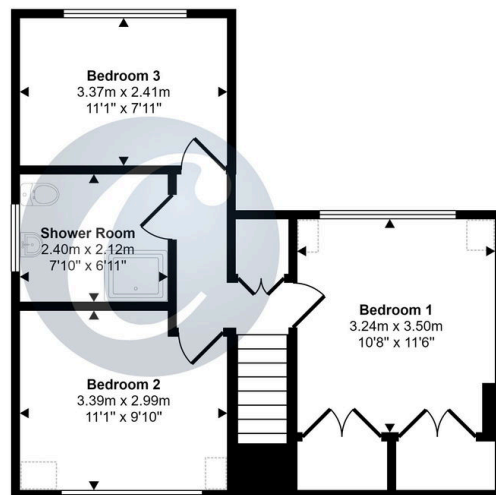
Approx Gross Internal Area  
101 sq m / 1088 sq ft



Ground Floor  
Approx 55 sq m / 594 sq ft

 Denotes head height below 1.5m

This floorplan is only for illustrative purposes and is not to scale. Measurements of rooms, doors, windows, and any items are approximate and no responsibility is taken for any error, omission or mis-statement. Icons of items such as bathroom suites are representations only and may not look like the real items. Made with Made Snappy 360.



First Floor  
Approx 46 sq m / 494 sq ft

**\*\* ONLINE VIRTUAL TOUR AVAILABLE ON THIS PROPERTY - why not take a peek before booking a viewing\*\***