

Keystone Lane, Rugeley, WS15 2EF

£189,950

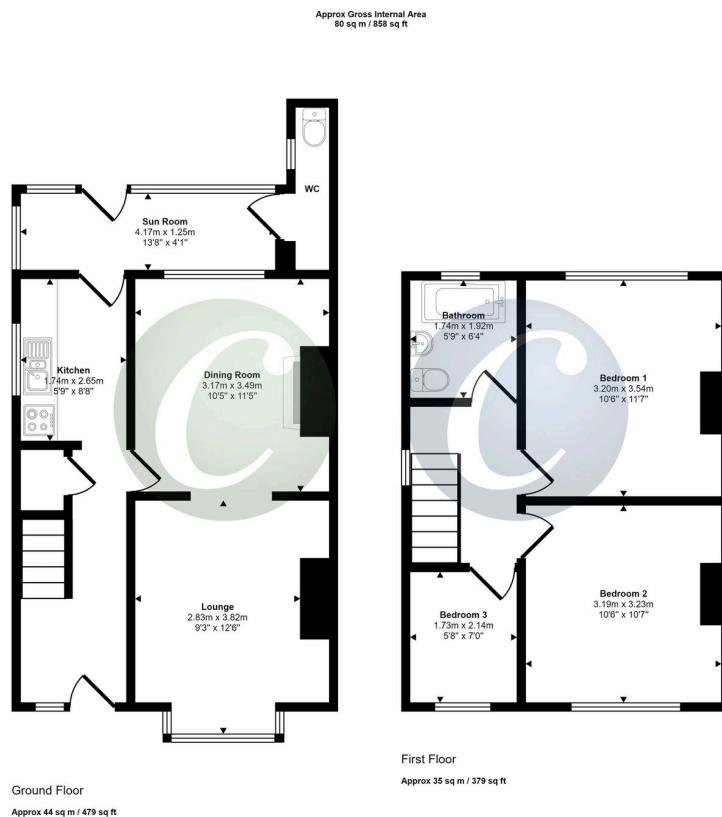
3 1 2



**** ONLINE VIRTUAL TOUR AVAILABLE ON THIS PROPERTY - why not take a peek before booking a viewing****

Key Features

- NO UPWARD CHAIN
- TOWN CENTRE LOCATION
- THREE BEDROOMS
- TWO RECEPTION ROOMS
- DOWNSTAIRS CLOAKROOM
- REAR GARDEN
- GOOD SIZE PLOT
- VIEWING ADVISED
-
-



This floorplan is only for illustrative purposes and is not to scale. Measurements of rooms, doors, windows, and any items are approximate and no responsibility is taken for any error, omission or mis-statement. Icons of items such as bathroom suites are representations only and may not look like the real items. Made with Made Snappy 360.