


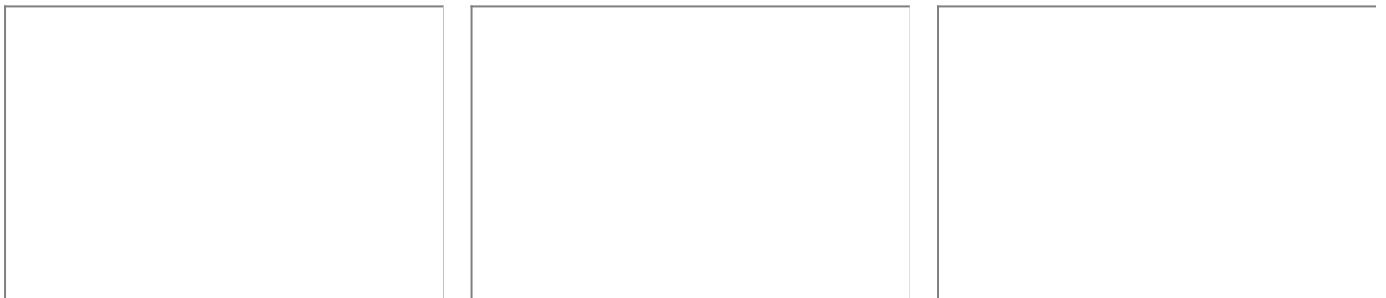


## Wolseley Road, Rugeley, WS15 2GJ

£130,000

 2  2  1

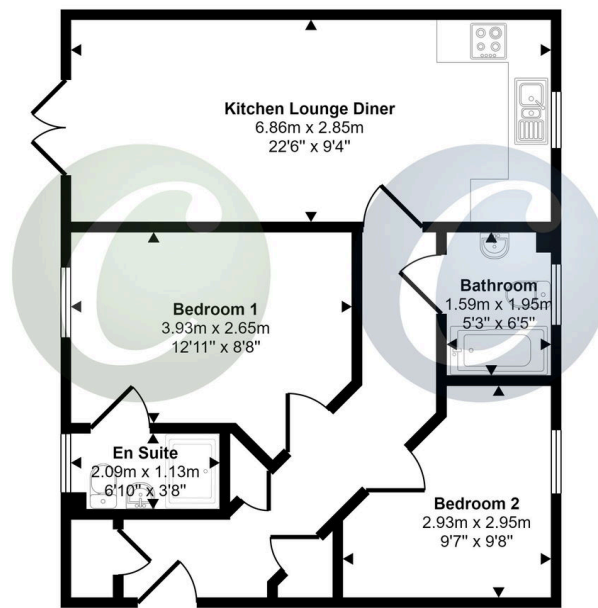


Offered with NO UPWARD CHAIN, this two-bed roomed first floor apartment is located within the popular Howell Mews development. Boasting contemporary design and convenient amenities, this residence offers comfortable living spaces ideal for modern lifestyles.

## Key Features

- NO UPWARD CHAIN
- ENSUITE
- ALLOCATED PARKING
- VIEWING ADVISED
- 
- TWO DOUBLE BEDROOMS
- OPEN PLAN LOUNGE KITCHEN DINER
- CLOSE TO AMENITIES
- 
- 

Approx Gross Internal Area  
55 sq m / 594 sq ft



Floorplan

This floorplan is only for illustrative purposes and is not to scale. Measurements of rooms, doors, windows, and any items are approximate and no responsibility is taken for any error, omission or mis-statement. Icons of items such as bathroom suites are representations only and may not look like the real items. Made with Made Snappy 360.