

St. Michaels Road, Brereton, Rugeley, WS15 1EX

£210,000

3 1 1

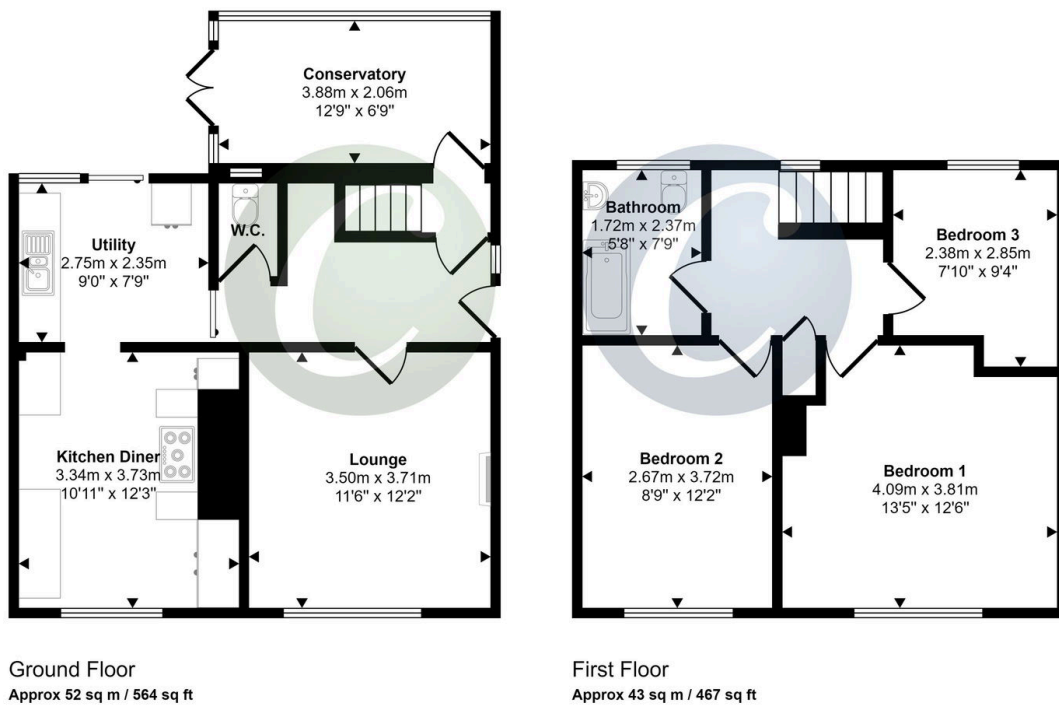


**** ONLINE VIRTUAL TOUR AVAILABLE ON THIS PROPERTY - why not take a peek before booking a viewing****

Key Features

- WELL PRESENTED THROUGHOUT
- EXSTENSIVE PARKING
- THREE BEDROOMS
- KITCHEN DINER
- LOUNGE
- CONSERVATORY
- DOWNSTAIRS CLOAKROOM
- REAR GARDEN
- POPULAR RESIDENTIAL LOCATION
- VIEWING ADVISED

Approx Gross Internal Area
96 sq m / 1030 sq ft



This floorplan is only for illustrative purposes and is not to scale. Measurements of rooms, doors, windows, and any items are approximate and no responsibility is taken for any error, omission or mis-statement. Icons of items such as bathroom suites are representations only and may not look like the real items. Made with Made Snappy 360.