




Elizabethan Way, Rugeley, WS15 2EE

£310,000

 4  2  1

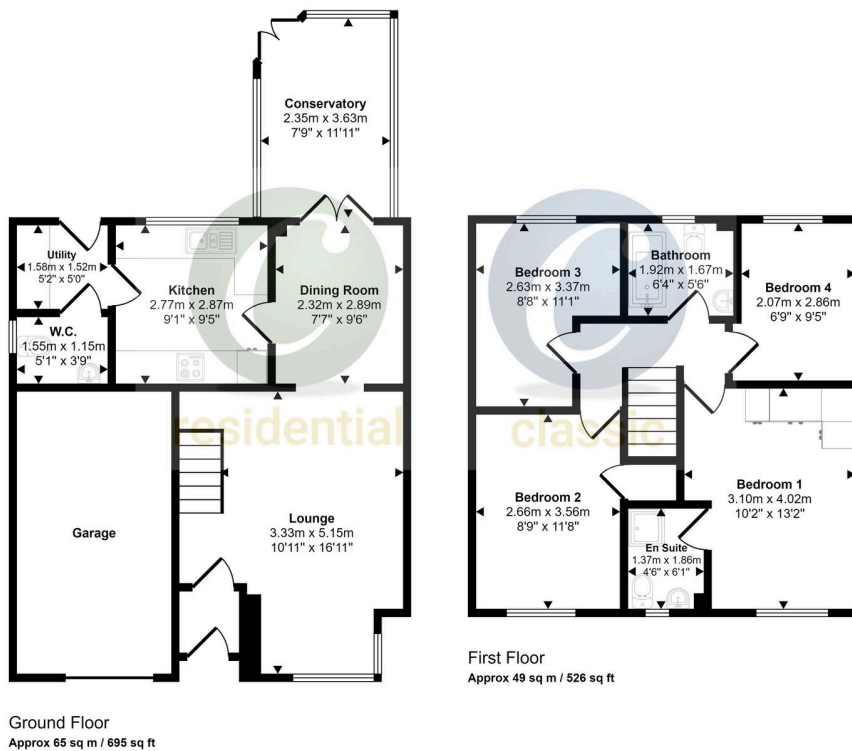


ONLINE VIRTUAL 360 TOUR AVAILABLE ON THIS PROPERTY - why not take a peek before booking a viewing please click on the link

Key Features

- OPEN DAY ON SATURDAY 20TH JULY
JOIN SUE BETWEEN 12PM - 1PM -
CONTACT OUR TEAM TO REGISTER
- DETACHED FAMILY HOME
- CONSERVATORY
- POPULAR RESIDENTIAL LOCATION
- CLOSE TO CANNOCK CHASE
- FOUR BEDROOMS
- VIEWING ESSENTIAL

Approx Gross Internal Area
113 sq m / 1221 sq ft



This floorplan is only for illustrative purposes and is not to scale. Measurements of rooms, doors, windows, and any items are approximate and no responsibility is taken for any error, omission or mis-statement. Icons of items such as bathroom suites are representations only and may not look like the real items. Made with Made Snappy 360.