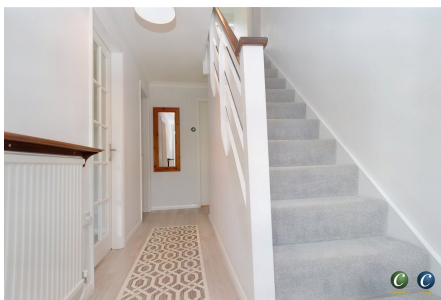


Moor Croft, Colton, Rugeley, Staffordshire, WS15 3ND

£425,000

4 1 3

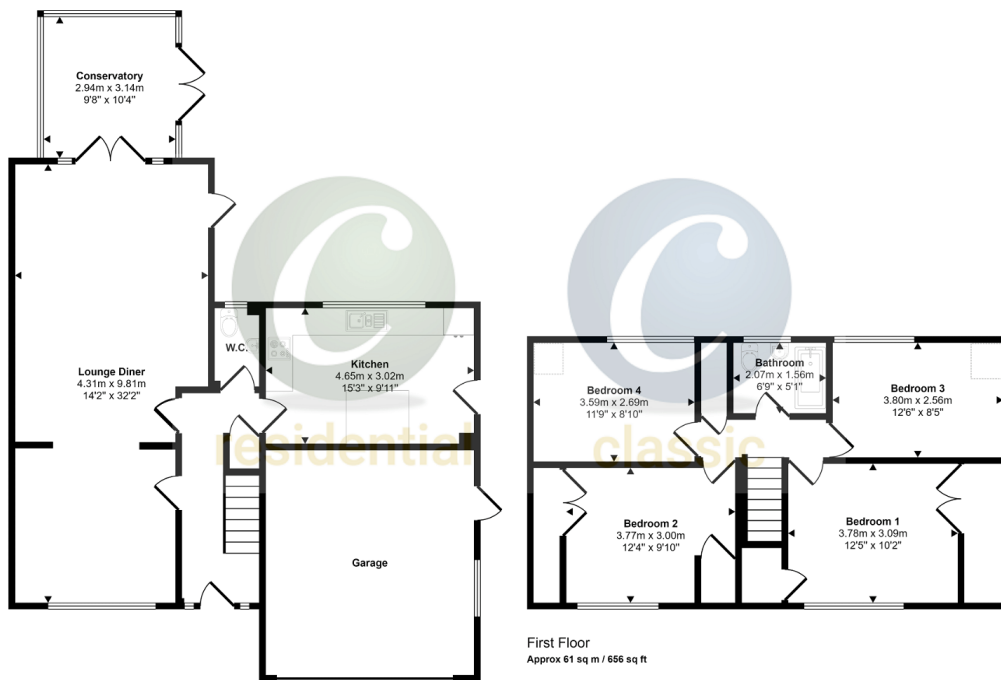


**** ONLINE VIRTUAL TOUR AVAILABLE ON THIS PROPERTY - why not take a peek before booking a viewing**** Classic Collection at C residential are pleased to market this spacious Family Home in the popular village of Colton. UPVC double-glazed and Gas centrally heated. Entrance Hall, Guest Cloakroom, Lounge/Dining Room, Conservatory, Breakfast Kitchen. First Floor Landing with Four Bedrooms and Bathroom. INTEGRAL DOUBLE GARAGE. Gardens to front and rear. EPC rating D

Key Features

- SOUGHT AFTER VILLAGE LOCATION
- UPVC DOUBLE-GLAZED
- LANDSCAPED GARDEN TO REAR
- MOTIVATED SELLER - ONWARD PURCHASE FOUND
- LARGE FAMILY HOME
- GAS CENTRALLY HEATED

Approx Gross Internal Area
160 sq m / 1726 sq ft



Ground Floor
Approx 99 sq m / 1070 sq ft

Denotes head height below 1.5m

This floorplan is only for illustrative purposes and is not to scale. Measurements of rooms, doors, windows, and any items are approximate and no responsibility is taken for any error, omission or mis-statement. Icons of items such as bathroom suites are representations only and may not look like the real items. Made with Made Snappy 360.