

Wolseley Road, Rugeley, WS15 2QJ

£450,000

3 1 2

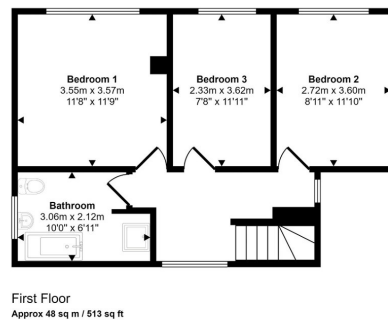
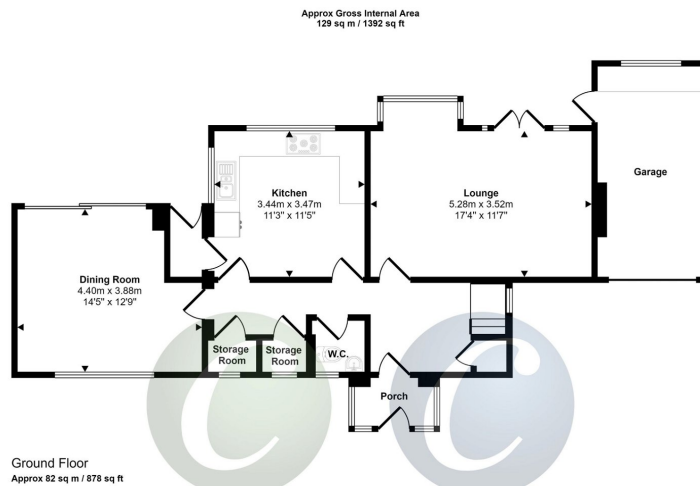


Tomorrow, 8th June, Ang is getting everything ready to welcome you to this lovely family home!

Wolseley Road, Rugeley
2:00 PM - 4:00 PM
£450,000

Key Features

- NO UPWARD CHAIN
- IDEAL TOWN CENTRE LOCATION
- MATURE GARDENS TO FRONT AND REAR
- A PERFECT OPPORTUNITY FOR UPGRADE AND RENOVATION
-
-
-



This floorplan is only for illustrative purposes and is not to scale. Measurements of rooms, doors, windows, and any items are approximate and no responsibility is taken for any error, omission or mis-statement. Icons of items such as bathroom suites are representations only and may not look like the real items. Made with Made Snappy 360.