

# Old Road, Handsacre, Rugeley, WS15 4DR

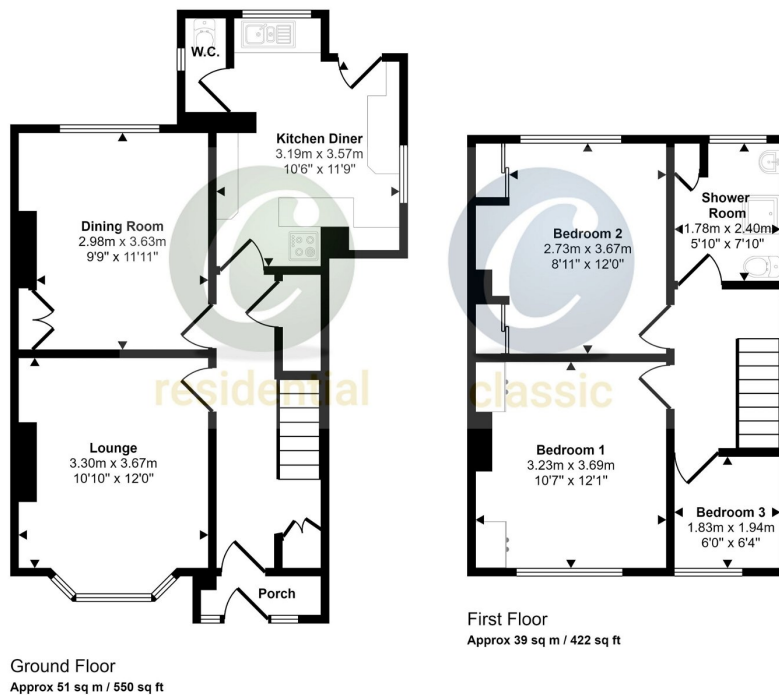
Offers In Region Of £295,000

 3  1  2



- NO UPWARD CHAIN
- POPULAR LOCATION
- CLOSE TO LOCAL AMENITIES
- GAS CENTRALLY HEATED
- 
- 
- 
- 

Approx Gross Internal Area  
90 sq m / 973 sq ft



This floorplan is only for illustrative purposes and is not to scale. Measurements of rooms, doors, windows, and any items are approximate and no responsibility is taken for any error, omission or mis-statement. Icons of items such as bathroom suites are representations only and may not look like the real items. Made with Made Snappy 360.

**\*\* ONLINE VIRTUAL TOUR AVAILABLE ON THIS PROPERTY - why not take a peek before booking a viewing\*\***