



Connells

Holly Park Drive
Plymouth

Holly Park Drive
Plymouth PL5 4JU

for sale offers in excess of
£220,000



Property Description

This charming three-bedroom home offers breathtaking countryside views, thoughtfully designed to make the most of its surroundings. A spacious layout provides versatile living spaces across three floors and there is a garage to the front of the property. The rear garden has been landscaped in order to enjoy the stunning views.

Ground Floor

Hallway

Large storage cupboard. Stairs rising to the first floor.

Lounge

10' 4" x 13' 5" (3.15m x 4.09m)

Double glazed window to the front elevation enjoying widespread views. Radiator.

W.C.

Low level w.c. and a wash hand basin. Double glazed window to the front elevation.

First Floor

uPVC door to the side elevation. Storage cupboard.

Bedroom 1

10' 8" x 10' 9" (3.25m x 3.28m)

Double glazed window to the front elevation. Built in storage. Radiator.

Dining Room

10' 3" max x 12' 7" max (3.12m max x 3.84m max)

Double glazed window to the rear elevation. Radiator. uPVC door to the rear elevation.

Kitchen

8' 1" x 9' 4" (2.46m x 2.84m)

A range of wall and base units with worktops above. Integrated oven with counter top gas hob. Wall mounted boiler. Stainless steel sink and drainer with mixer tap. Plumbing for a washing machine. Double glazed window to the rear elevation.

Shower Room

Walk in shower enclosure with electric shower, low level w.c. and a pedestal sink unit. Obscured double glazed window to the front elevation.

Second Floor

Bedroom 2

10' 8" max x 12' 2" max (3.25m max x 3.71m max)

Double glazed window to the rear elevation. Radiator.

Bedroom 3

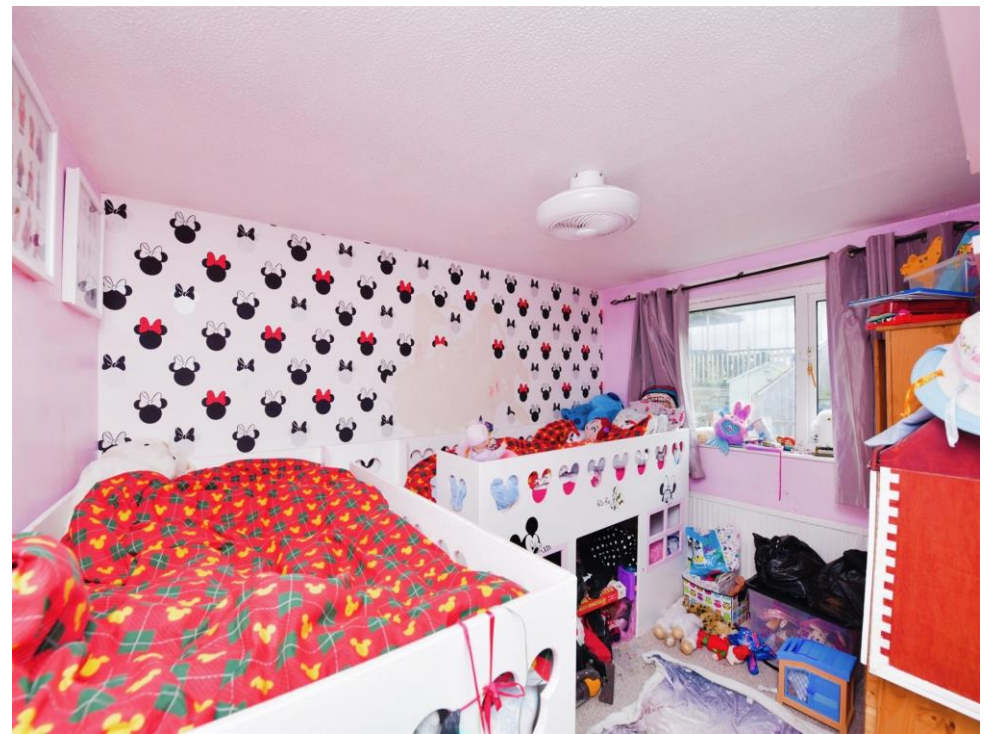
7' 6" x 8' 5" (2.29m x 2.57m)

Double glazed window to the rear elevation.
Radiator.

Outside

The property benefits from a garage to the front providing extra storage space. There is a side access gate to the rear garden. The garden is landscaped into sections including a raised decking area and lawned area.









This floor plan is for illustrative purposes only. It is not drawn to scale. Any measurements, floor areas (including any total floor area), openings and orientation are approximate. No details are guaranteed, they cannot be relied upon for any purpose and they do not form part of any agreement. No liability is taken for any error, omission or misstatement. A party must rely upon its own inspection(s). Powered by www.focalagent.com

To view this property please contact Connells on

T 01752 351616
E stbudeaux@connells.co.uk

15 Victoria Road St Budeaux
 PLYMOUTH PL5 1RW

EPC Rating: E

Tenure: Freehold

view this property online connells.co.uk/Property/SBU108751



1. MONEY LAUNDERING REGULATIONS Intending purchasers will be asked to produce identification documentation at a later stage and we would ask for your co-operation in order that there will be no delay in agreeing the sale. 2. These particulars do not constitute part or all of an offer or contract. 3. The measurements indicated are supplied for guidance only and as such must be considered incorrect. Potential buyers are advised to recheck measurements before committing to any expense. 4. We have not tested any apparatus, equipment, fixtures, fittings or services and it is in the buyers interest to check the working condition of any appliances.

Connells Residential is registered in England and Wales under company number 1489613, Registered Office is Cumbria House, 16-20 Hockliffe Street, Leighton Buzzard, Bedfordshire, LU7 1GN. VAT Registration Number is 500 2481 05.

See all our properties at www.connells.co.uk | www.rightmove.co.uk | www.zoopla.co.uk

Property Ref: SBU108751 - 0002