



Connells

Budshhead Road
Plymouth



Property Description

This charming three bedroom semi-detached house is located on Budshead Road in the bustling city of Plymouth. With a prime elevated position, this property boasts plenty of natural light and a spacious layout. The ground floor features a welcoming entrance hall, leading to a cosy living room with fireplace. The added bonus of a utility room makes this home perfect for families. Upstairs, there are three generously-sized bedrooms, each with large windows allowing for plenty of natural light. The two double bedrooms also boast built-in wardrobes for extra storage. This property also benefits from a sizable garden, perfect for outdoor entertaining and relaxation. With the added advantage of no onward chain, this is an ideal opportunity for those looking for a hassle-free move. Don't miss the chance to make this beautiful house your forever home.

Entrance Porch

Double glazed windows to the front and side elevations. Door into the entrance hall.

Entrance Hall

Stairs rising to the first floor with storage beneath. Radiator.

Lounge

12' 7" x 13' 3" (3.84m x 4.04m)
Double glazed window to the front elevation. Feature fireplace with stone surround and shelving. Radiator.

Dining Room

8' 11" x 10' 2" (2.72m x 3.10m)
Double glazed window to the rear elevation. Radiator.

Kitchen

10' 2" x 9' 6" (3.10m x 2.90m)
The kitchen comprises of a range of wall and base units with worktops above. Stainless steel sink and drainer with mixer tap. Cooker point. Wall mounted extractor hood. Space for a fridge freezer. Double glazed window to the rear elevation. Wall mounted boiler. Door to utility.

Utility / W.C.

11' 9" x 4' 6" (3.58m x 1.37m)
Space for washing machine and tumble dryer. Door to w.c.

Upstairs Landing

Double glazed window to the side elevation.

Bedroom 1

11' 3" x 11' 11" (3.43m x 3.63m)
Double glazed window to the rear elevation. Radiator. Built in wardrobe.

Bedroom 2

9' 5" x 11' 7" (2.87m x 3.53m)
Double glazed window to the front elevation. Built in wardrobes. Radiator.

Bedroom 3

8' 3" x 8' 4" (2.51m x 2.54m)

Double glazed window to the front elevation.
Radiator.

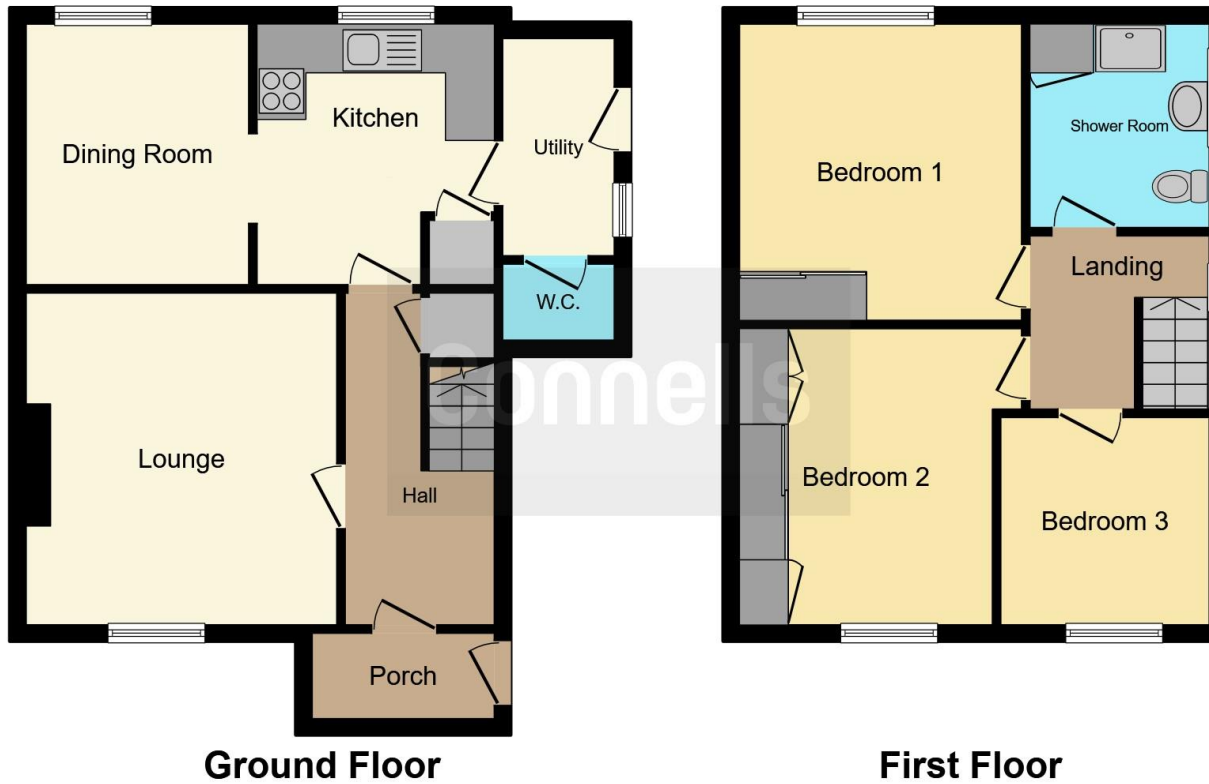
Shower Room

Walk in shower enclosure with electric shower, pedestal sink and low level w.c.
Storage cupboard. Radiator. Obscured double glazed window to the side elevation.









This floor plan is for illustrative purposes only. It is not drawn to scale. Any measurements, floor areas (including any total floor area), openings and orientation are approximate. No details are guaranteed, they cannot be relied upon for any purpose and they do not form part of any agreement. No liability is taken for any error, omission or misstatement. A party must rely upon its own inspection(s). Powered by www.focalagent.com

To view this property please contact Connells on

T 01752 351616
E stbudeaux@connells.co.uk

15 Victoria Road St Budeaux
 PLYMOUTH PL5 1RW

EPC Rating: Awaited

Tenure: Freehold

view this property online connells.co.uk/Property/SBU108415



1. MONEY LAUNDERING REGULATIONS Intending purchasers will be asked to produce identification documentation at a later stage and we would ask for your co-operation in order that there will be no delay in agreeing the sale. 2. These particulars do not constitute part or all of an offer or contract. 3. The measurements indicated are supplied for guidance only and as such must be considered incorrect. Potential buyers are advised to recheck measurements before committing to any expense. 4. We have not tested any apparatus, equipment, fixtures, fittings or services and it is in the buyers interest to check the working condition of any appliances.

Connells Residential is registered in England and Wales under company number 1489613, Registered Office is Cumbria House, 16-20 Hockliffe Street, Leighton Buzzard, Bedfordshire, LU7 1GN. VAT Registration Number is 500 2481 05.

See all our properties at www.connells.co.uk | www.rightmove.co.uk | www.zoopla.co.uk

Property Ref: SBU108415 - 0002