



**Flat 7, 12 The Crescent, Plymouth**  
**£185,000 Share of the Freehold**





## 12 The Crescent, Plymouth

Stylish 2-bed apartment in iconic Grade II Listed building. Modern kitchen, en-suite, city centre location, period features, allocated parking.

Close to Hoe Promenade.

Council Tax band: A

Tenure: Share of Freehold

Service Charge: £2200.00 per annum

- En Suite Shower Room
- Allocated Parking Space
- Carpeting to Living Area and Bedrooms
- Two Double Bedrooms
- Lift Access
- Sash Windows
- Living/Dinning Room
- Separate Fitted Kitchen





## 12 The Crescent, Plymouth

Communal door leads into 12 The Crescent with lift and stairs leading up to second floor. Wooden panelled front door into entrance hall with doors leading through to: living/dinning room. Separate kitchen fitted with high gloss wall and base units, Silestone work surfaces, induction hob, fan oven, dishwasher and fridge/freezer. Guest cloakroom. Stairs leading up to landing with cupboard housing washer/dryer. Doors leading to: Double bedroom with en-suite shower room, Occasional bedroom/study and further shower room. The apartment also benefits from one allocated parking space.

12 The Crescent has been converted stylishly into eight one bedroom apartments to offer modern city living with the benefit of period features. The Crescent is one of Plymouth's iconic Grade II Listed buildings and is superbly situated within walking distance of The Hoe Promenade as well as the city centre.

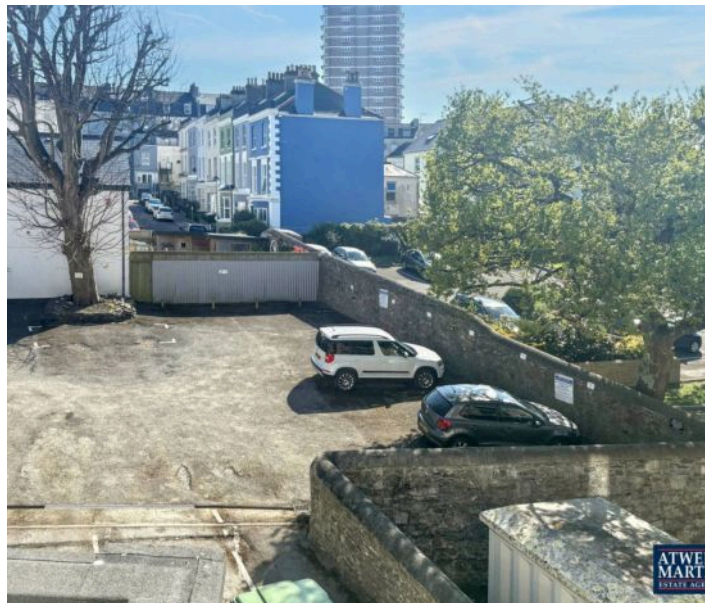
- En Suite Shower Room
- Allocated Parking Space
- Carpeting to Living Area and Bedrooms
- Two Double Bedrooms
- Lift Access
- Sash Windows
- Living/Dinning Room
- Separate Fitted Kitchen





## ACCOMMODATION

Communal door leads into 12 The Crescent with lift and stairs leading up to second floor. Wooden panelled front door into entrance hall with doors leading through to: living/dinning room. Separate kitchen fitted with high gloss wall and base units, Silestone work surfaces, induction hob, fan oven, dishwasher and fridge/freezer. Guest cloakroom. Stairs leading up to landing with cupboard housing washer/dryer. Doors leading to: Double bedroom with en suite shower room, Occasional bedroom/study and further shower room. The apartment also benefits from one allocated parking space.



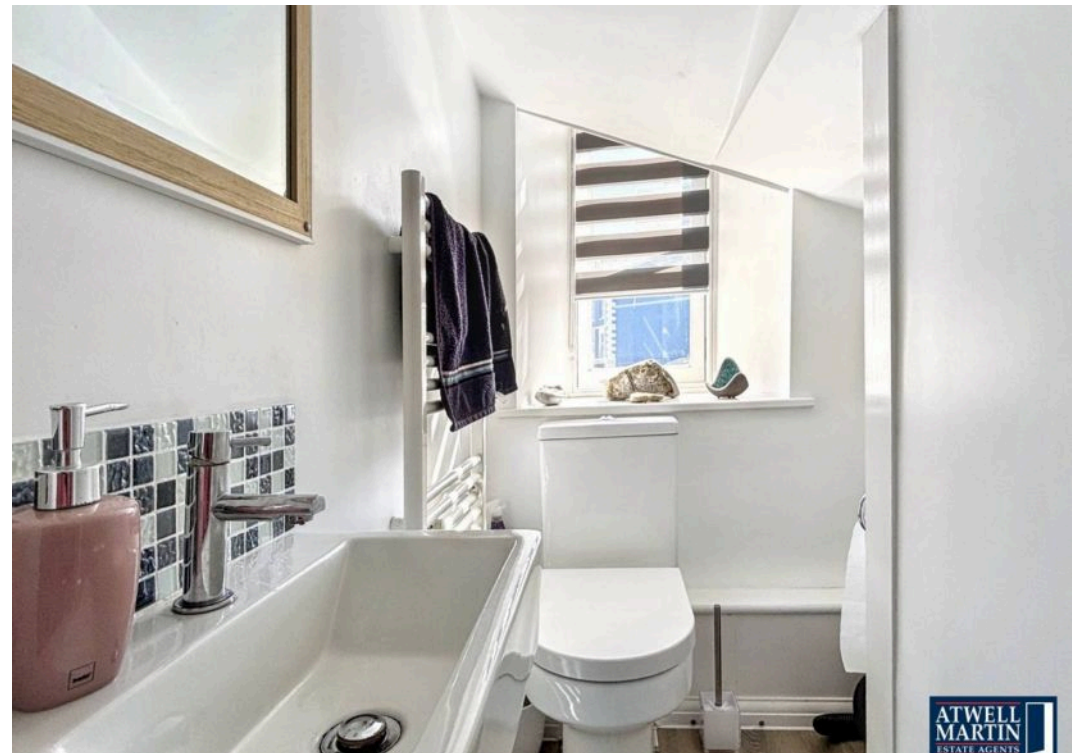




ATWELL  
MARTIN  
ESTATE AGENTS



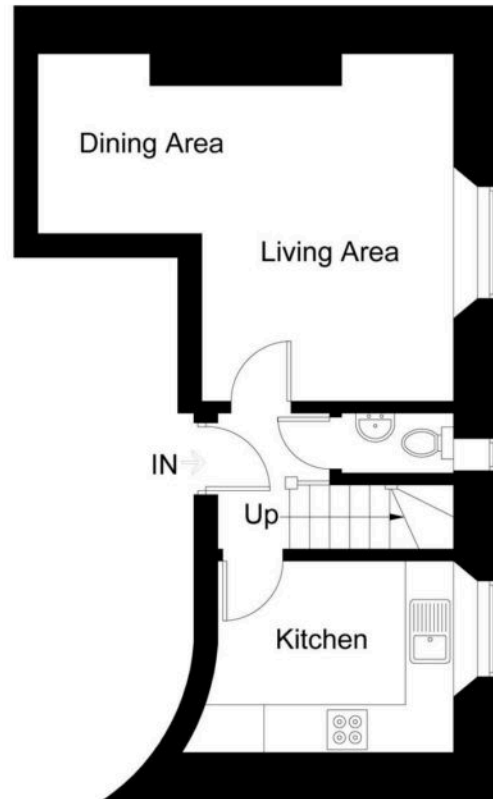
ATWELL  
MARTIN  
ESTATE AGENTS



ATWELL  
MARTIN  
ESTATE AGENTS

## Flat 7, 12 The Crescent

Approximate Gross Internal Area = 63.3 sq m / 681 sq ft

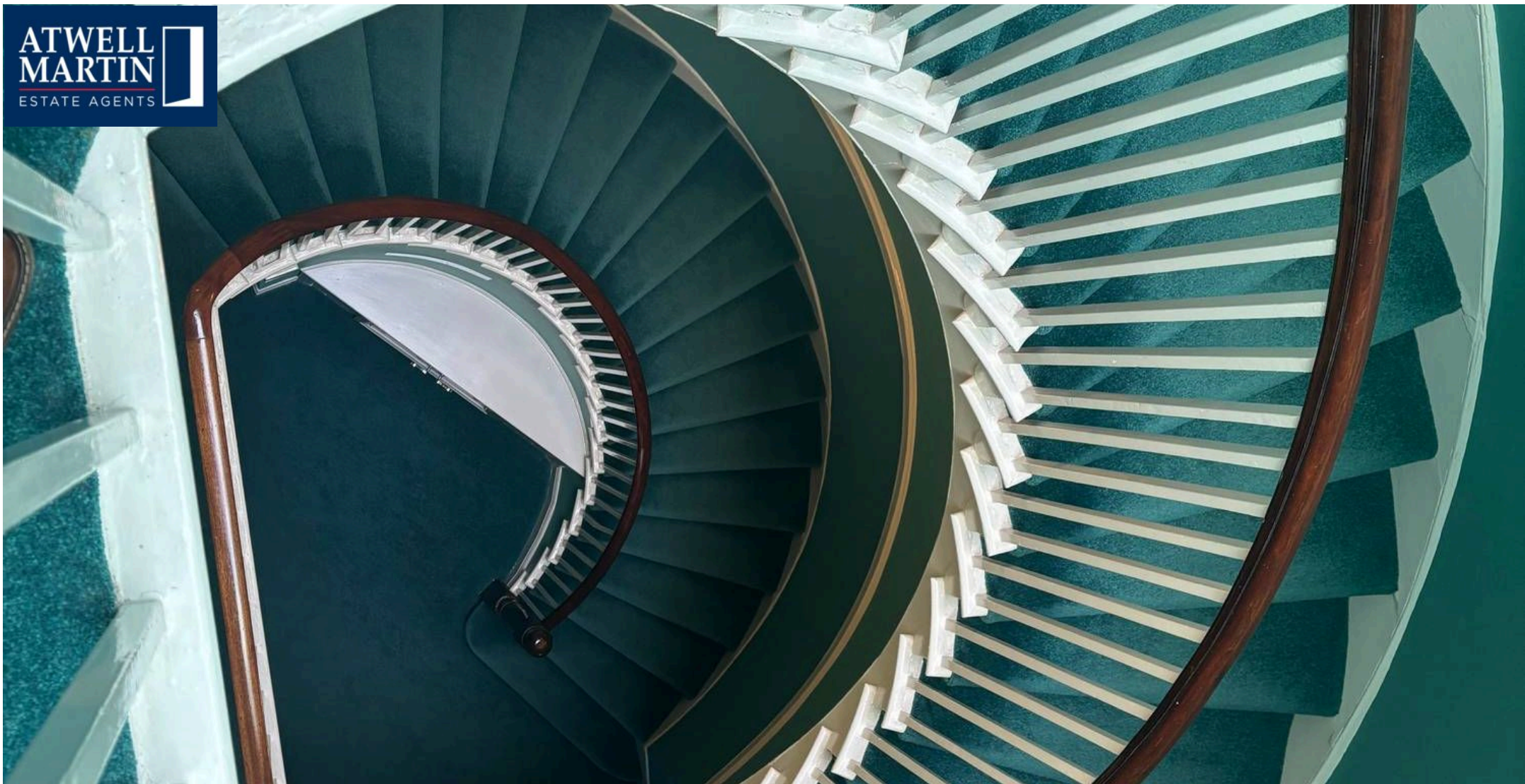


**Proposed Second Floor**



**Proposed Third Floor**





## Atwell Martin

Atwell Martin, 65 Southside Street – PL1 2LA

01752 202121

[plymouthsales@atwell-martin.co.uk](mailto:plymouthsales@atwell-martin.co.uk)

[plymouth.atwellmartin.co.uk/](http://plymouth.atwellmartin.co.uk/)

Atwell Martin Plymouth endeavour to ensure the accuracy of property details produced and displayed. Please note that we have not tested any apparatus, equipment, fixtures, fittings or services and so cannot verify that they are connected, in working order or fit for purpose. It is imperative that the buyer of any property makes such checks, prior to purchase so as to satisfy themselves of the properties suitability for their purchase. .

