



9 Parsonage Way, Plymouth
£350,000

**ATWELL
MARTIN**
ESTATE AGENTS



9 Parsonage Way, Plymouth

Stunning waterfront 2-bed apartment with ensuite, balcony, south-facing views. Close to amenities, garage, parking. Ideal Plymouth location. Schedule a viewing today!

Council Tax band: E

Tenure: Leasehold

- Two Double Bedroom Waterfront Apartment
- South Facing Views of Mount Batten Pier and The Breakwater
- Master Ensuite with Built in Wardrobes
- Lounge Diner with Access to South Facing Balcony
- Secure Gated Parking
- Lift Access to the Third Floor
- Family Bathroom
- Large Garage and Store which is Accessed via an Electric Roller Door
- A short walk to Plymouth Aquarium and The Cobbled Streets of The Barbican



9 Parsonage Way, Plymouth

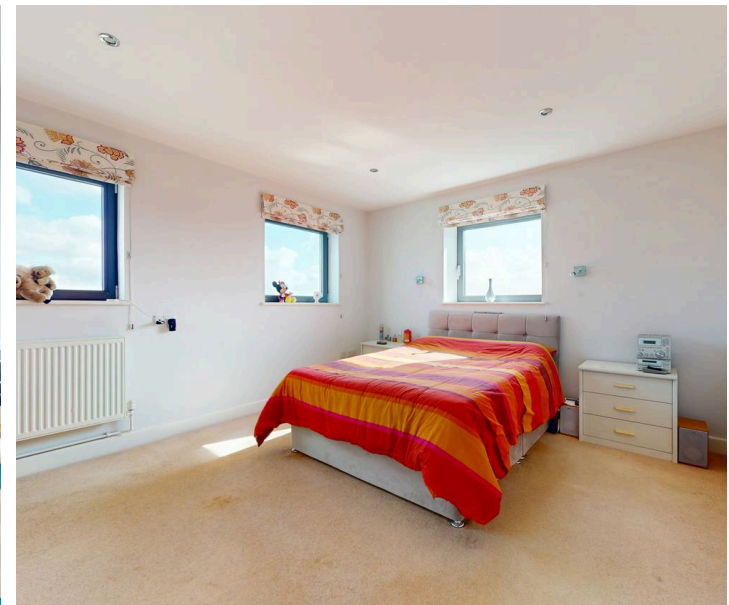
Nestled in a prime waterfront location, this stunning two-bedroom apartment offers a lifestyle of comfort.

Step inside this spacious abode to find two generously sized double bedrooms. The master bedroom boasts an ensuite bathroom and built-in wardrobes, providing a private sanctuary within this elegant space. South-facing views of Mount Batten Pier and The Breakwater greet you each morning, filling the rooms with natural light and a sense of tranquillity.

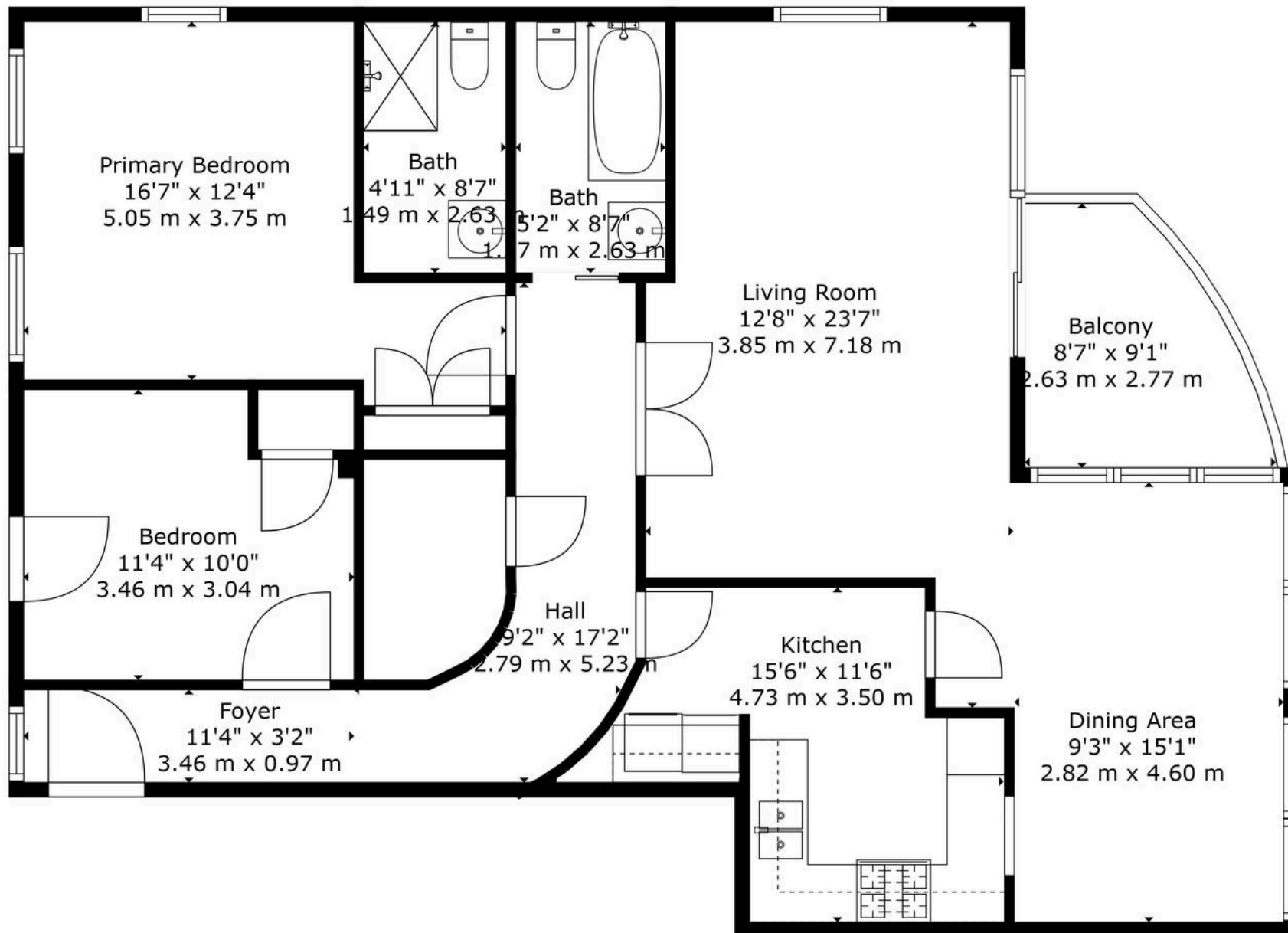
The heart of the home is the lounge diner, a perfect spot for relaxing or entertaining guests. Dual aspect doors lead out to the south-facing balcony, where you can enjoy al-fresco dining or simply soak in the breathtaking vistas.

Convenience is key in this apartment, with lift access to the third floor and secure gated parking ensuring ease of living. The family bathroom is elegantly appointed, offering a touch of sophistication to every-day routines.

Further enhancing the appeal of this property is the large garage and store, accessed via an electric roller door. Ample storage space and parking solutions make this residence both practical and stylish.









Atwell Martin

Atwell Martin, 65 Southside Street – PL1 2LA

01752 202121

plymouthsales@atwell-martin.co.uk

plymouth.atwellmartin.co.uk/

Atwell Martin Plymouth endeavour to ensure the accuracy of property details produced and displayed. Please note that we have not tested any apparatus, equipment, fixtures, fittings or services and so cannot verify that they are connected, in working order or fit for purpose. It is imperative that the buyer of any property makes such checks, prior to purchase so as to satisfy themselves of the properties suitability for their purchase. .

