



Discovery Wharf, Plymouth
£350,000



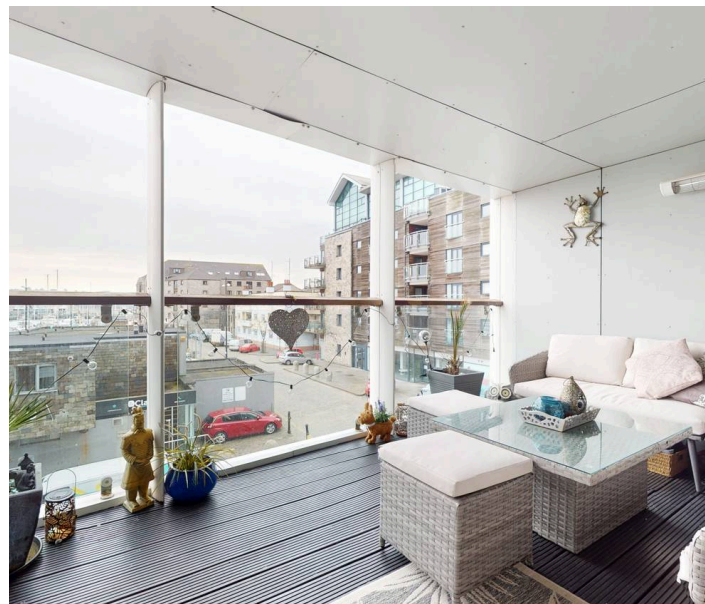
Discovery Wharf, Plymouth

Luxury waterside living in a 2-bed apartment with en-suite, open plan living, and stunning views of Sutton Harbour. Access to on-site leisure facilities and secure underground parking. Ideal for those seeking a vibrant lifestyle by the coast in Plymouth.

Council Tax band: E

Tenure: Leasehold

- Two double bedroom second floor apartment in this harbourside development
- offering views toward Sutton Harbour
- Conveniently located for ease of access to a wealth of local amenities, bars and restaurants
- Master En-suite
- Open Plan Kitchen and Lounge leading to a large enclosed balcony
- Residents have use of the extensive on site leisure facilities on offer which include a swimming pool with changing rooms, sauna, gymnasium, residents lounge, atrium and an attractive courtyard garden
- The property offers secure underground parking at grade
- Close by are the National Marine Aquarium, Plymouths historic Barbican, the world famous Hoe offering wonderful views over Plymouth Sound, one of the worlds great natural harbours



Discovery Wharf, Plymouth

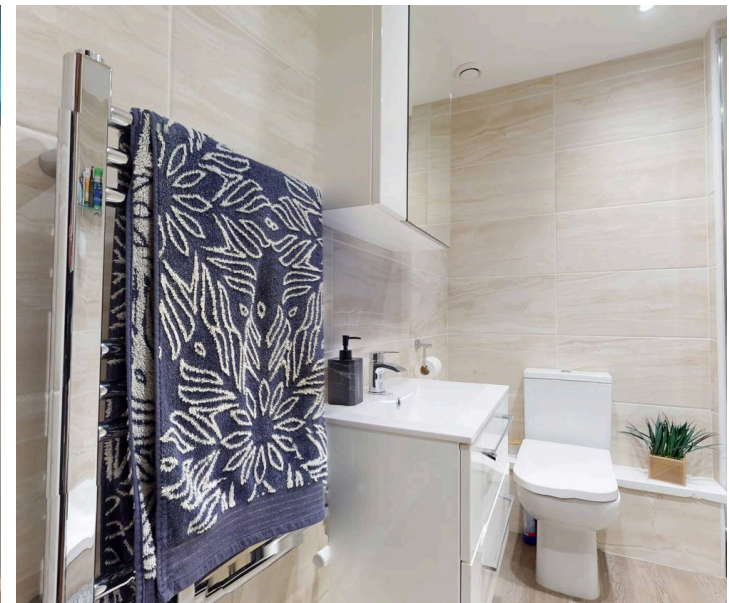
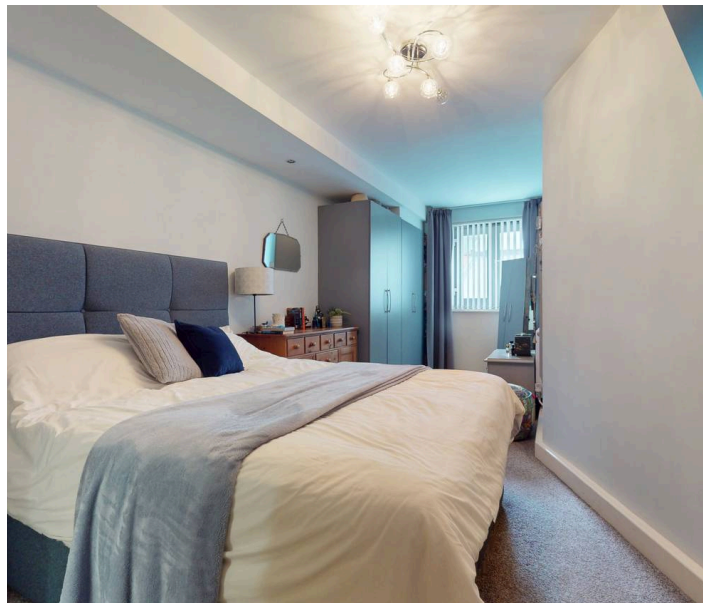
Step into luxury living in this exquisite waterside development with our stunning 2 bedroom apartment. Situated on the second floor, this residence boasts two double bedrooms, utility, two bathrooms and open plan living with views that stretch towards the picturesque Sutton Harbour. Conveniently located, it offers easy access to a plethora of local amenities, bars, and restaurants, ensuring a vibrant lifestyle at your doorstep.

As you step inside, you are greeted by a master ensuite bedroom, providing a private sanctuary within this urban oasis. The open plan kitchen and lounge create a seamless flow throughout, leading to a large enclosed balcony where you can unwind and soak in the stunning vistas.

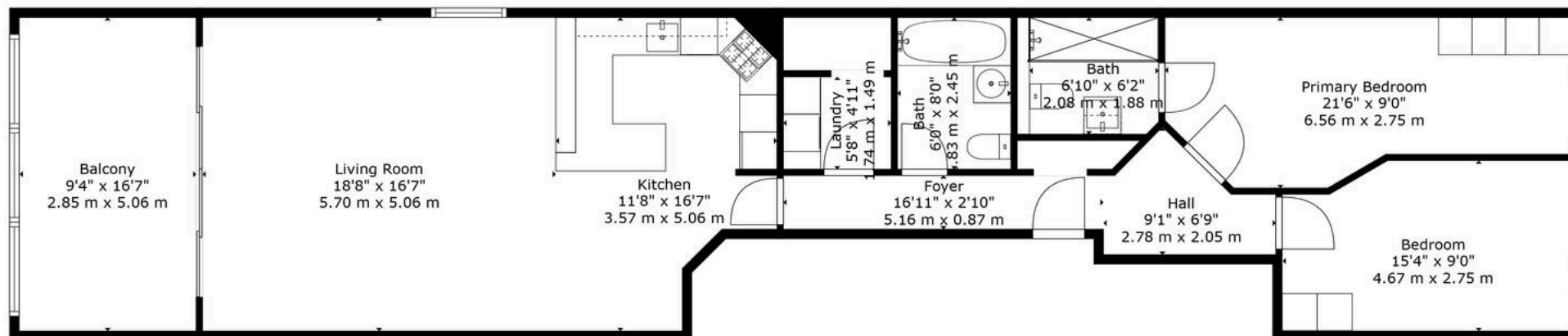
Residents of this prestigious development have access to a range of on-site leisure facilities, including a swimming pool with changing rooms, sauna, gymnasium, residents lounge, atrium, and an inviting courtyard garden. It's a haven for those seeking both relaxation and recreation right at home.

Parking is a breeze with secure underground parking at grade, offering peace of mind and convenience in the bustling city environment. Nearby attractions such as the National Marine Aquarium, Plymouth's historic Barbican, and the iconic Hoe with its panoramic views over Plymouth Sound, make this location a true gem for those who appreciate the charm of coastal living.

- Two double bedroom second floor apartment in this harbourside development
- offering views toward Sutton Harbour







TOTAL: 1054 sq. ft, 98 m2
 FLOOR 1: 1054 sq. ft, 98 m2
 EXCLUDED AREAS: BALCONY: 156 sq. ft, 14 m2

Floor Plan Created By Cubicasa App. Measurements Deemed Highly Reliable But Not Guaranteed.





Atwell Martin

Atwell Martin, 65 Southside Street – PL1 2LA

01752 202121

plymouthsales@atwell-martin.co.uk

plymouth.atwellmartin.co.uk/

Atwell Martin Plymouth endeavour to ensure the accuracy of property details produced and displayed. Please note that we have not tested any apparatus, equipment, fixtures, fittings or services and so cannot verify that they are connected, in working order or fit for purpose. It is imperative that the buyer of any property makes such checks, prior to purchase so as to satisfy themselves of the properties suitability for their purchase. .

